

# FLOOR PLAN

## DONCASTER GARDENS

142-146 Andersons Creek Road  
Doncaster East VIC 3109





## MASTER PLAN



# DONCASTER GARDENS

L	Living	F	Fridge	St	Storage
D	Dining	P	Pantry	LI	Linen
K	Kitchen	Pwd	Powder	B	Bed
R	Robe	S	Study	Ba	Bath
En	Ensuite	MB	Master Bed	Ld	Laundry
G.W	GAS & WATER meter	E	Electricity meter	FIP	Fire Indicator Panel

**DISCLAIMER:** These plans are intended as a guide only. Window size and location may vary. Refer to level plans for window locations. Refer to contract for options and chattels inclusions. The dimensions and areas are approximate only and may not accurately represent the actual dimensions and areas of the apartments or the spaces within them and are subject to change without notice. In addition, locations of utilities may vary during construction and fittings and fixtures on these plans are for illustrative purposes only. The areas are generally measured in accordance with the Property Council of Australia method of measurement. Prospective purchasers must rely on their own enquiries and should refer to the Contract of Sale and its schedules for all matters to be included in the purchase price of the apartment, including plans, finishes, fixtures, appliances and other particulars of sale. Loose furniture and planters are not included. Extent of floor finishes may vary. External space and landscaping indicative only. Refer to level plans for further information.



# DONCASTER GARDENS

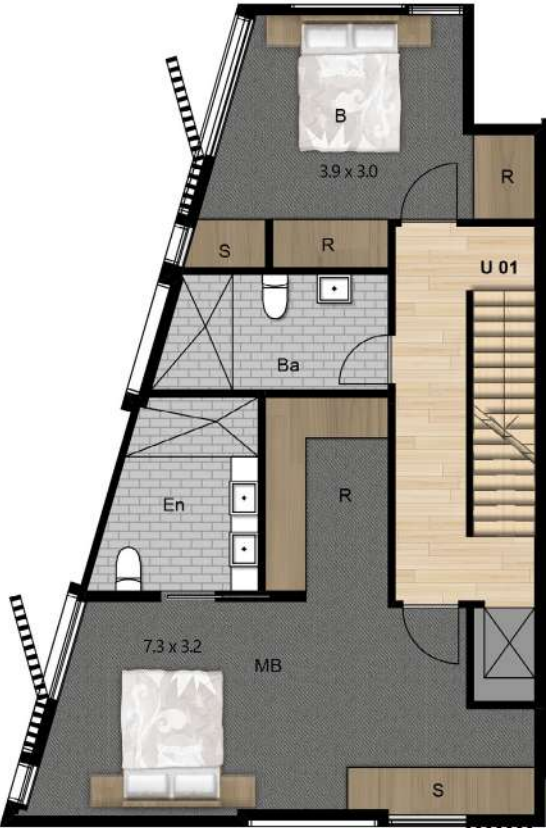
L	Living	F	Fridge	St	Storage
D	Dining	P	Pantry	LI	Linen
K	Kitchen	Pwd	Powder	B	Bed
R	Robe	S	Study	Ba	Bath
En	Ensuite	MB	Master Bed	Ld	Laundry
G.W	GAS & WATER meter	E	Electricity meter	FIP	Fire Indicator Panel

**DISCLAIMER:** These plans are intended as a guide only. Window size and location may vary. Refer to level plans for window locations. Refer to contract for options and chattels inclusions. The dimensions and areas are approximate only and may not accurately represent the actual dimensions and areas of the apartments or the spaces within them and are subject to change without notice. In addition, locations of utilities may vary during construction and fittings and fixtures on these plans are for illustrative purposes only. The areas are generally measured in accordance with the Property Council of Australia method of measurement. Prospective purchasers must rely on their own enquiries and should refer to the Contract of Sale and its schedules for all matters to be included in the purchase price of the apartment, including plans, finishes, fixtures, fittings, appliances and other particulars of sale. Loose furniture and planters are not included. Extent of floor finishes may vary. External space and landscaping indicative only. Refer to level plans for further information.





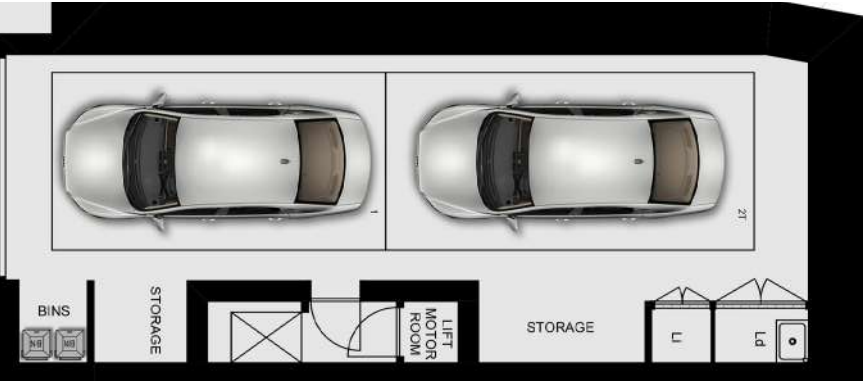
GROUND FLOOR



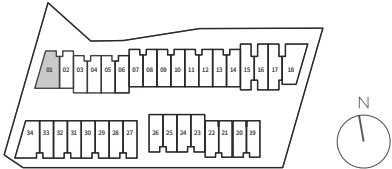
FIRST FLOOR



SECOND FLOOR



GARAGE



DONCASTER  
GARDENS

DWELLING  
01



5



3.5



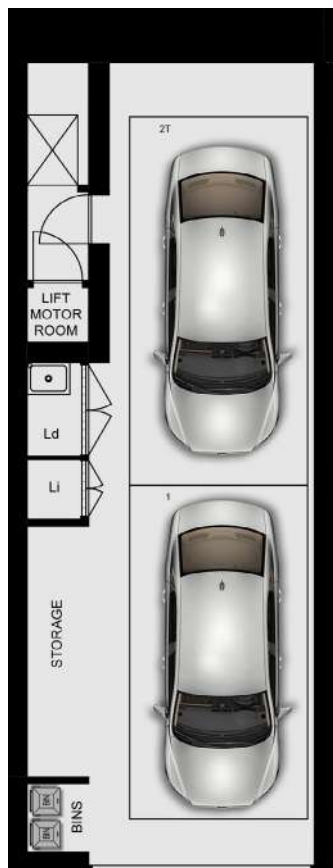
2

INTERNAL  
AREA  
277.0 m<sup>2</sup>  
29.82 SQ

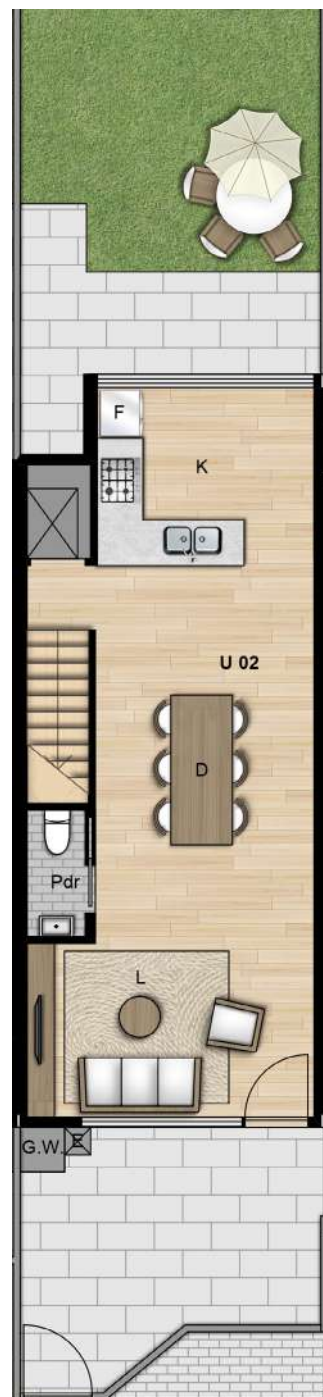
EXTERNAL  
AREA  
74.0 m<sup>2</sup>  
7.97 SQ

TOTAL  
AREA  
351.0 m<sup>2</sup>  
37.78 SQ

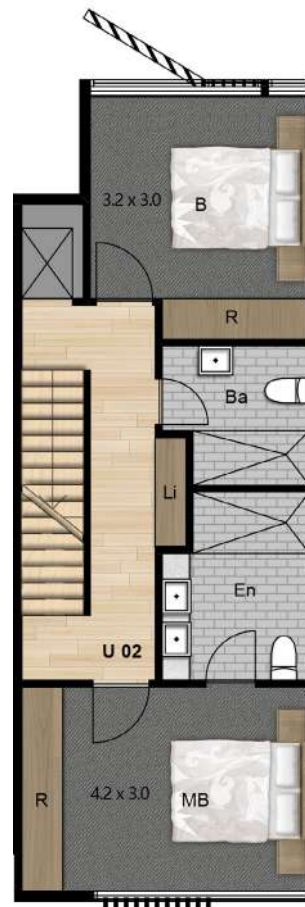
**DISCLAIMER:** These plans are intended as a guide only. Window size and location may vary. Refer to level plans for window locations. Refer to contract for options and chattels inclusions. The dimensions and areas are approximate only and may not accurately represent the actual dimensions and areas of the apartments or the spaces within them and are subject to change without notice. In addition, locations of utilities may vary during construction and fittings and fixtures on these plans are for illustrative purposes only. The areas are generally measured in accordance with the Property Council of Australia method of measurement. Prospective purchasers must rely on their own enquiries and should refer to the Contract of Sale and its schedules for all matters to be included in the purchase price of the apartment, including plans, finishes, fixtures, fittings, appliances and other particulars of sale. Loose furniture and planters are not included. Extent of floor finishes may vary. External space and landscaping indicative only. Refer to level plans for further information.



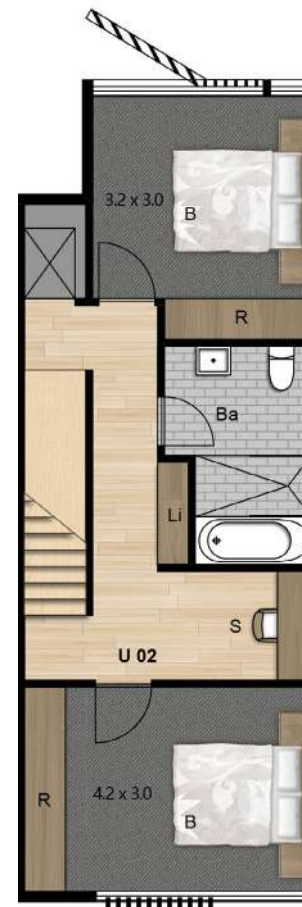
**GARAGE**



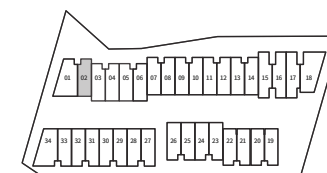
**GROUND FLOOR**



**FIRST FLOOR**



**SECOND FLOOR**



# DONCASTER GARDENS

DWELLING  
**02**



4



3.5



2

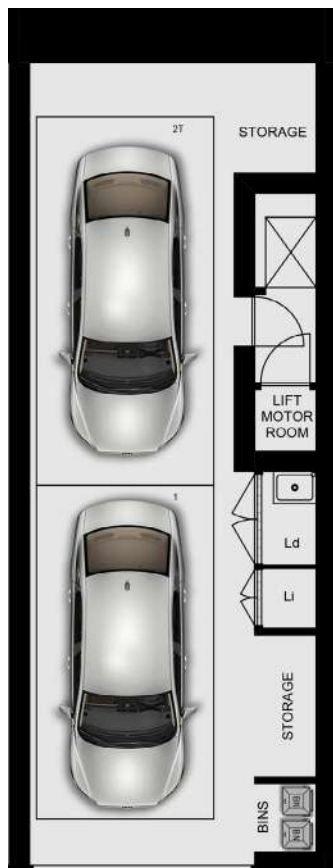
INTERNAL  
AREA  
209.0 m<sup>2</sup>  
22.50 SQ

EXTERNAL  
AREA  
47.0 m<sup>2</sup>  
5.06 SQ

TOTAL  
AREA  
256.0 m<sup>2</sup>  
27.56 SQ

**DISCLAIMER:** These plans are intended as a guide only. Window size and location may vary. Refer to level plans for window locations. Refer to contract for options and chattels inclusions. The dimensions and areas are approximate only and may not accurately represent the actual dimensions and areas of the apartments or the spaces within them and are subject to change without notice. In addition, locations of utilities may vary during construction and fittings and fixtures on these plans are for illustrative purposes only. The areas are generally measured in accordance with the Property Council of Australia method of measurement. Prospective purchasers must rely on their own enquiries and should refer to the Contract of Sale and its schedules for all matters to be included in the purchase price of the apartment, including plans, finishes, fixtures, fittings, appliances and other particulars of sale. Loose furniture and planters are not included. Extent of floor finishes may vary. External space and landscaping indicative only. Refer to level plans for further information.

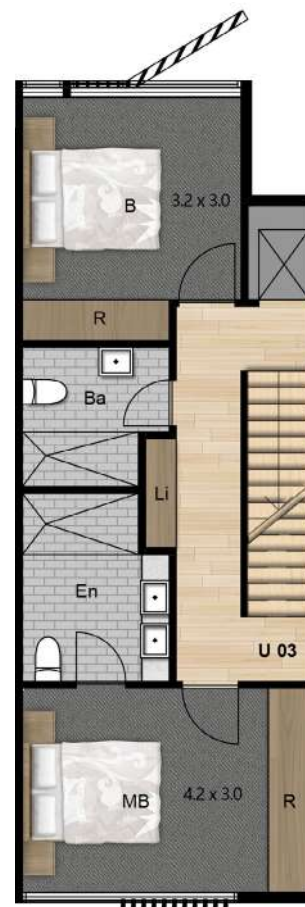




**GARAGE**



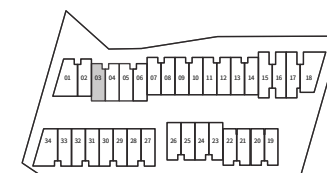
**GROUND FLOOR**



**FIRST FLOOR**



**SECOND FLOOR**



# DONCASTER GARDENS

DWELLING  
**03**



4



3.5



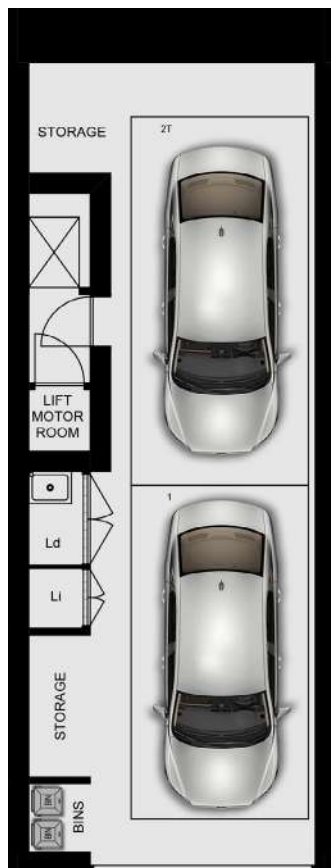
2

INTERNAL  
AREA  
209.0 m<sup>2</sup>  
22.50 SQ

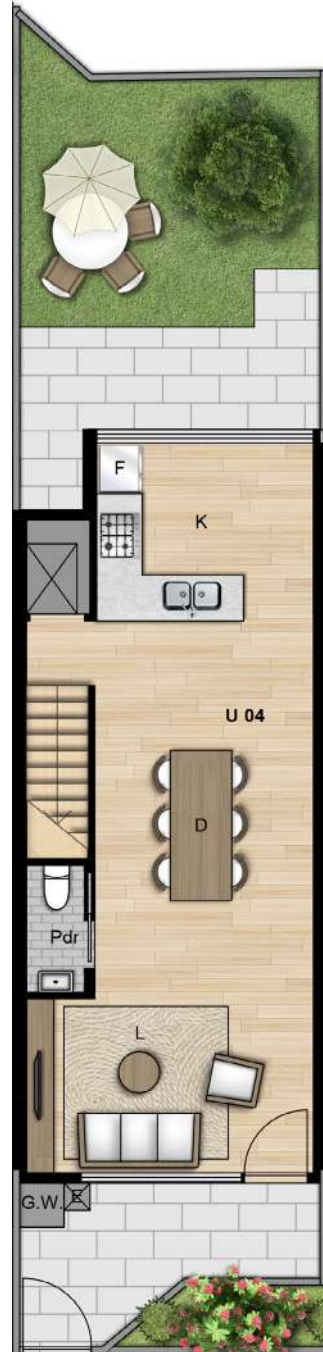
EXTERNAL  
AREA  
38.0 m<sup>2</sup>  
4.09 SQ

TOTAL  
AREA  
247.0 m<sup>2</sup>  
26.59 SQ

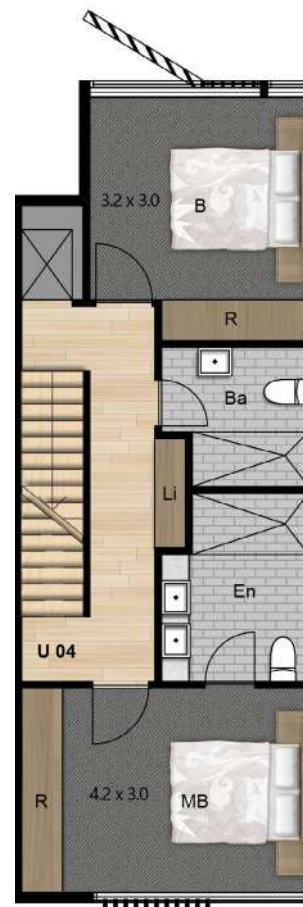
**DISCLAIMER:** These plans are intended as a guide only. Window size and location may vary. Refer to level plans for window locations. Refer to contract for options and chattels inclusions. The dimensions and areas are approximate only and may not accurately represent the actual dimensions and areas of the apartments or the spaces within them and are subject to change without notice. In addition, locations of utilities may vary during construction and fittings and fixtures on these plans are for illustrative purposes only. The areas are generally measured in accordance with the Property Council of Australia method of measurement. Prospective purchasers must rely on their own enquiries and should refer to the Contract of Sale and its schedules for all matters to be included in the purchase price of the apartment, including plans, finishes, fixtures, fittings, appliances and other particulars of sale. Loose furniture and planters are not included. Extent of floor finishes may vary. External space and landscaping indicative only. Refer to level plans for further information.



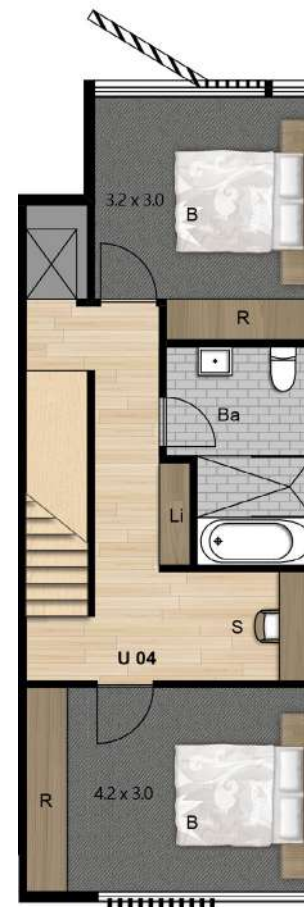
**GARAGE**



**GROUND FLOOR**



**FIRST FLOOR**



**SECOND FLOOR**



# DONCASTER GARDENS

DWELLING  
**04**



4



3.5



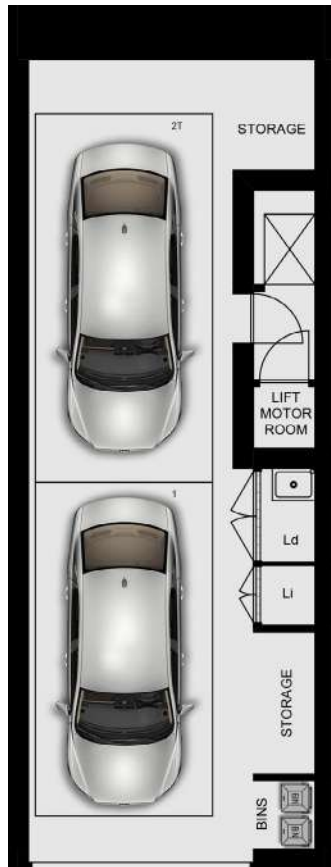
2

INTERNAL  
AREA  
209.0 m<sup>2</sup>  
22.50 SQ

EXTERNAL  
AREA  
27.0 m<sup>2</sup>  
2.91 SQ

TOTAL  
AREA  
236.0 m<sup>2</sup>  
25.40 SQ

**DISCLAIMER:** These plans are intended as a guide only. Window size and location may vary. Refer to level plans for window locations. Refer to contract for options and chattels inclusions. The dimensions and areas are approximate only and may not accurately represent the actual dimensions and areas of the apartments or the spaces within them and are subject to change without notice. In addition, locations of utilities may vary during construction and fittings and fixtures on these plans are for illustrative purposes only. The areas are generally measured in accordance with the Property Council of Australia method of measurement. Prospective purchasers must rely on their own enquiries and should refer to the Contract of Sale and its schedules for all matters to be included in the purchase price of the apartment, including plans, finishes, fixtures, fittings, appliances and other particulars of sale. Loose furniture and planters are not included. Extent of floor finishes may vary. External space and landscaping indicative only. Refer to level plans for further information.



**GARAGE**



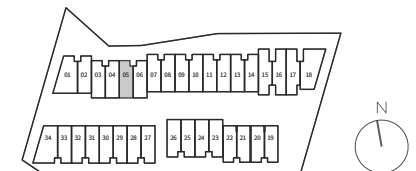
**GROUND FLOOR**



**FIRST FLOOR**



**SECOND FLOOR**



# DONCASTER GARDENS

DWELLING  
**05**



4



3.5



2

INTERNAL  
AREA

209.0 m<sup>2</sup>  
22.50 SQ

EXTERNAL  
AREA

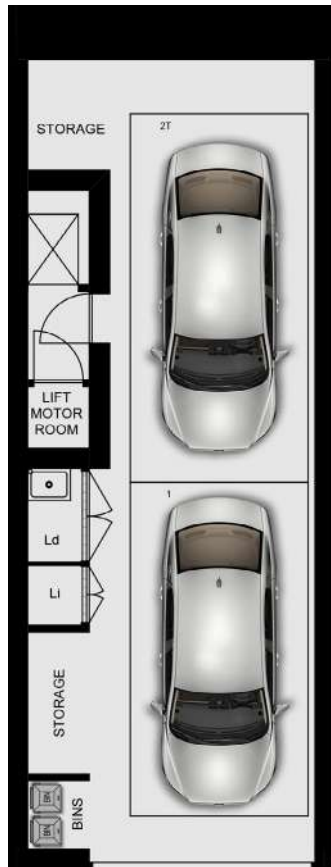
27.0 m<sup>2</sup>  
2.91 SQ

TOTAL  
AREA

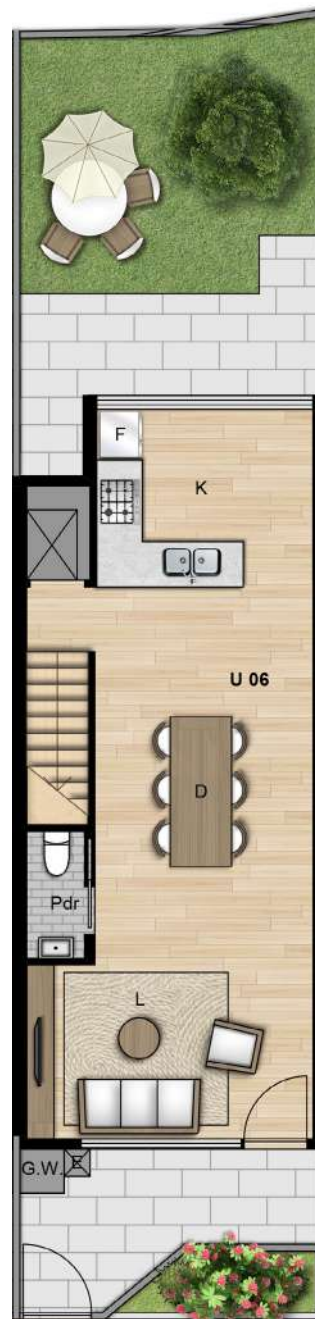
236.0 m<sup>2</sup>  
25.40 SQ

**DISCLAIMER:** These plans are intended as a guide only. Window size and location may vary. Refer to level plans for window locations. Refer to contract for options and chattels inclusions. The dimensions and areas are approximate only and may not accurately represent the actual dimensions and areas of the apartments or the spaces within them and are subject to change without notice. In addition, locations of utilities may vary during construction and fittings and fixtures on these plans are for illustrative purposes only. The areas are generally measured in accordance with the Property Council of Australia method of measurement. Prospective purchasers must rely on their own enquiries and should refer to the Contract of Sale and its schedules for all matters to be included in the purchase price of the apartment, including plans, finishes, fixtures, fittings, appliances and other particulars of sale. Loose furniture and planters are not included. Extent of floor finishes may vary. External space and landscaping indicative only. Refer to level plans for further information.

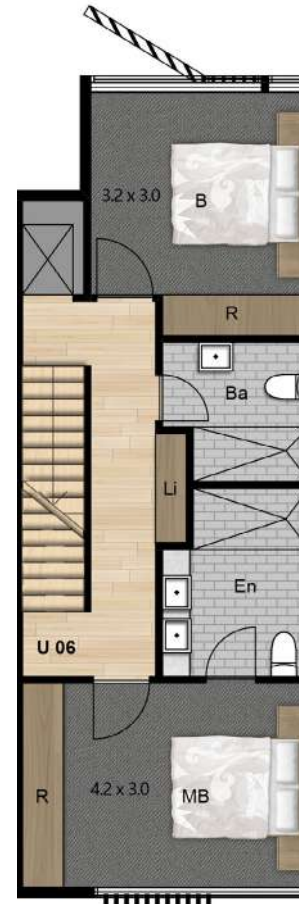




**GARAGE**



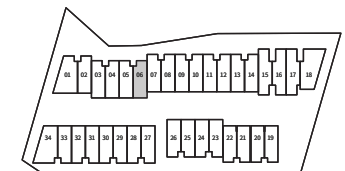
**GROUND FLOOR**



**FIRST FLOOR**



**SECOND FLOOR**



# DONCASTER GARDENS

DWELLING  
**06**



4



3.5



2

INTERNAL  
AREA

209.0 m<sup>2</sup>  
22.50 SQ

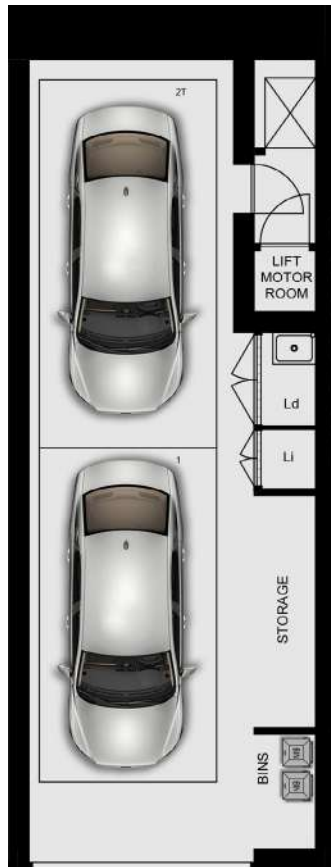
EXTERNAL  
AREA

28.0 m<sup>2</sup>  
3.01 SQ

TOTAL  
AREA

237.0 m<sup>2</sup>  
25.51 SQ

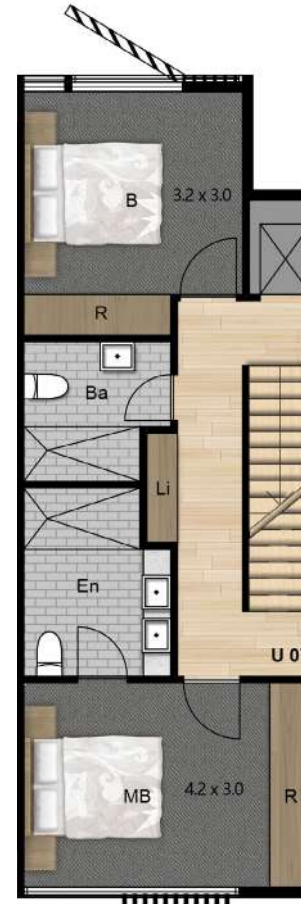
**DISCLAIMER:** These plans are intended as a guide only. Window size and location may vary. Refer to level plans for window locations. Refer to contract for options and chattels inclusions. The dimensions and areas are approximate only and may not accurately represent the actual dimensions and areas of the apartments or the spaces within them and are subject to change without notice. In addition, locations of utilities may vary during construction and fittings and fixtures on these plans are for illustrative purposes only. The areas are generally measured in accordance with the Property Council of Australia method of measurement. Prospective purchasers must rely on their own enquiries and should refer to the Contract of Sale and its schedules for all matters to be included in the purchase price of the apartment, including plans, finishes, fixtures, fittings, appliances and other particulars of sale. Loose furniture and planters are not included. Extent of floor finishes may vary. External space and landscaping indicative only. Refer to level plans for further information.



**GARAGE**



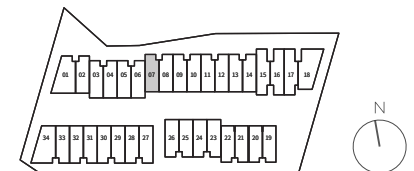
**GROUND FLOOR**



**FIRST FLOOR**



**SECOND FLOOR**



# DONCASTER GARDENS

DWELLING  
**07**



4



3.5



2

INTERNAL  
AREA

209.0 m<sup>2</sup>  
22.50 SQ

EXTERNAL  
AREA

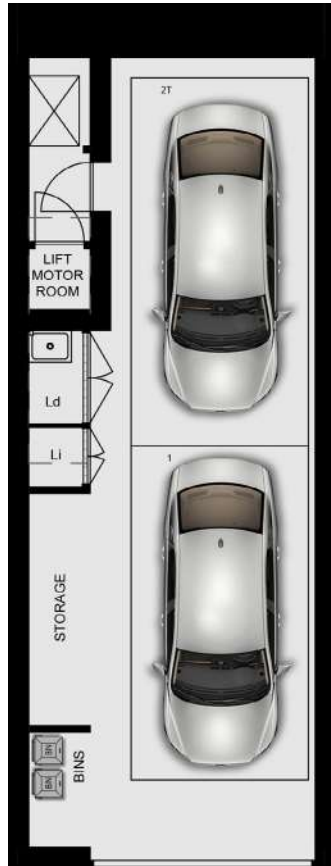
31.0 m<sup>2</sup>  
3.34 SQ

TOTAL  
AREA

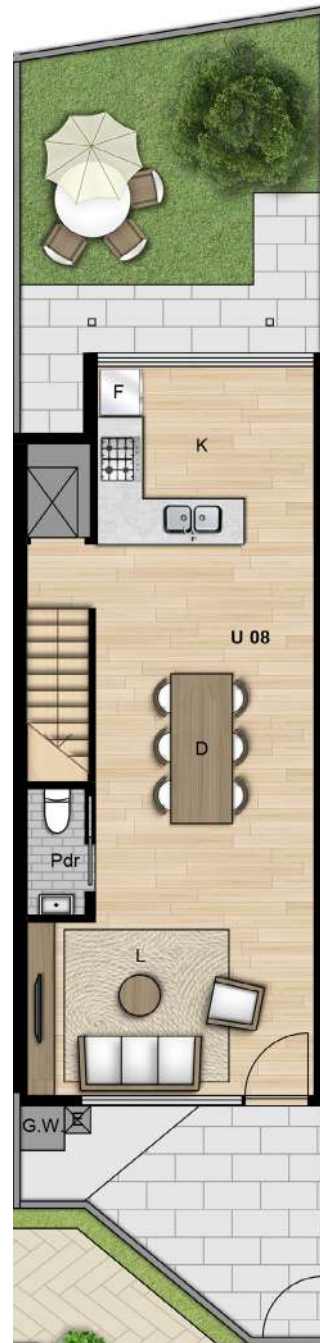
240.0 m<sup>2</sup>  
25.83 SQ

**DISCLAIMER:** These plans are intended as a guide only. Window size and location may vary. Refer to level plans for window locations. Refer to contract for options and chattels inclusions. The dimensions and areas are approximate only and may not accurately represent the actual dimensions and areas of the apartments or the spaces within them and are subject to change without notice. In addition, locations of utilities may vary during construction and fittings and fixtures on these plans are for illustrative purposes only. The areas are generally measured in accordance with the Property Council of Australia method of measurement. Prospective purchasers must rely on their own enquiries and should refer to the Contract of Sale and its schedules for all matters to be included in the purchase price of the apartment, including plans, finishes, fixtures, fittings, appliances and other particulars of sale. Loose furniture and planters are not included. Extent of floor finishes may vary. External space and landscaping indicative only. Refer to level plans for further information.

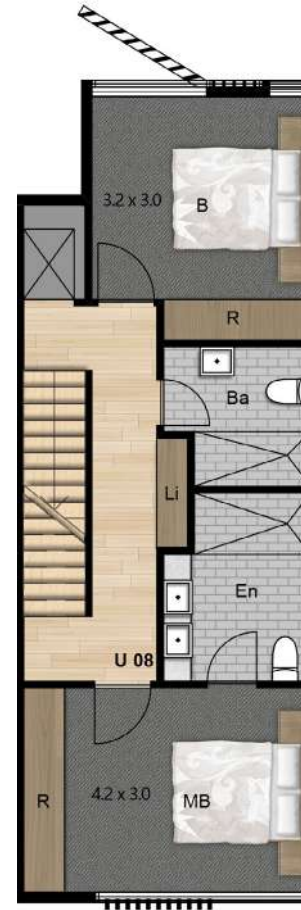




**GARAGE**



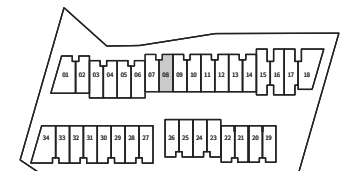
**GROUND FLOOR**



**FIRST FLOOR**



**SECOND FLOOR**



# DONCASTER GARDENS

DWELLING  
**08**



4



3.5



2

INTERNAL  
AREA

209.0 m<sup>2</sup>  
22.50 SQ

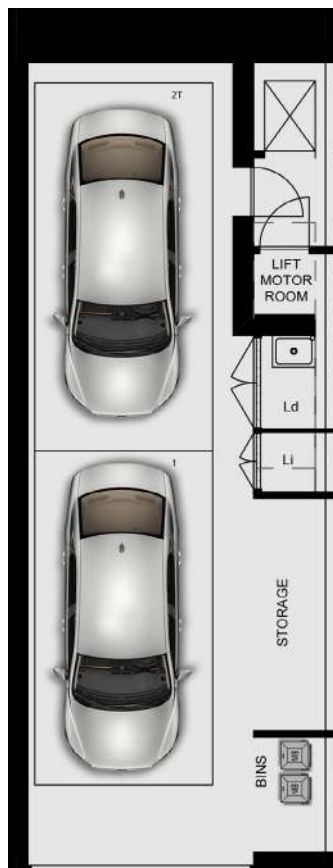
EXTERNAL  
AREA

34.0 m<sup>2</sup>  
3.66 SQ

TOTAL  
AREA

243.0 m<sup>2</sup>  
26.16 SQ

**DISCLAIMER:** These plans are intended as a guide only. Window size and location may vary. Refer to level plans for window locations. Refer to contract for options and chattels inclusions. The dimensions and areas are approximate only and may not accurately represent the actual dimensions and areas of the apartments or the spaces within them and are subject to change without notice. In addition, locations of utilities may vary during construction and fittings and fixtures on these plans are for illustrative purposes only. The areas are generally measured in accordance with the Property Council of Australia method of measurement. Prospective purchasers must rely on their own enquiries and should refer to the Contract of Sale and its schedules for all matters to be included in the purchase price of the apartment, including plans, finishes, fixtures, fittings, appliances and other particulars of sale. Loose furniture and planters are not included. Extent of floor finishes may vary. External space and landscaping indicative only. Refer to level plans for further information.



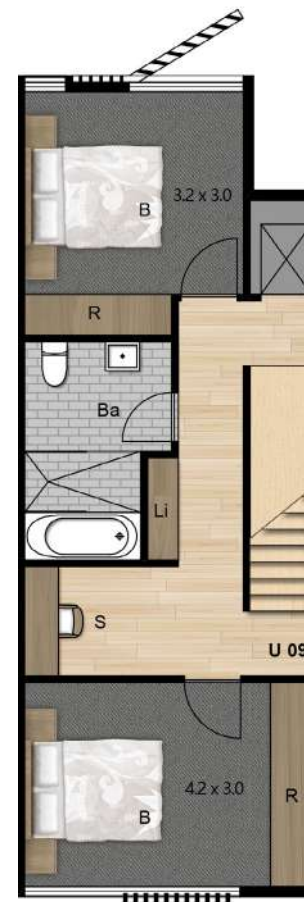
**GARAGE**



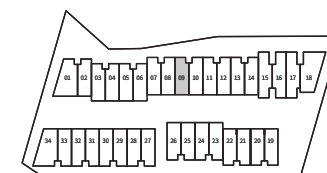
**GROUND FLOOR**



**FIRST FLOOR**



**SECOND FLOOR**



# DONCASTER GARDENS

DWELLING  
**09**



4



3.5



2

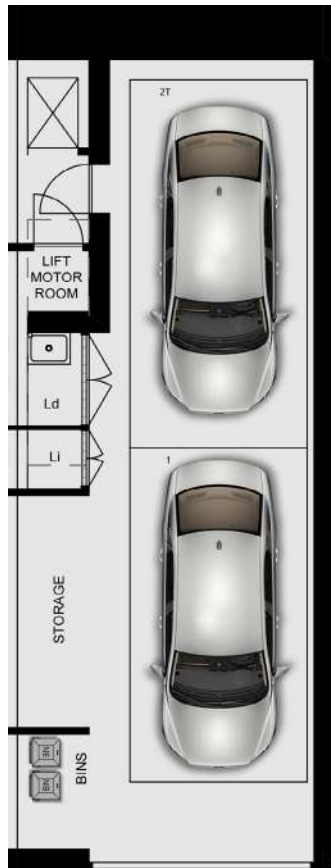
INTERNAL  
AREA  
209.0 m<sup>2</sup>  
22.50 SQ

EXTERNAL  
AREA  
37.0 m<sup>2</sup>  
3.98 SQ

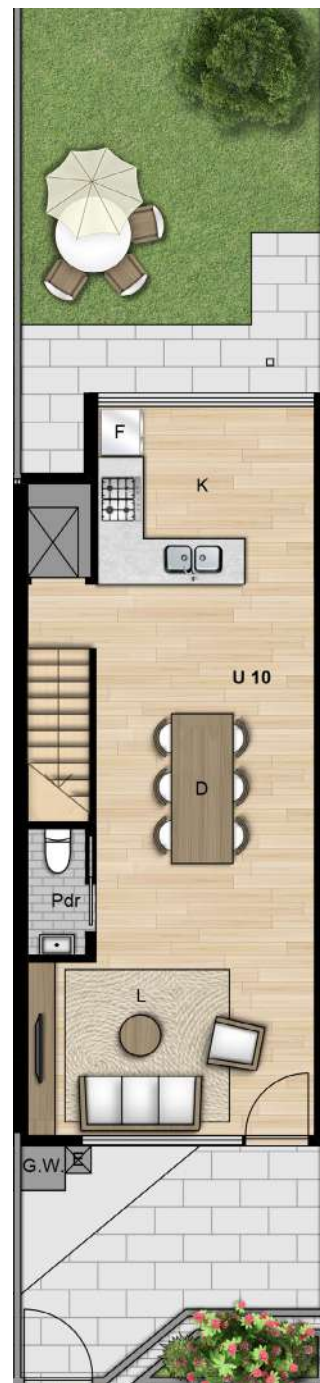
TOTAL  
AREA  
246.0 m<sup>2</sup>  
26.48 SQ

**DISCLAIMER:** These plans are intended as a guide only. Window size and location may vary. Refer to level plans for window locations. Refer to contract for options and chattels inclusions. The dimensions and areas are approximate only and may not accurately represent the actual dimensions and areas of the apartments or the spaces within them and are subject to change without notice. In addition, locations of utilities may vary during construction and fittings and fixtures on these plans are for illustrative purposes only. The areas are generally measured in accordance with the Property Council of Australia method of measurement. Prospective purchasers must rely on their own enquiries and should refer to the Contract of Sale and its schedules for all matters to be included in the purchase price of the apartment, including plans, finishes, fixtures, fittings, appliances and other particulars of sale. Loose furniture and planters are not included. Extent of floor finishes may vary. External space and landscaping indicative only. Refer to level plans for further information.

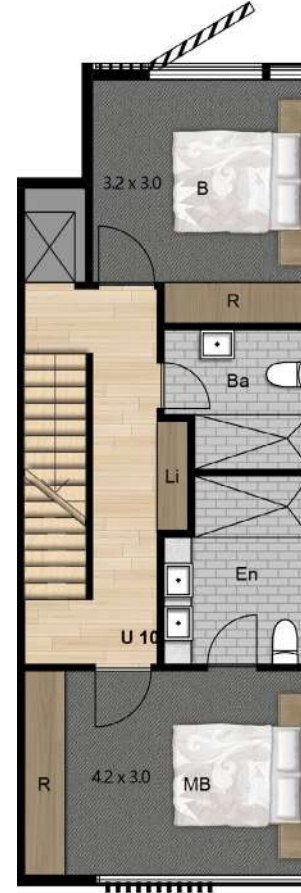




**GARAGE**



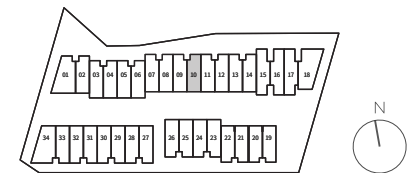
**GROUND FLOOR**



**FIRST FLOOR**



**SECOND FLOOR**



# DONCASTER GARDENS

DWELLING  
**10**



4



3.5



2

INTERNAL  
AREA

209.0 m<sup>2</sup>  
22.50 SQ

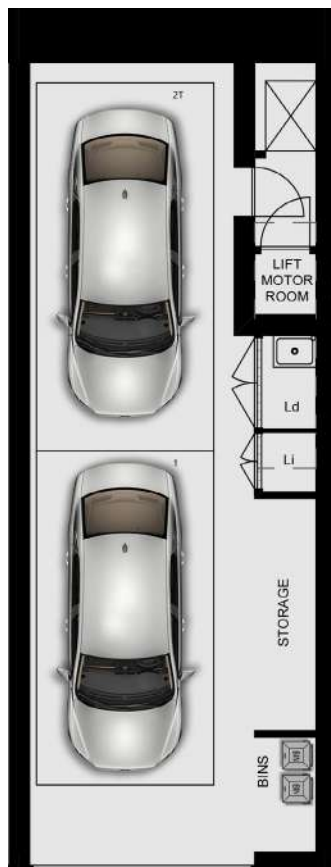
EXTERNAL  
AREA

40.0 m<sup>2</sup>  
4.31 SQ

TOTAL  
AREA

249.0 m<sup>2</sup>  
26.80 SQ

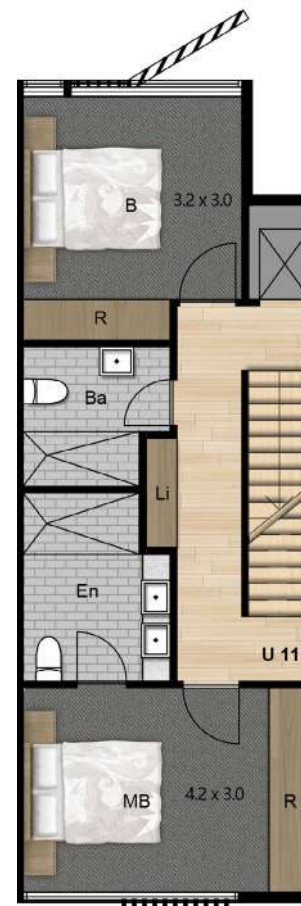
**DISCLAIMER:** These plans are intended as a guide only. Window size and location may vary. Refer to level plans for window locations. Refer to contract for options and chattels inclusions. The dimensions and areas are approximate only and may not accurately represent the actual dimensions and areas of the apartments or the spaces within them and are subject to change without notice. In addition, locations of utilities may vary during construction and fittings and fixtures on these plans are for illustrative purposes only. The areas are generally measured in accordance with the Property Council of Australia method of measurement. Prospective purchasers must rely on their own enquiries and should refer to the Contract of Sale and its schedules for all matters to be included in the purchase price of the apartment, including plans, finishes, fixtures, fittings, appliances and other particulars of sale. Loose furniture and planters are not included. Extent of floor finishes may vary. External space and landscaping indicative only. Refer to level plans for further information.



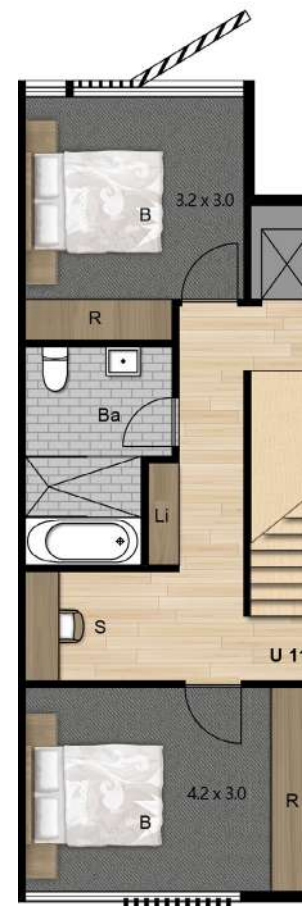
**GARAGE**



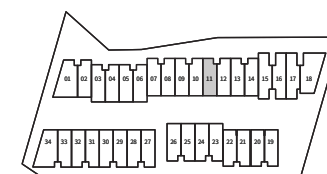
**GROUND FLOOR**



**FIRST FLOOR**



**SECOND FLOOR**



# DONCASTER GARDENS

DWELLING  
**11**



4



3.5



2

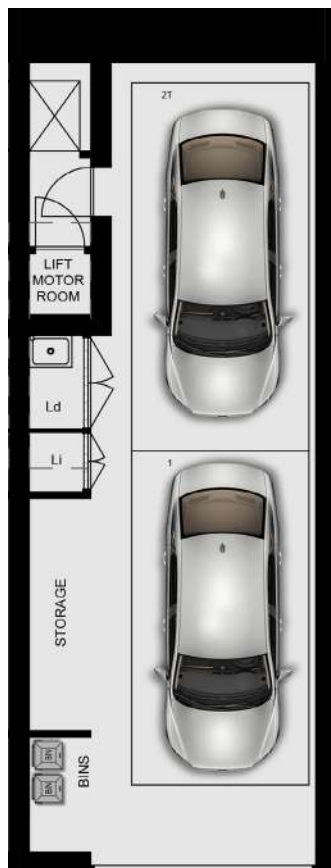
INTERNAL  
AREA  
209.0 m<sup>2</sup>  
22.50 SQ

EXTERNAL  
AREA  
44.0 m<sup>2</sup>  
4.74 SQ

TOTAL  
AREA  
253.0 m<sup>2</sup>  
27.23 SQ

**DISCLAIMER:** These plans are intended as a guide only. Window size and location may vary. Refer to level plans for window locations. Refer to contract for options and chattels inclusions. The dimensions and areas are approximate only and may not accurately represent the actual dimensions and areas of the apartments or the spaces within them and are subject to change without notice. In addition, locations of utilities may vary during construction and fittings and fixtures on these plans are for illustrative purposes only. The areas are generally measured in accordance with the Property Council of Australia method of measurement. Prospective purchasers must rely on their own enquiries and should refer to the Contract of Sale and its schedules for all matters to be included in the purchase price of the apartment, including plans, finishes, fixtures, fittings, appliances and other particulars of sale. Loose furniture and planters are not included. Extent of floor finishes may vary. External space and landscaping indicative only. Refer to level plans for further information.

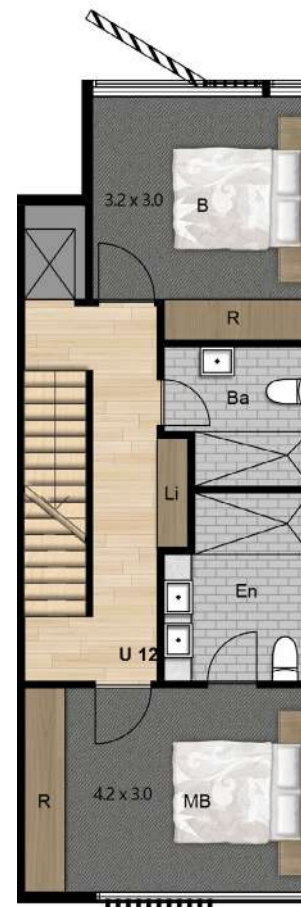




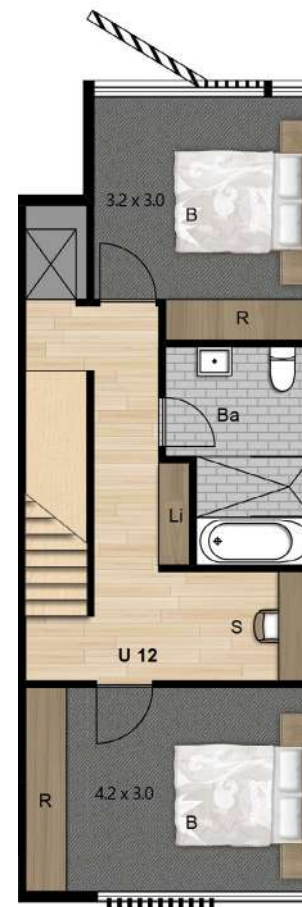
**GARAGE**



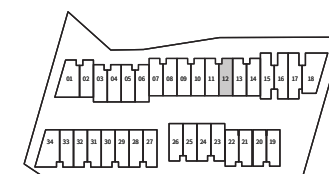
**GROUND FLOOR**



**FIRST FLOOR**



**SECOND FLOOR**



# DONCASTER GARDENS

DWELLING  
**12**



4



3.5



2

INTERNAL  
AREA

209.0 m<sup>2</sup>  
22.50 SQ

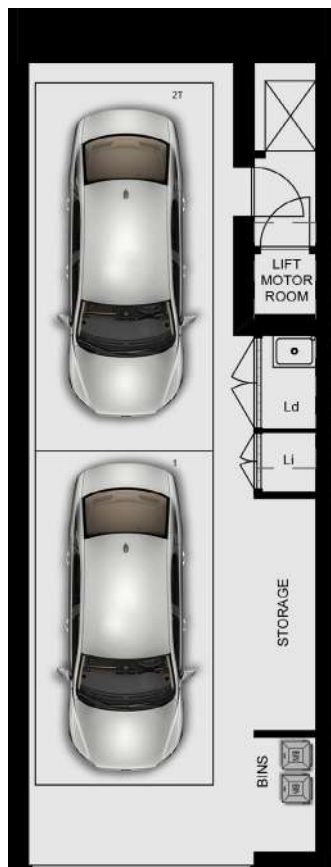
EXTERNAL  
AREA

45.0 m<sup>2</sup>  
4.84 SQ

TOTAL  
AREA

254.0 m<sup>2</sup>  
27.34 SQ

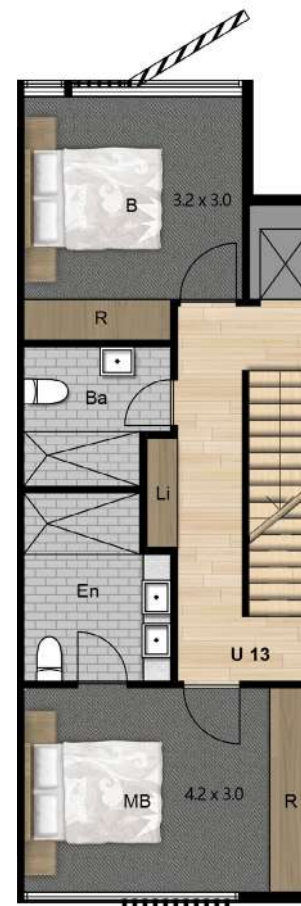
**DISCLAIMER:** These plans are intended as a guide only. Window size and location may vary. Refer to level plans for window locations. Refer to contract for options and chattels inclusions. The dimensions and areas are approximate only and may not accurately represent the actual dimensions and areas of the apartments or the spaces within them and are subject to change without notice. In addition, locations of utilities may vary during construction and fittings and fixtures on these plans are for illustrative purposes only. The areas are generally measured in accordance with the Property Council of Australia method of measurement. Prospective purchasers must rely on their own enquiries and should refer to the Contract of Sale and its schedules for all matters to be included in the purchase price of the apartment, including plans, finishes, fixtures, fittings, appliances and other particulars of sale. Loose furniture and planters are not included. Extent of floor finishes may vary. External space and landscaping indicative only. Refer to level plans for further information.



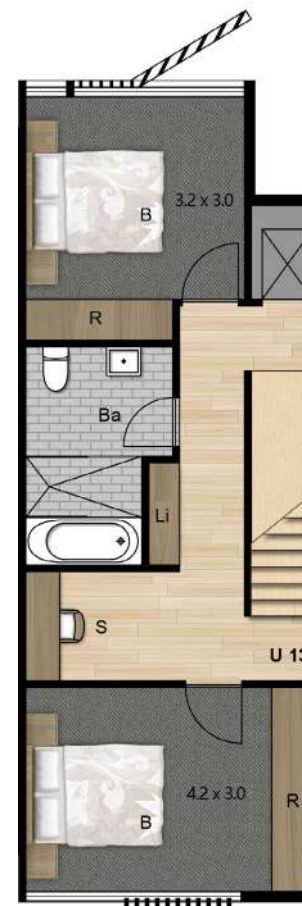
**GARAGE**



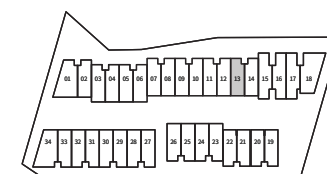
**GROUND FLOOR**



**FIRST FLOOR**



**SECOND FLOOR**



# DONCASTER GARDENS

DWELLING  
**13**



4



3.5



2

INTERNAL  
AREA

209.0 m<sup>2</sup>  
22.50 SQ

EXTERNAL  
AREA

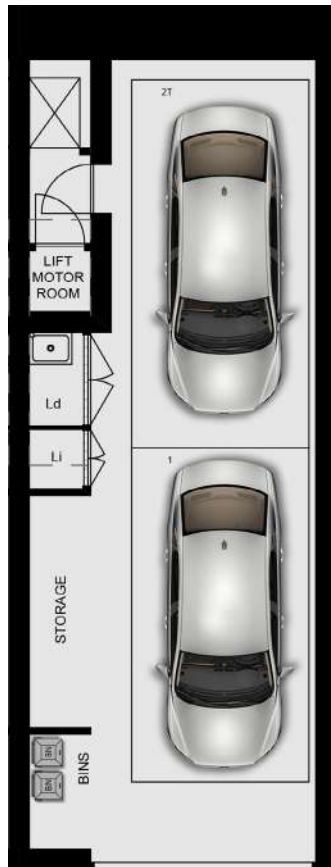
45.0 m<sup>2</sup>  
4.84 SQ

TOTAL  
AREA

254.0 m<sup>2</sup>  
27.34 SQ

**DISCLAIMER:** These plans are intended as a guide only. Window size and location may vary. Refer to level plans for window locations. Refer to contract for options and chattels inclusions. The dimensions and areas are approximate only and may not accurately represent the actual dimensions and areas of the apartments or the spaces within them and are subject to change without notice. In addition, locations of utilities may vary during construction and fittings and fixtures on these plans are for illustrative purposes only. The areas are generally measured in accordance with the Property Council of Australia method of measurement. Prospective purchasers must rely on their own enquiries and should refer to the Contract of Sale and its schedules for all matters to be included in the purchase price of the apartment, including plans, finishes, fixtures, fittings, appliances and other particulars of sale. Loose furniture and planters are not included. Extent of floor finishes may vary. External space and landscaping indicative only. Refer to level plans for further information.

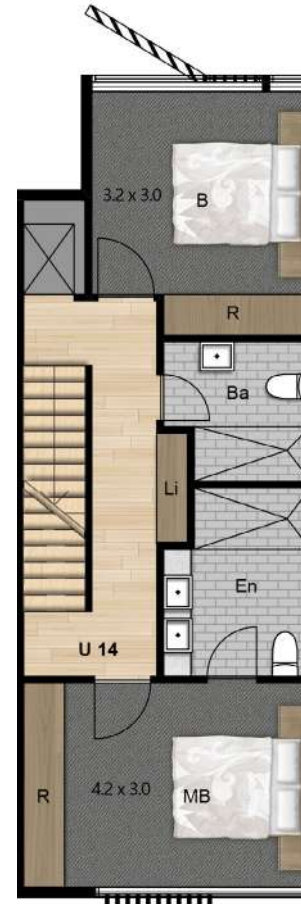




**GARAGE**



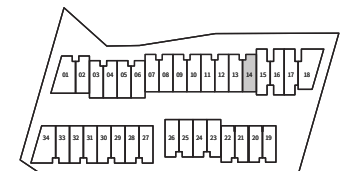
**GROUND FLOOR**



**FIRST FLOOR**



**SECOND FLOOR**



# DONCASTER GARDENS

DWELLING  
**14**



4



3.5



2

INTERNAL  
AREA

209.0 m<sup>2</sup>  
22.50 SQ

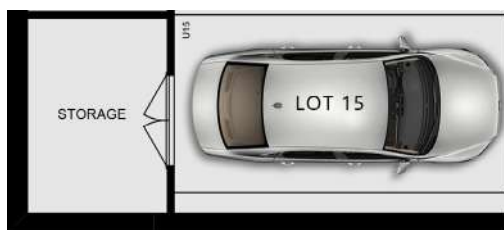
EXTERNAL  
AREA

45.0 m<sup>2</sup>  
4.84 SQ

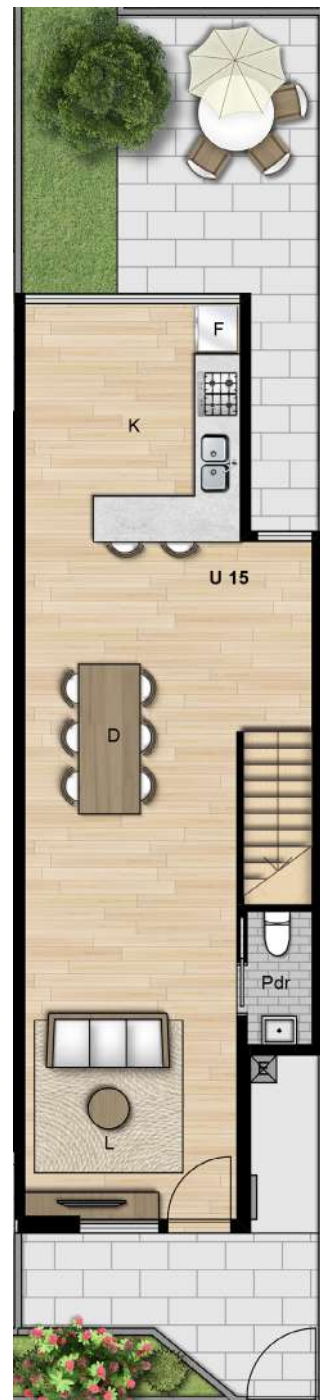
TOTAL  
AREA

254.0 m<sup>2</sup>  
27.34 SQ

**DISCLAIMER:** These plans are intended as a guide only. Window size and location may vary. Refer to level plans for window locations. Refer to contract for options and chattels inclusions. The dimensions and areas are approximate only and may not accurately represent the actual dimensions and areas of the apartments or the spaces within them and are subject to change without notice. In addition, locations of utilities may vary during construction and fittings and fixtures on these plans are for illustrative purposes only. The areas are generally measured in accordance with the Property Council of Australia method of measurement. Prospective purchasers must rely on their own enquiries and should refer to the Contract of Sale and its schedules for all matters to be included in the purchase price of the apartment, including plans, finishes, fixtures, fittings, appliances and other particulars of sale. Loose furniture and planters are not included. Extent of floor finishes may vary. External space and landscaping indicative only. Refer to level plans for further information.



CAR PARK



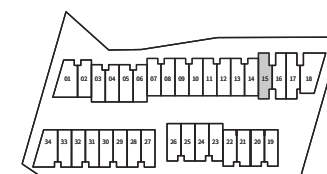
GROUND FLOOR



FIRST FLOOR



SECOND FLOOR



**DONCASTER  
GARDENS**

DWELLING  
**15**



4



3.5



2

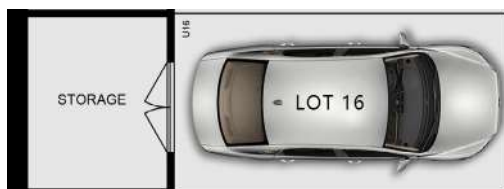
INTERNAL  
AREA  
200.0 m<sup>2</sup>  
21.53 SQ

EXTERNAL  
AREA  
38.0 m<sup>2</sup>  
4.09 SQ

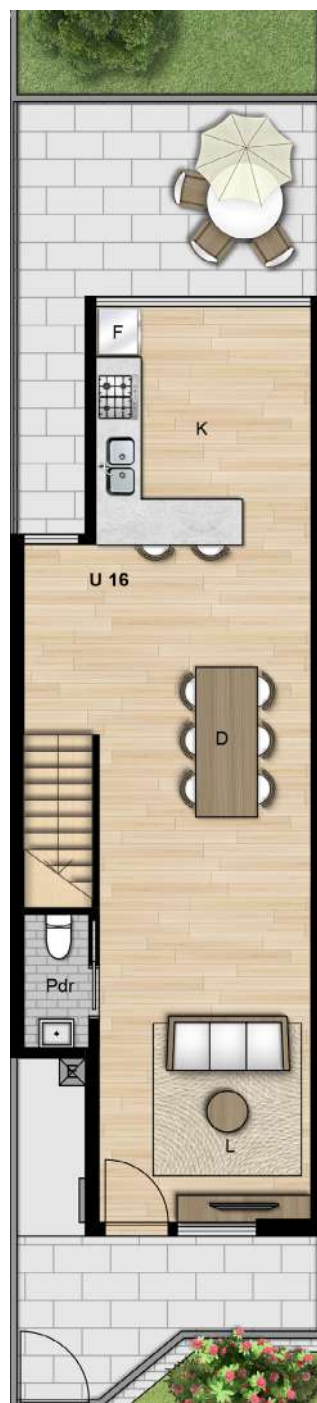
TOTAL  
AREA  
238.0 m<sup>2</sup>  
25.62 SQ

**DISCLAIMER:** These plans are intended as a guide only. Window size and location may vary. Refer to level plans for window locations. Refer to contract for options and chattels inclusions. The dimensions and areas are approximate only and may not accurately represent the actual dimensions and areas of the apartments or the spaces within them and are subject to change without notice. In addition, locations of utilities may vary during construction and fittings and fixtures on these plans are for illustrative purposes only. The areas are generally measured in accordance with the Property Council of Australia method of measurement. Prospective purchasers must rely on their own enquiries and should refer to the Contract of Sale and its schedules for all matters to be included in the purchase price of the apartment, including plans, finishes, fixtures, fittings, appliances and other particulars of sale. Loose furniture and planters are not included. Extent of floor finishes may vary. External space and landscaping indicative only. Refer to level plans for further information.

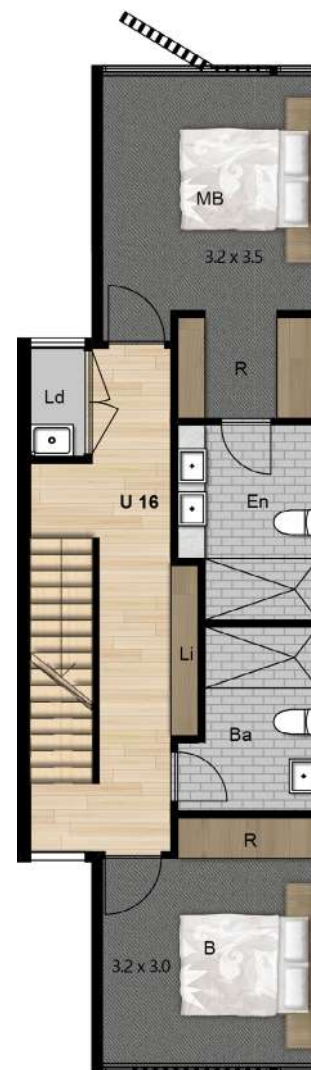




**CAR PARK**



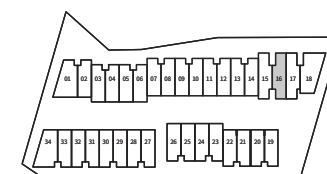
**GROUND FLOOR**



**FIRST FLOOR**



**SECOND FLOOR**



# DONCASTER GARDENS

DWELLING  
**16**



4



3.5



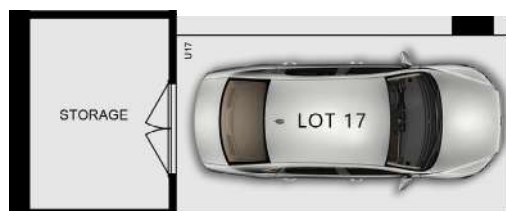
2

INTERNAL  
AREA  
200.0 m<sup>2</sup>  
21.53 SQ

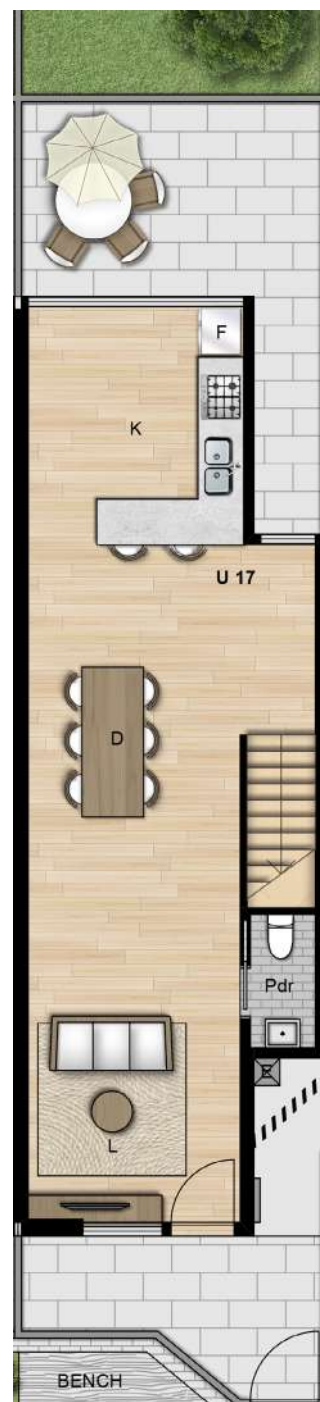
EXTERNAL  
AREA  
38.0 m<sup>2</sup>  
4.09 SQ

TOTAL  
AREA  
238.0 m<sup>2</sup>  
25.62 SQ

**DISCLAIMER:** These plans are intended as a guide only. Window size and location may vary. Refer to level plans for window locations. Refer to contract for options and chattels inclusions. The dimensions and areas are approximate only and may not accurately represent the actual dimensions and areas of the apartments or the spaces within them and are subject to change without notice. In addition, locations of utilities may vary during construction and fittings and fixtures on these plans are for illustrative purposes only. The areas are generally measured in accordance with the Property Council of Australia method of measurement. Prospective purchasers must rely on their own enquiries and should refer to the Contract of Sale and its schedules for all matters to be included in the purchase price of the apartment, including plans, finishes, fixtures, fittings, appliances and other particulars of sale. Loose furniture and planters are not included. Extent of floor finishes may vary. External space and landscaping indicative only. Refer to level plans for further information.



**CAR PARK**



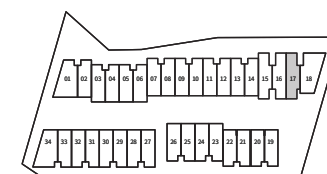
**GROUND FLOOR**



**FIRST FLOOR**



**SECOND FLOOR**



# DONCASTER GARDENS

DWELLING  
**17**



4



3.5



2

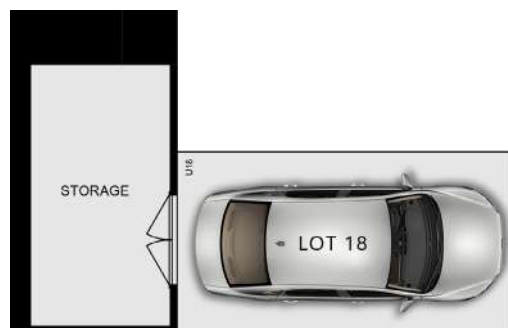
INTERNAL  
AREA  
200.0 m<sup>2</sup>  
21.53 SQ

EXTERNAL  
AREA  
38.0 m<sup>2</sup>  
4.09 SQ

TOTAL  
AREA  
238.0 m<sup>2</sup>  
25.62 SQ

**DISCLAIMER:** These plans are intended as a guide only. Window size and location may vary. Refer to level plans for window locations. Refer to contract for options and chattels inclusions. The dimensions and areas are approximate only and may not accurately represent the actual dimensions and areas of the apartments or the spaces within them and are subject to change without notice. In addition, locations of utilities may vary during construction and fittings and fixtures on these plans are for illustrative purposes only. The areas are generally measured in accordance with the Property Council of Australia method of measurement. Prospective purchasers must rely on their own enquiries and should refer to the Contract of Sale and its schedules for all matters to be included in the purchase price of the apartment, including plans, finishes, fixtures, fittings, appliances and other particulars of sale. Loose furniture and planters are not included. Extent of floor finishes may vary. External space and landscaping indicative only. Refer to level plans for further information.





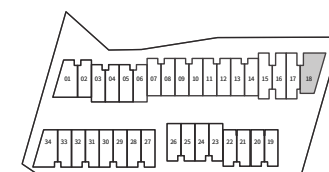
**CAR PARK**



**GROUND FLOOR**



**FIRST FLOOR**



# DONCASTER GARDENS

DWELLING  
**18**



3



3.5



2

INTERNAL  
AREA

175.0 m<sup>2</sup>  
18.84 SQ

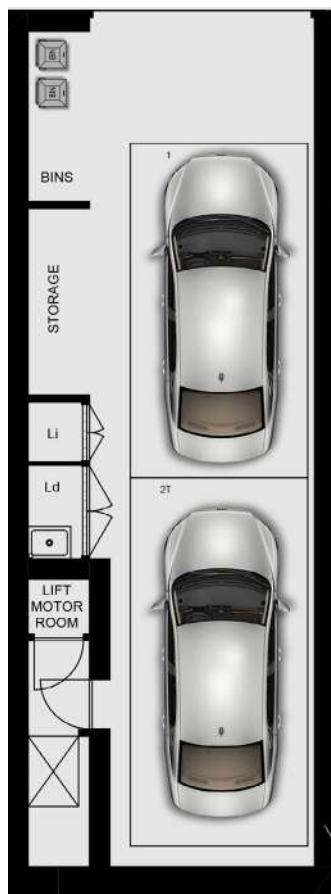
EXTERNAL  
AREA

129.0 m<sup>2</sup>  
13.89 SQ

TOTAL  
AREA

304.0 m<sup>2</sup>  
32.72 SQ

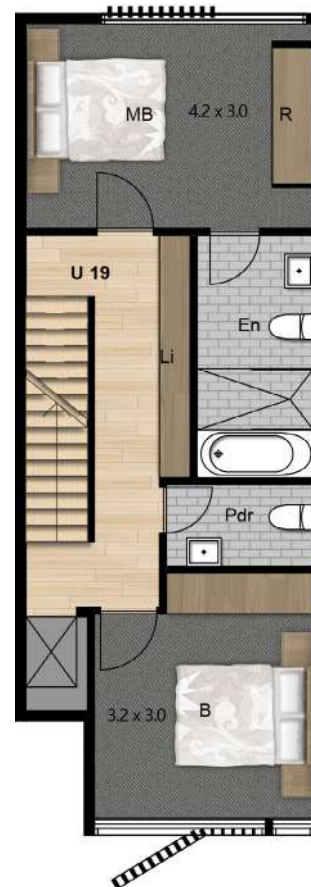
**DISCLAIMER:** These plans are intended as a guide only. Window size and location may vary. Refer to level plans for window locations. Refer to contract for options and chattels inclusions. The dimensions and areas are approximate only and may not accurately represent the actual dimensions and areas of the apartments or the spaces within them and are subject to change without notice. In addition, locations of utilities may vary during construction and fittings and fixtures on these plans are for illustrative purposes only. The areas are generally measured in accordance with the Property Council of Australia method of measurement. Prospective purchasers must rely on their own enquiries and should refer to the Contract of Sale and its schedules for all matters to be included in the purchase price of the apartment, including plans, finishes, fixtures, fittings, appliances and other particulars of sale. Loose furniture and planters are not included. Extent of floor finishes may vary. External space and landscaping indicative only. Refer to level plans for further information.



**GARAGE**



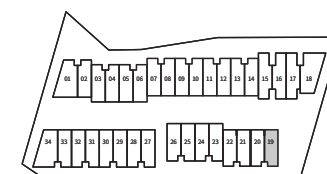
**GROUND FLOOR**



**FIRST FLOOR**



**SECOND FLOOR**



# DONCASTER GARDENS

DWELLING  
**19**



4



3.5



2

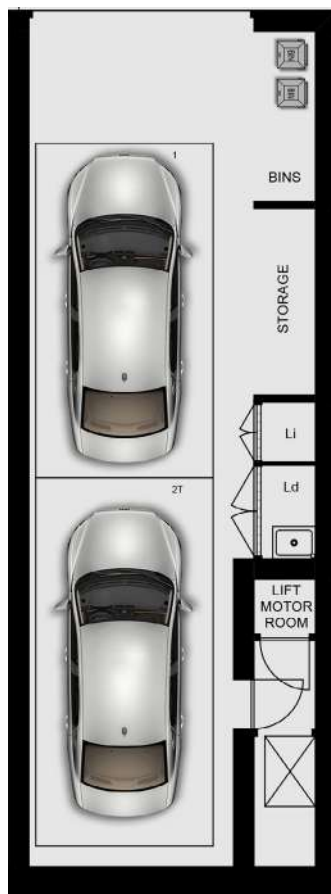
INTERNAL  
AREA  
205.0 m<sup>2</sup>  
22.07 SQ

EXTERNAL  
AREA  
42.0 m<sup>2</sup>  
4.52 SQ

TOTAL  
AREA  
247.0 m<sup>2</sup>  
26.59 SQ

**DISCLAIMER:** These plans are intended as a guide only. Window size and location may vary. Refer to level plans for window locations. Refer to contract for options and chattels inclusions. The dimensions and areas are approximate only and may not accurately represent the actual dimensions and areas of the apartments or the spaces within them and are subject to change without notice. In addition, locations of utilities may vary during construction and fittings and fixtures on these plans are for illustrative purposes only. The areas are generally measured in accordance with the Property Council of Australia method of measurement. Prospective purchasers must rely on their own enquiries and should refer to the Contract of Sale and its schedules for all matters to be included in the purchase price of the apartment, including plans, finishes, fixtures, fittings, appliances and other particulars of sale. Loose furniture and planters are not included. Extent of floor finishes may vary. External space and landscaping indicative only. Refer to level plans for further information.

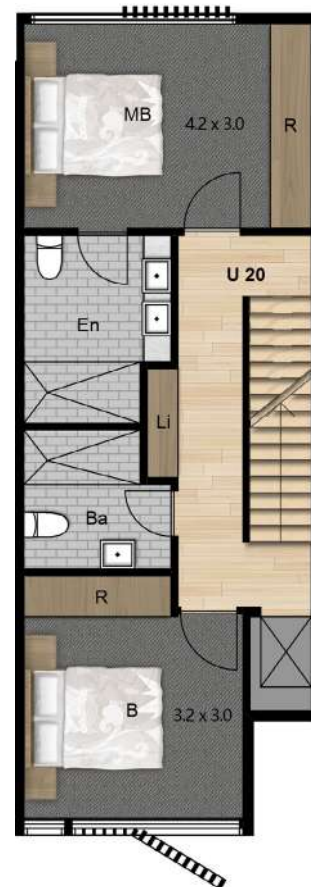




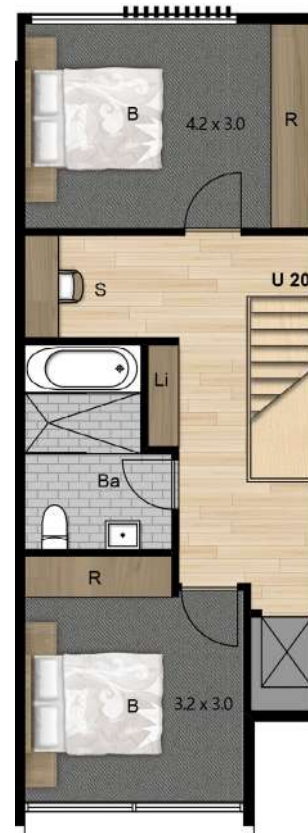
**GARAGE**



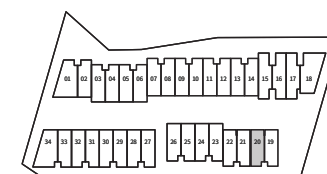
**GROUND FLOOR**



**FIRST FLOOR**



**SECOND FLOOR**



# DONCASTER GARDENS

DWELLING  
**20**



4



3.5



2

INTERNAL  
AREA

205.0 m<sup>2</sup>  
22.07 SQ

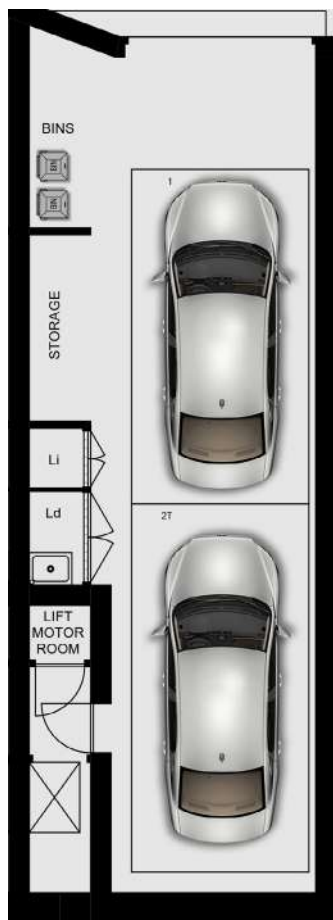
EXTERNAL  
AREA

42.0 m<sup>2</sup>  
4.52 SQ

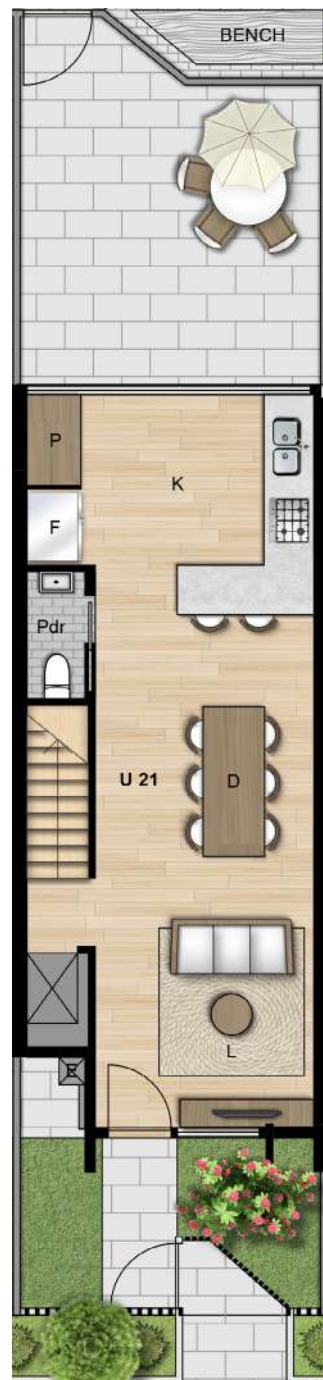
TOTAL  
AREA

247.0 m<sup>2</sup>  
26.59 SQ

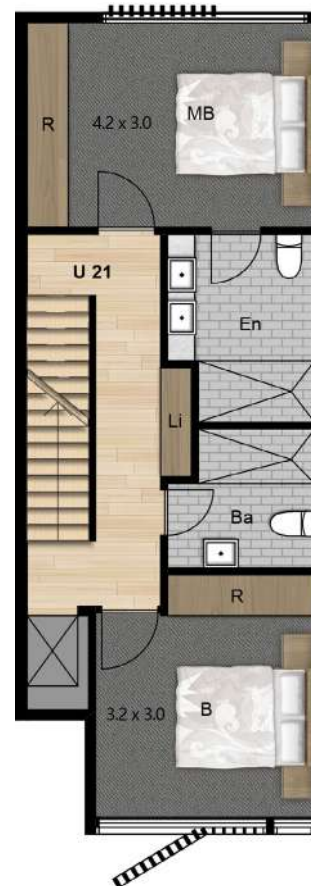
**DISCLAIMER:** These plans are intended as a guide only. Window size and location may vary. Refer to level plans for window locations. Refer to contract for options and chattels inclusions. The dimensions and areas are approximate only and may not accurately represent the actual dimensions and areas of the apartments or the spaces within them and are subject to change without notice. In addition, locations of utilities may vary during construction and fittings and fixtures on these plans are for illustrative purposes only. The areas are generally measured in accordance with the Property Council of Australia method of measurement. Prospective purchasers must rely on their own enquiries and should refer to the Contract of Sale and its schedules for all matters to be included in the purchase price of the apartment, including plans, finishes, fixtures, fittings, appliances and other particulars of sale. Loose furniture and planters are not included. Extent of floor finishes may vary. External space and landscaping indicative only. Refer to level plans for further information.



**GARAGE**



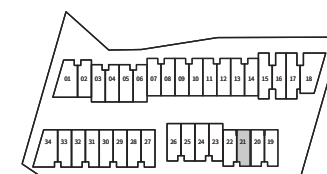
**GROUND FLOOR**



**FIRST FLOOR**



**SECOND FLOOR**



# DONCASTER GARDENS

DWELLING  
**21**



4



3.5



2

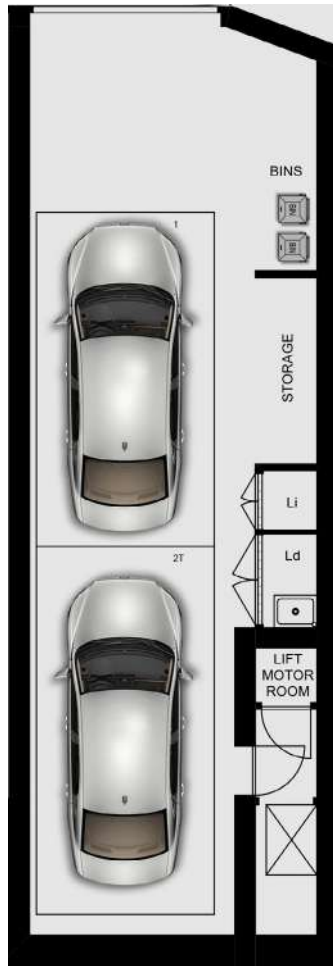
INTERNAL  
AREA  
205.0 m<sup>2</sup>  
22.07 SQ

EXTERNAL  
AREA  
42.0 m<sup>2</sup>  
4.52 SQ

TOTAL  
AREA  
247.0 m<sup>2</sup>  
26.59 SQ

**DISCLAIMER:** These plans are intended as a guide only. Window size and location may vary. Refer to level plans for window locations. Refer to contract for options and chattels inclusions. The dimensions and areas are approximate only and may not accurately represent the actual dimensions and areas of the apartments or the spaces within them and are subject to change without notice. In addition, locations of utilities may vary during construction and fittings and fixtures on these plans are for illustrative purposes only. The areas are generally measured in accordance with the Property Council of Australia method of measurement. Prospective purchasers must rely on their own enquiries and should refer to the Contract of Sale and its schedules for all matters to be included in the purchase price of the apartment, including plans, finishes, fixtures, fittings, appliances and other particulars of sale. Loose furniture and planters are not included. Extent of floor finishes may vary. External space and landscaping indicative only. Refer to level plans for further information.

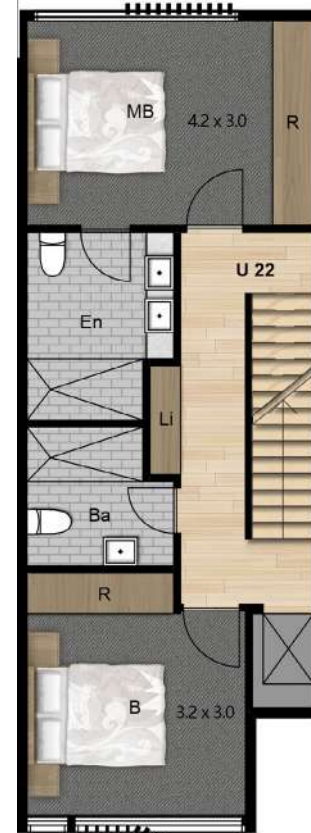




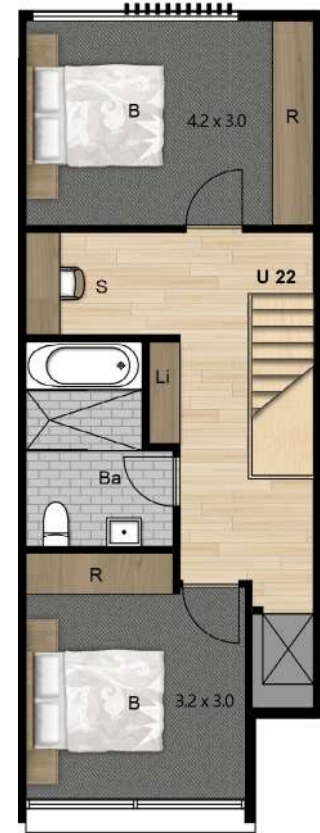
**GARAGE**



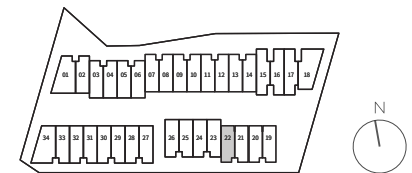
**GROUND FLOOR**



**FIRST FLOOR**



**SECOND FLOOR**



# DONCASTER GARDENS

DWELLING  
**22**



4



3.5



2

INTERNAL  
AREA

205.0 m<sup>2</sup>  
22.07 SQ

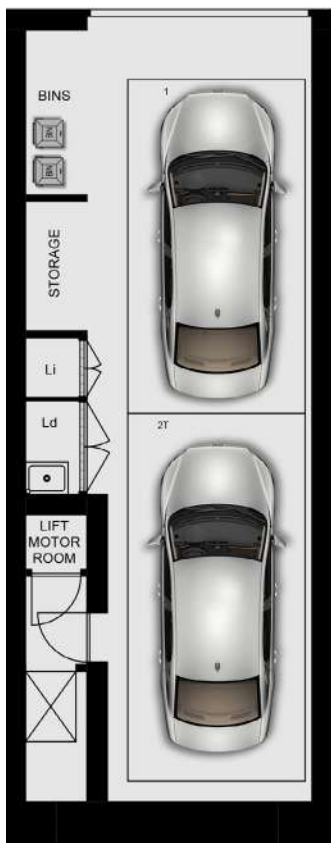
EXTERNAL  
AREA

42.0 m<sup>2</sup>  
4.52 SQ

TOTAL  
AREA

247.0 m<sup>2</sup>  
26.59 SQ

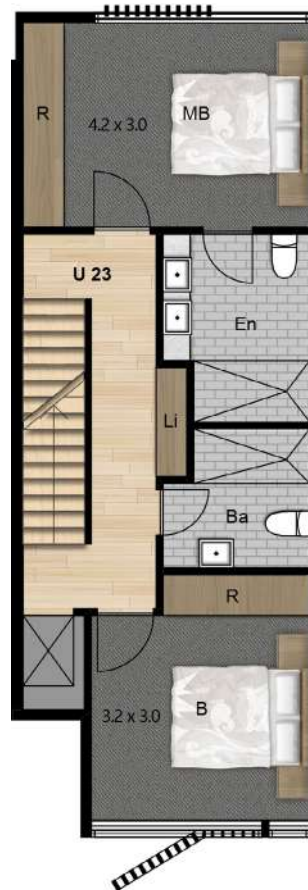
**DISCLAIMER:** These plans are intended as a guide only. Window size and location may vary. Refer to level plans for window locations. Refer to contract for options and chattels inclusions. The dimensions and areas are approximate only and may not accurately represent the actual dimensions and areas of the apartments or the spaces within them and are subject to change without notice. In addition, locations of utilities may vary during construction and fittings and fixtures on these plans are for illustrative purposes only. The areas are generally measured in accordance with the Property Council of Australia method of measurement. Prospective purchasers must rely on their own enquiries and should refer to the Contract of Sale and its schedules for all matters to be included in the purchase price of the apartment, including plans, finishes, fixtures, fittings, appliances and other particulars of sale. Loose furniture and planters are not included. Extent of floor finishes may vary. External space and landscaping indicative only. Refer to level plans for further information.



**GARAGE**



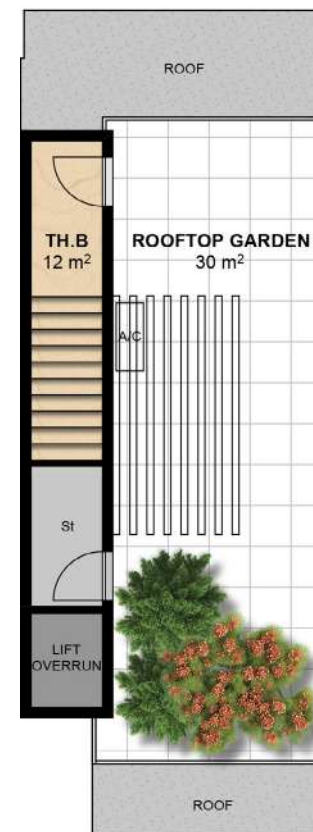
**GROUND FLOOR**



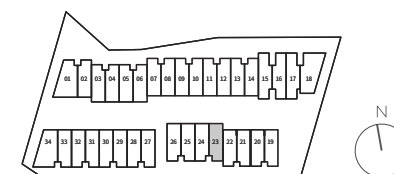
**FIRST FLOOR**



**SECOND FLOOR**



**ROOFTOP GARDEN**



# DONCASTER GARDENS

DWELLING  
**23**

4

3.5

2

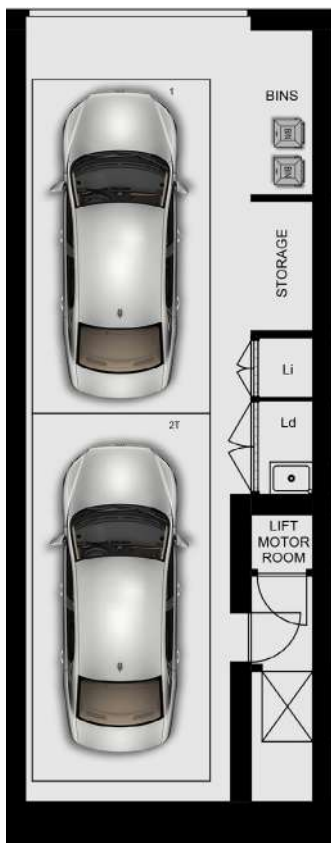
INTERNAL  
AREA  
247.0 m<sup>2</sup>  
26.59 SQ

EXTERNAL  
AREA  
42.0 m<sup>2</sup>  
4.52 SQ

TOTAL  
AREA  
289.0 m<sup>2</sup>  
31.11 SQ

**DISCLAIMER:** These plans are intended as a guide only. Window size and location may vary. Refer to level plans for window locations. Refer to contract for options and chattels inclusions. The dimensions and areas are approximate only and may not accurately represent the actual dimensions and areas of the apartments or the spaces within them and are subject to change without notice. In addition, locations of utilities may vary during construction and fittings and fixtures on these plans are for illustrative purposes only. The areas are generally measured in accordance with the Property Council of Australia method of measurement. Prospective purchasers must rely on their own enquiries and should refer to the Contract of Sale and its schedules for all matters to be included in the purchase price of the apartment, including plans, finishes, fixtures, fittings, appliances and other particulars of sale. Loose furniture and planters are not included. Extent of floor finishes may vary. External space and landscaping indicative only. Refer to level plans for further information.

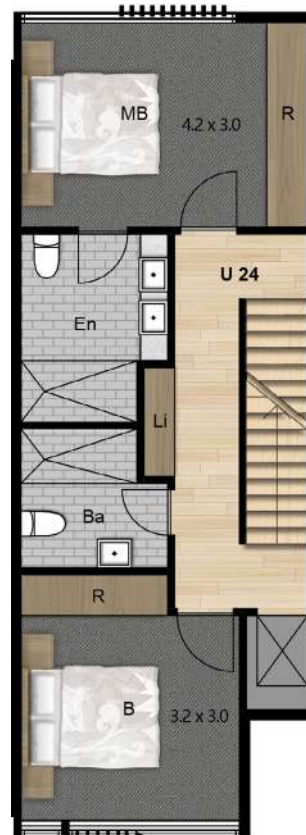




**GARAGE**



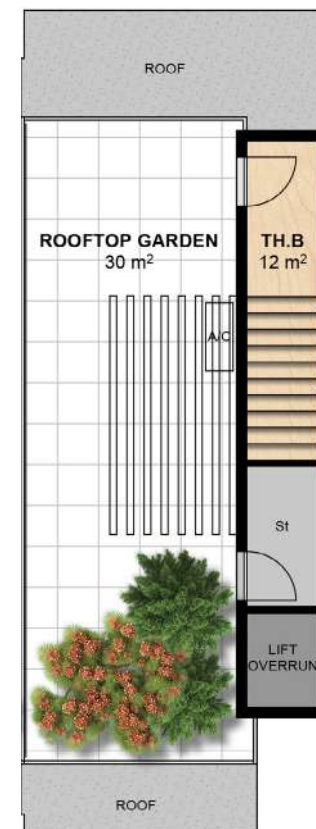
**GROUND FLOOR**



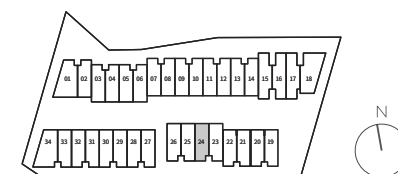
**FIRST FLOOR**



**SECOND FLOOR**



**ROOFTOP GARDEN**



# DONCASTER GARDENS

DWELLING  
**24**

**4**

**3.5**

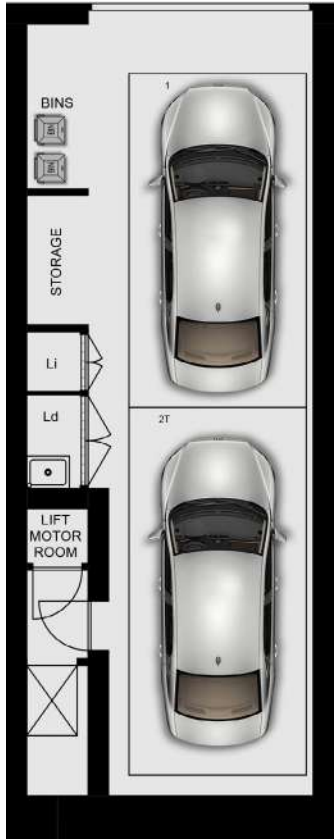
**2**

INTERNAL  
AREA  
**247.0 m<sup>2</sup>**  
**26.59 SQ**

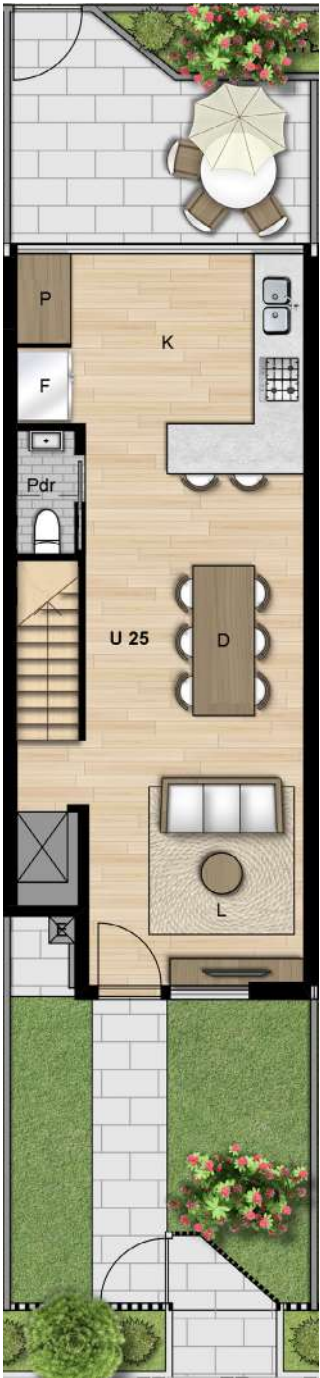
EXTERNAL  
AREA  
**42.0 m<sup>2</sup>**  
**4.52 SQ**

TOTAL  
AREA  
**289.0 m<sup>2</sup>**  
**31.11 SQ**

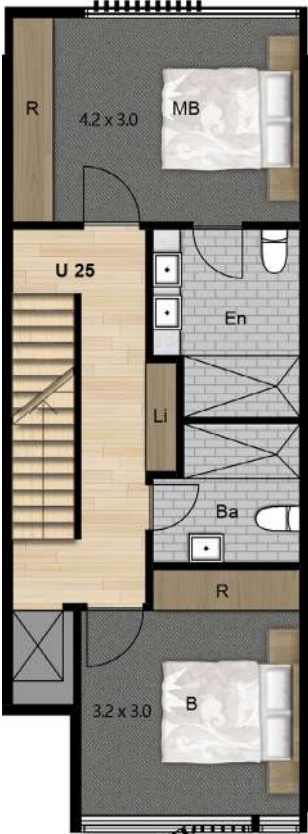
**DISCLAIMER:** These plans are intended as a guide only. Window size and location may vary. Refer to level plans for window locations. Refer to contract for options and chattels inclusions. The dimensions and areas are approximate only and may not accurately represent the actual dimensions and areas of the apartments or the spaces within them and are subject to change without notice. In addition, locations of utilities may vary during construction and fittings and fixtures on these plans are for illustrative purposes only. The areas are generally measured in accordance with the Property Council of Australia method of measurement. Prospective purchasers must rely on their own enquiries and should refer to the Contract of Sale and its schedules for all matters to be included in the purchase price of the apartment, including plans, finishes, fixtures, fittings, appliances and other particulars of sale. Loose furniture and planters are not included. Extent of floor finishes may vary. External space and landscaping indicative only. Refer to level plans for further information.



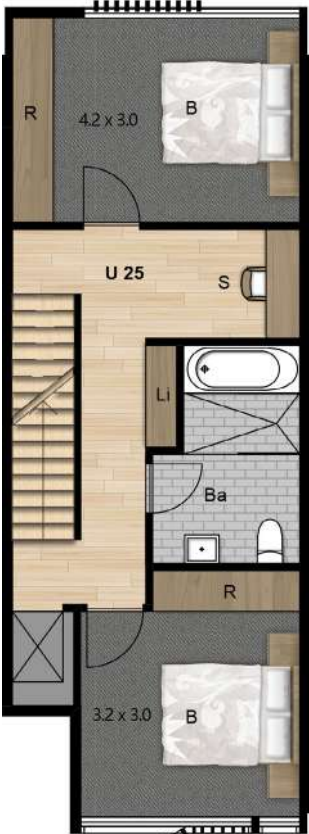
**GARAGE**



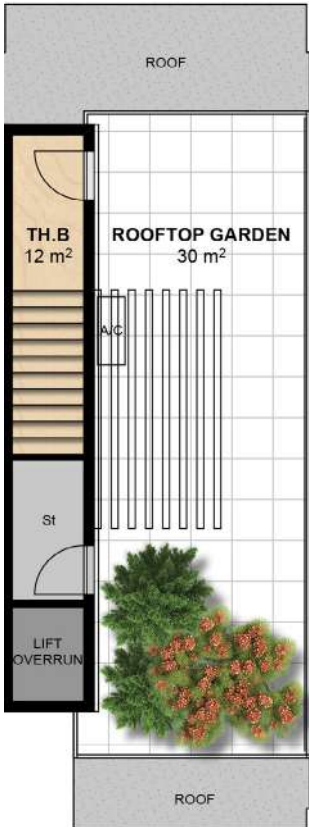
**GROUND FLOOR**



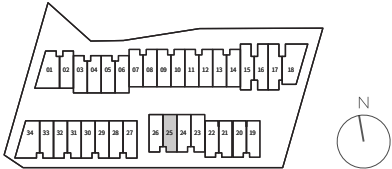
**FIRST FLOOR**



**SECOND FLOOR**



**ROOFTOP GARDEN**



# DONCASTER GARDENS

DWELLING  
**25**



4



3.5



2

INTERNAL  
AREA

247.0 m<sup>2</sup>  
26.59 SQ

EXTERNAL  
AREA

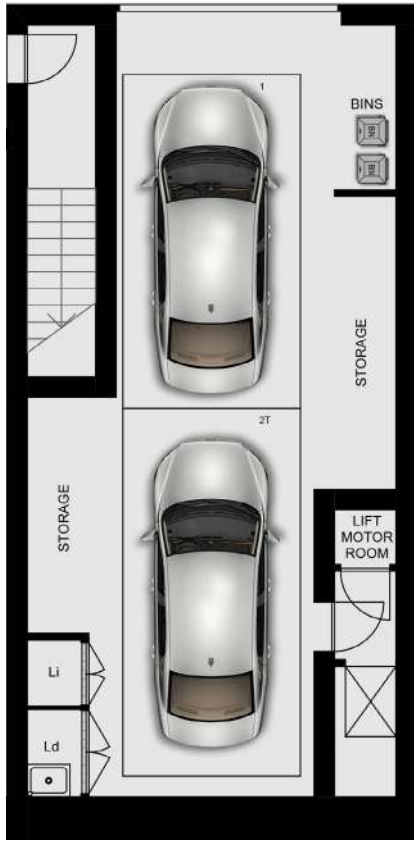
42.0 m<sup>2</sup>  
4.52 SQ

TOTAL  
AREA

289.0 m<sup>2</sup>  
31.11 SQ

**DISCLAIMER:** These plans are intended as a guide only. Window size and location may vary. Refer to level plans for window locations. Refer to contract for options and chattels inclusions. The dimensions and areas are approximate only and may not accurately represent the actual dimensions and areas of the apartments or the spaces within them and are subject to change without notice. In addition, locations of utilities may vary during construction and fittings and fixtures on these plans are for illustrative purposes only. The areas are generally measured in accordance with the Property Council of Australia method of measurement. Prospective purchasers must rely on their own enquiries and should refer to the Contract of Sale and its schedules for all matters to be included in the purchase price of the apartment, including plans, finishes, fixtures, fittings, appliances and other particulars of sale. Loose furniture and planters are not included. Extent of floor finishes may vary. External space and landscaping indicative only. Refer to level plans for further information.

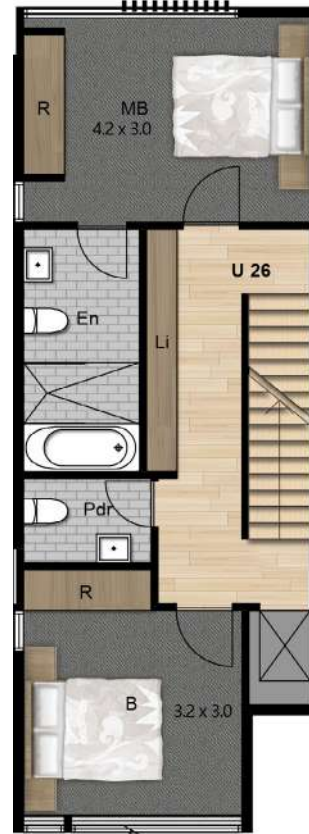




**GARAGE**



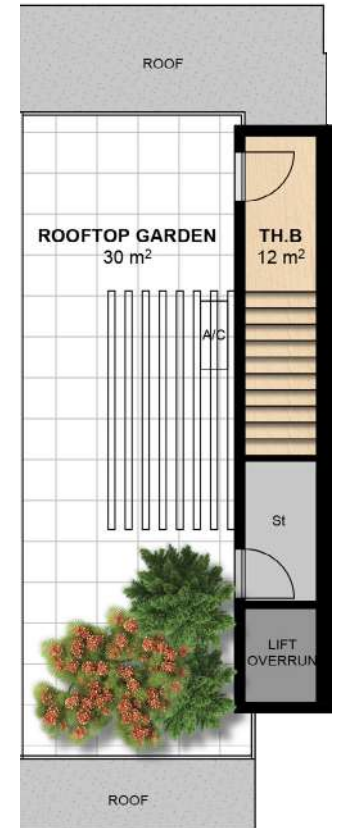
**GROUND FLOOR**



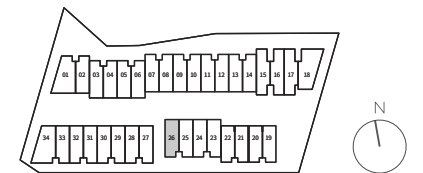
**FIRST FLOOR**



**SECOND FLOOR**



**ROOFTOP GARDEN**



# DONCASTER GARDENS

DWELLING  
**26**



**4**



**3.5**



**2**

INTERNAL  
AREA

**247.0 m<sup>2</sup>  
26.59 SQ**

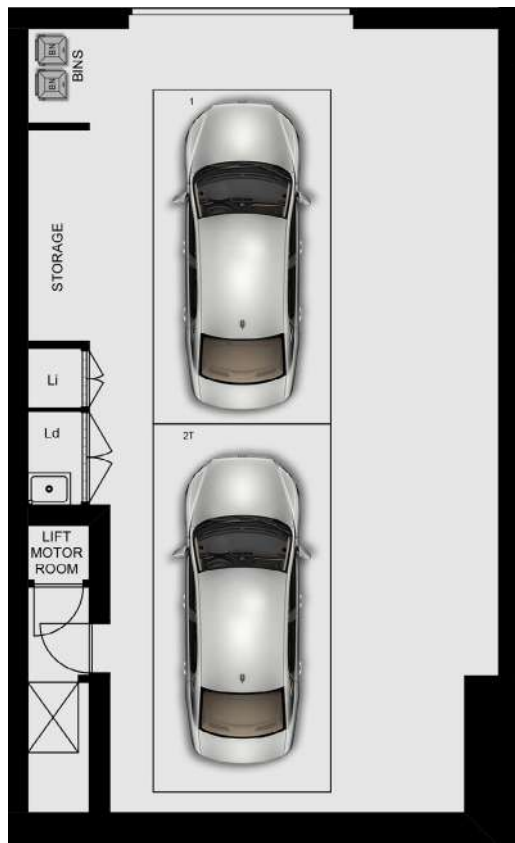
EXTERNAL  
AREA

**42.0 m<sup>2</sup>  
4.52 SQ**

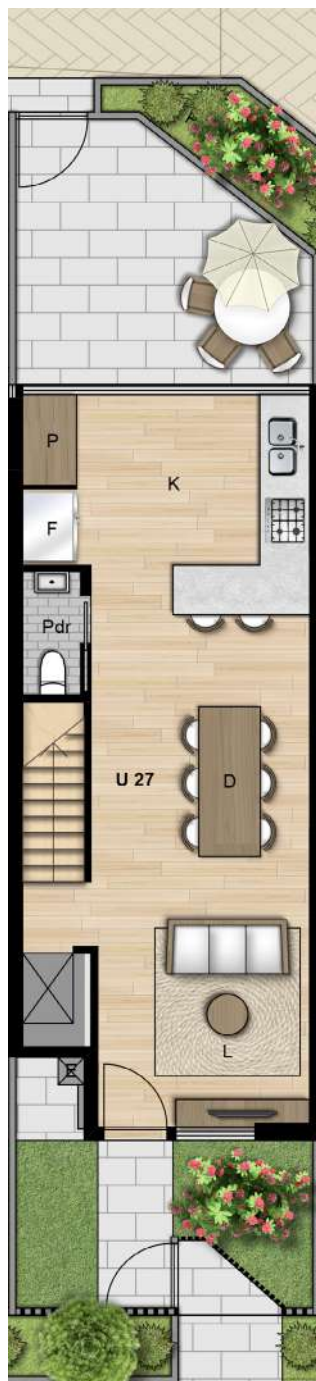
TOTAL  
AREA

**289.0 m<sup>2</sup>  
31.11 SQ**

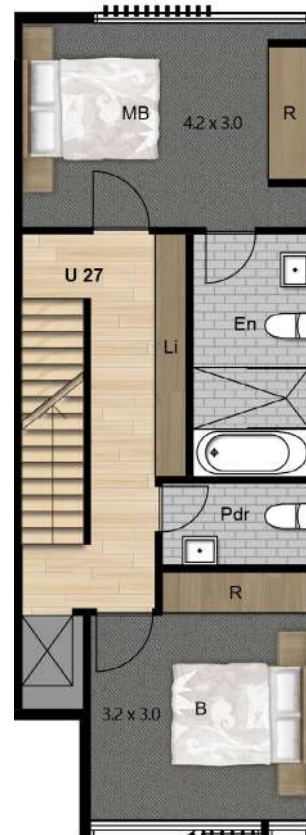
**DISCLAIMER:** These plans are intended as a guide only. Window size and location may vary. Refer to level plans for window locations. Refer to contract for options and chattels inclusions. The dimensions and areas are approximate only and may not accurately represent the actual dimensions and areas of the apartments or the spaces within them and are subject to change without notice. In addition, locations of utilities may vary during construction and fittings and fixtures on these plans are for illustrative purposes only. The areas are generally measured in accordance with the Property Council of Australia method of measurement. Prospective purchasers must rely on their own enquiries and should refer to the Contract of Sale and its schedules for all matters to be included in the purchase price of the apartment, including plans, finishes, fixtures, fittings, appliances and other particulars of sale. Loose furniture and planters are not included. Extent of floor finishes may vary. External space and landscaping indicative only. Refer to level plans for further information.



**GARAGE**



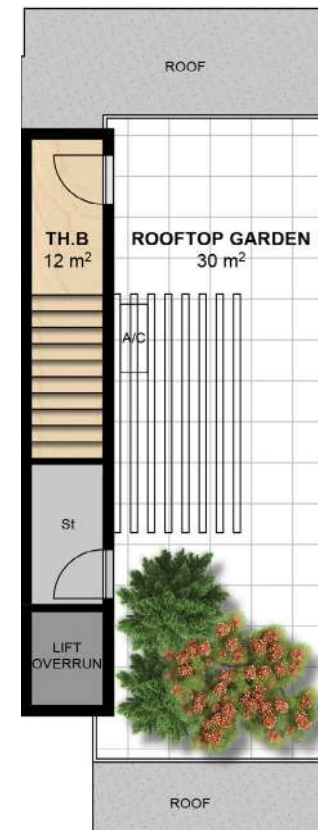
**GROUND FLOOR**



**FIRST FLOOR**



**SECOND FLOOR**



**ROOFTOP GARDEN**



# DONCASTER GARDENS

DWELLING  
**27**



4



3.5



2

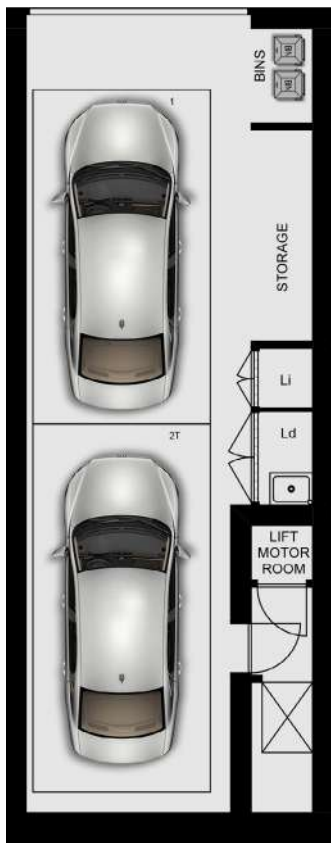
INTERNAL  
AREA  
247.0 m<sup>2</sup>  
26.59 SQ

EXTERNAL  
AREA  
42.0 m<sup>2</sup>  
4.52 SQ

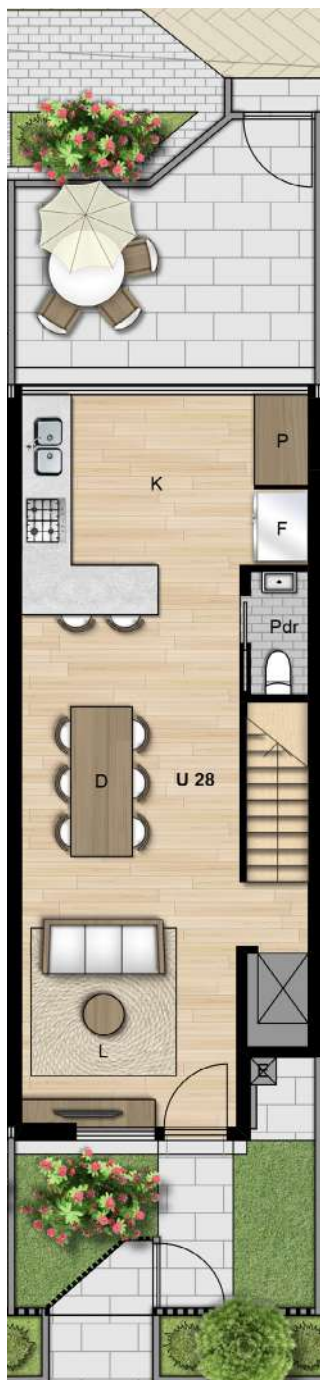
TOTAL  
AREA  
289.0 m<sup>2</sup>  
31.11 SQ

**DISCLAIMER:** These plans are intended as a guide only. Window size and location may vary. Refer to level plans for window locations. Refer to contract for options and chattels inclusions. The dimensions and areas are approximate only and may not accurately represent the actual dimensions and areas of the apartments or the spaces within them and are subject to change without notice. In addition, locations of utilities may vary during construction and fittings and fixtures on these plans are for illustrative purposes only. The areas are generally measured in accordance with the Property Council of Australia method of measurement. Prospective purchasers must rely on their own enquiries and should refer to the Contract of Sale and its schedules for all matters to be included in the purchase price of the apartment, including plans, finishes, fixtures, fittings, appliances and other particulars of sale. Loose furniture and planters are not included. Extent of floor finishes may vary. External space and landscaping indicative only. Refer to level plans for further information.

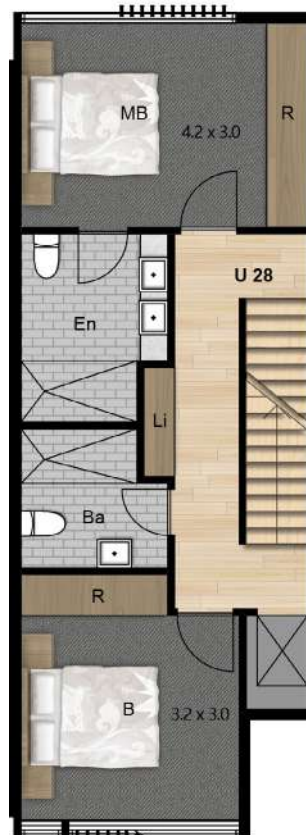




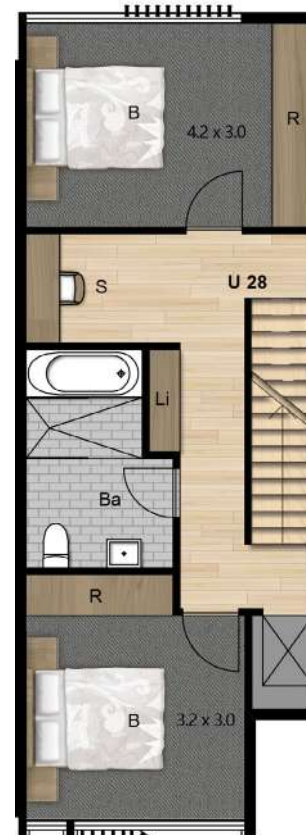
**GARAGE**



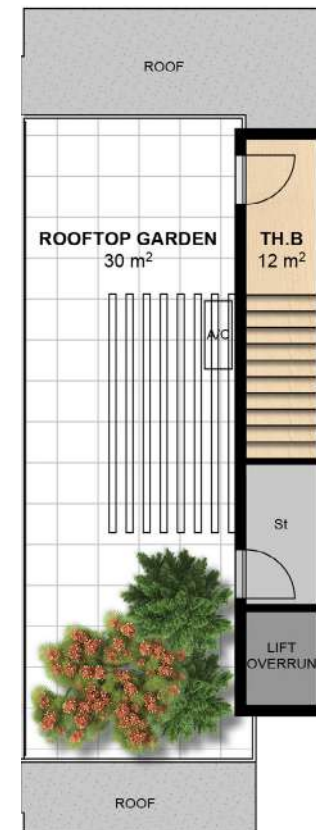
**GROUND FLOOR**



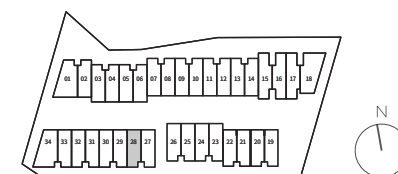
**FIRST FLOOR**



**SECOND FLOOR**



**ROOFTOP GARDEN**



# DONCASTER GARDENS

DWELLING  
**28**

**4**

**3.5**

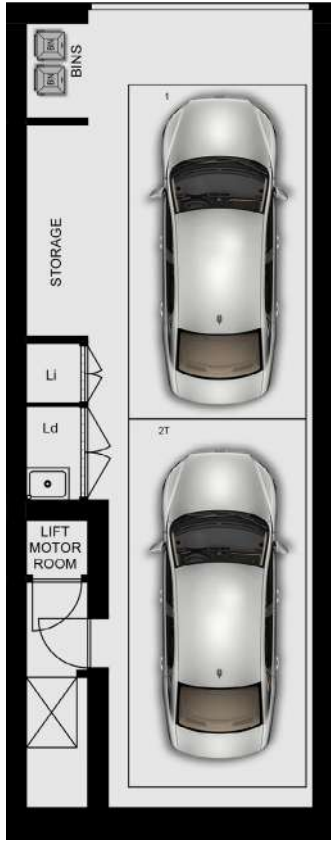
**2**

INTERNAL  
AREA  
**247.0 m<sup>2</sup>**  
**26.59 SQ**

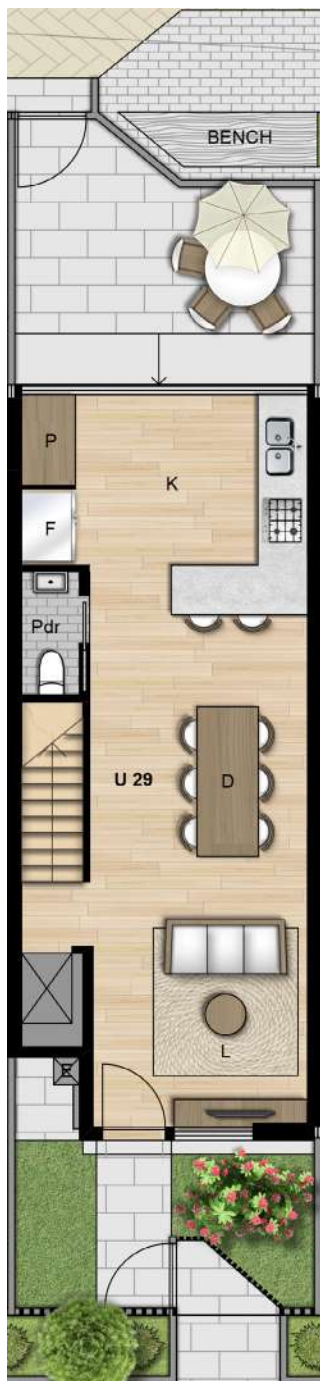
EXTERNAL  
AREA  
**41.0 m<sup>2</sup>**  
**4.41 SQ**

TOTAL  
AREA  
**288.0 m<sup>2</sup>**  
**31.00 SQ**

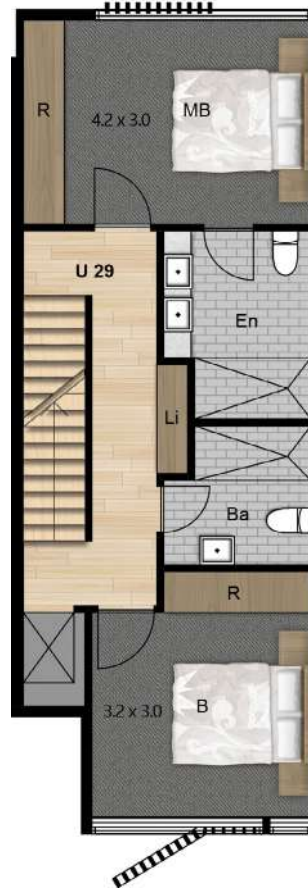
**DISCLAIMER:** These plans are intended as a guide only. Window size and location may vary. Refer to level plans for window locations. Refer to contract for options and chattels inclusions. The dimensions and areas are approximate only and may not accurately represent the actual dimensions and areas of the apartments or the spaces within them and are subject to change without notice. In addition, locations of utilities may vary during construction and fittings and fixtures on these plans are for illustrative purposes only. The areas are generally measured in accordance with the Property Council of Australia method of measurement. Prospective purchasers must rely on their own enquiries and should refer to the Contract of Sale and its schedules for all matters to be included in the purchase price of the apartment, including plans, finishes, fixtures, fittings, appliances and other particulars of sale. Loose furniture and planters are not included. Extent of floor finishes may vary. External space and landscaping indicative only. Refer to level plans for further information.



**GARAGE**



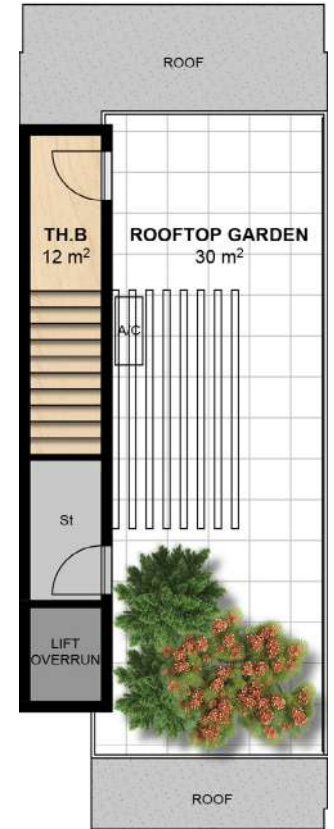
**GROUND FLOOR**



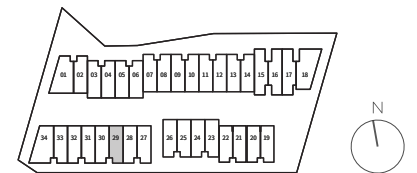
**FIRST FLOOR**



**SECOND FLOOR**



**ROOFTOP GARDEN**



# DONCASTER GARDENS

DWELLING  
**29**



4



3.5



2

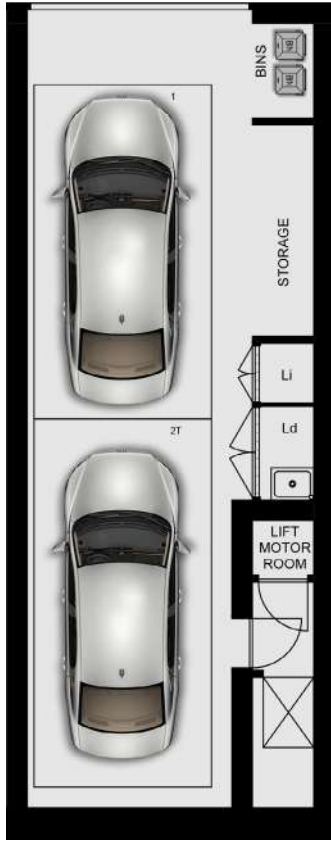
INTERNAL  
AREA  
247.0 m<sup>2</sup>  
26.59 SQ

EXTERNAL  
AREA  
41.0 m<sup>2</sup>  
4.41 SQ

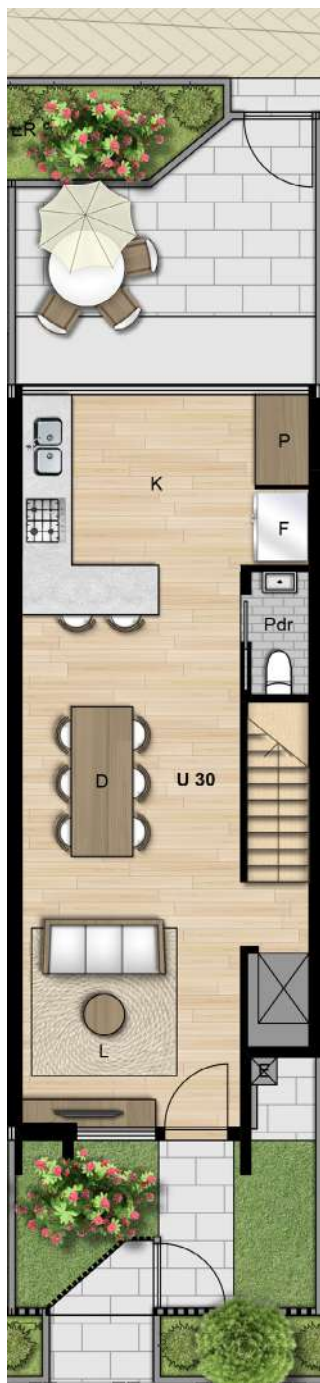
TOTAL  
AREA  
288.0 m<sup>2</sup>  
31.00 SQ

**DISCLAIMER:** These plans are intended as a guide only. Window size and location may vary. Refer to level plans for window locations. Refer to contract for options and chattels inclusions. The dimensions and areas are approximate only and may not accurately represent the actual dimensions and areas of the apartments or the spaces within them and are subject to change without notice. In addition, locations of utilities may vary during construction and fittings and fixtures on these plans are for illustrative purposes only. The areas are generally measured in accordance with the Property Council of Australia method of measurement. Prospective purchasers must rely on their own enquiries and should refer to the Contract of Sale and its schedules for all matters to be included in the purchase price of the apartment, including plans, finishes, fixtures, fittings, appliances and other particulars of sale. Loose furniture and planters are not included. Extent of floor finishes may vary. External space and landscaping indicative only. Refer to level plans for further information.

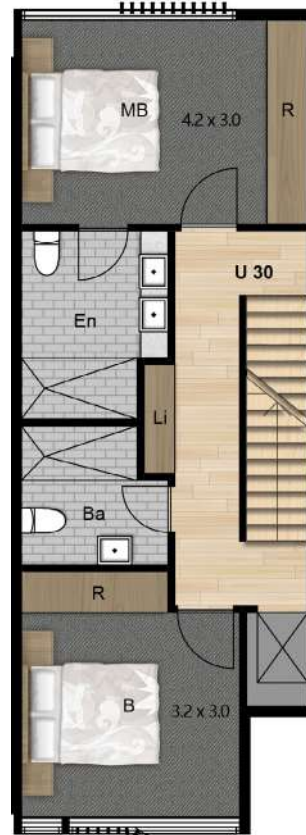




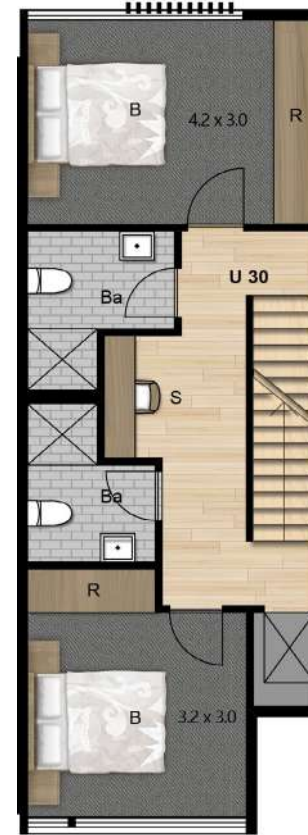
**GARAGE**



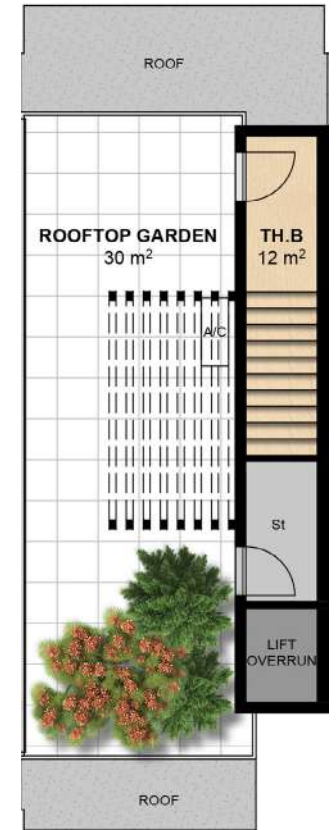
**GROUND FLOOR**



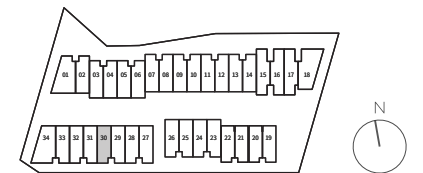
**FIRST FLOOR**



**SECOND FLOOR**



**ROOFTOP GARDEN**



# DONCASTER GARDENS

DWELLING  
**30**



**4**



**3.5**



**2**

INTERNAL  
AREA

**247.0 m<sup>2</sup>  
26.59 SQ**

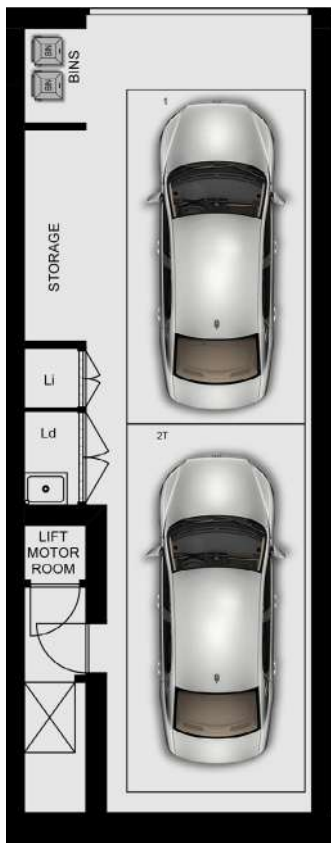
EXTERNAL  
AREA

**41.0 m<sup>2</sup>  
4.41 SQ**

TOTAL  
AREA

**288.0 m<sup>2</sup>  
31.00 SQ**

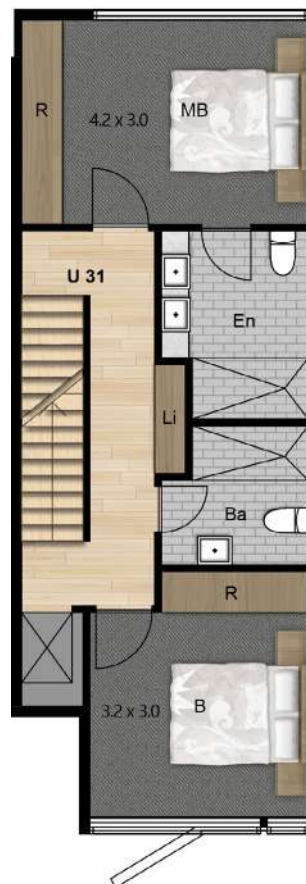
**DISCLAIMER:** These plans are intended as a guide only. Window size and location may vary. Refer to level plans for window locations. Refer to contract for options and chattels inclusions. The dimensions and areas are approximate only and may not accurately represent the actual dimensions and areas of the apartments or the spaces within them and are subject to change without notice. In addition, locations of utilities may vary during construction and fittings and fixtures on these plans are for illustrative purposes only. The areas are generally measured in accordance with the Property Council of Australia method of measurement. Prospective purchasers must rely on their own enquiries and should refer to the Contract of Sale and its schedules for all matters to be included in the purchase price of the apartment, including plans, finishes, fixtures, fittings, appliances and other particulars of sale. Loose furniture and planters are not included. Extent of floor finishes may vary. External space and landscaping indicative only. Refer to level plans for further information.



**GARAGE**



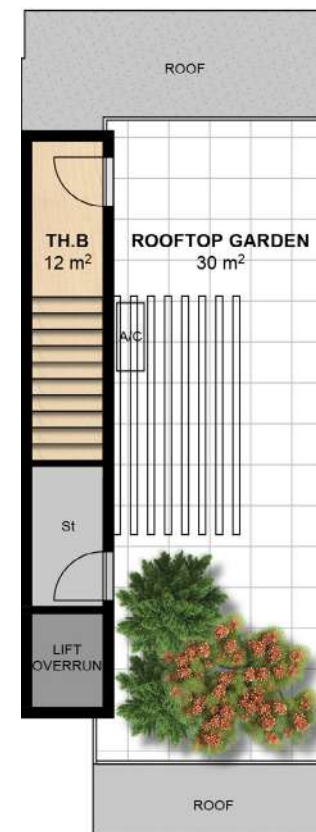
**GROUND FLOOR**



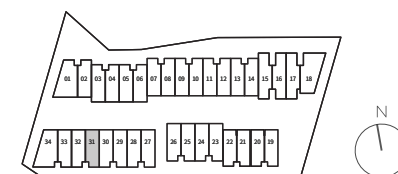
**FIRST FLOOR**



**SECOND FLOOR**



**ROOFTOP GARDEN**



# DONCASTER GARDENS

DWELLING  
**31**

4

3.5

2

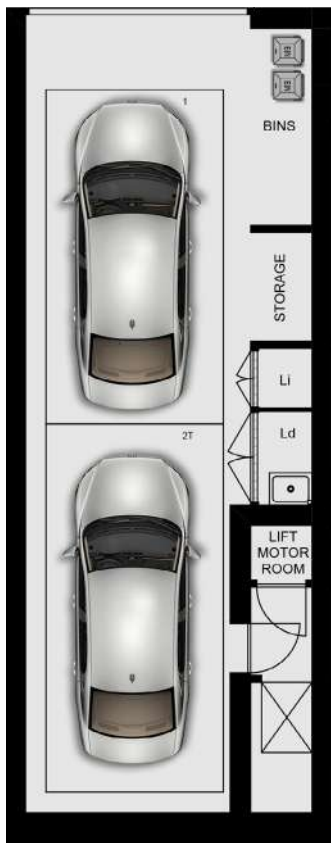
INTERNAL  
AREA  
247.0 m<sup>2</sup>  
26.59 SQ

EXTERNAL  
AREA  
41.0 m<sup>2</sup>  
4.41 SQ

TOTAL  
AREA  
288.0 m<sup>2</sup>  
31.00 SQ

**DISCLAIMER:** These plans are intended as a guide only. Window size and location may vary. Refer to level plans for window locations. Refer to contract for options and chattels inclusions. The dimensions and areas are approximate only and may not accurately represent the actual dimensions and areas of the apartments or the spaces within them and are subject to change without notice. In addition, locations of utilities may vary during construction and fittings and fixtures on these plans are for illustrative purposes only. The areas are generally measured in accordance with the Property Council of Australia method of measurement. Prospective purchasers must rely on their own enquiries and should refer to the Contract of Sale and its schedules for all matters to be included in the purchase price of the apartment, including plans, finishes, fixtures, fittings, appliances and other particulars of sale. Loose furniture and planters are not included. Extent of floor finishes may vary. External space and landscaping indicative only. Refer to level plans for further information.

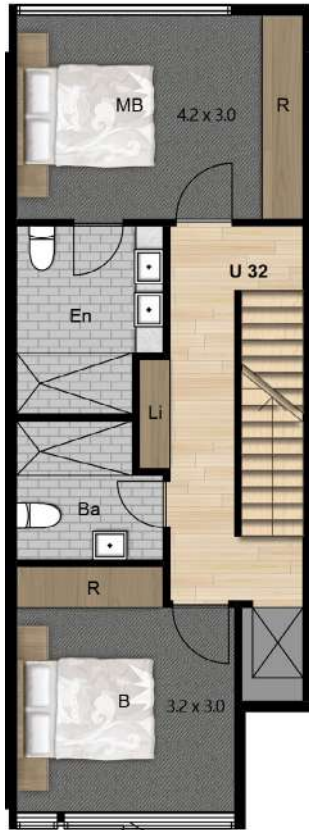




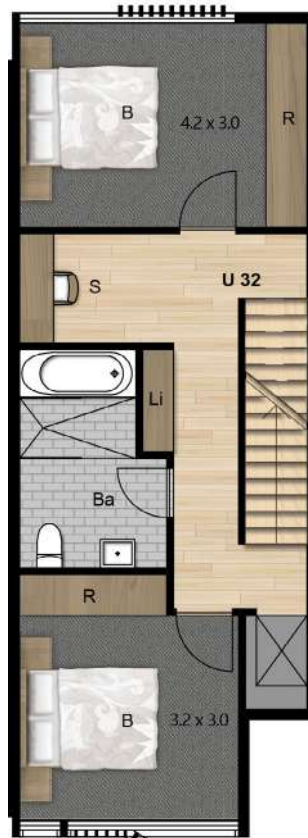
**GARAGE**



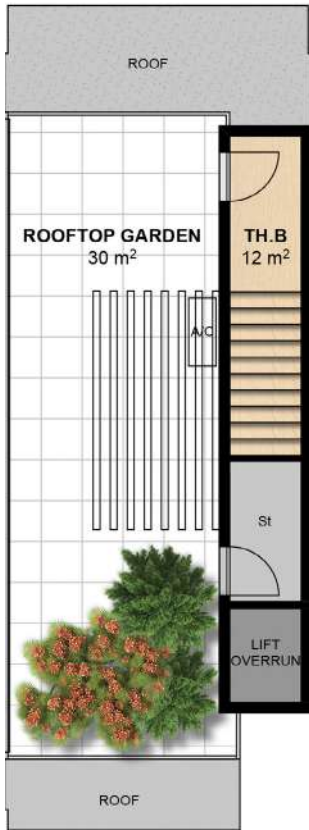
**GROUND FLOOR**



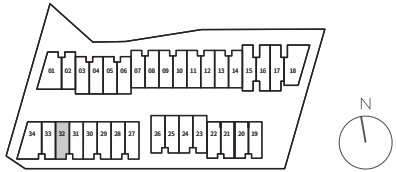
**FIRST FLOOR**



**SECOND FLOOR**



**ROOFTOP GARDEN**



# DONCASTER GARDENS

DWELLING  
**32**



4



3.5



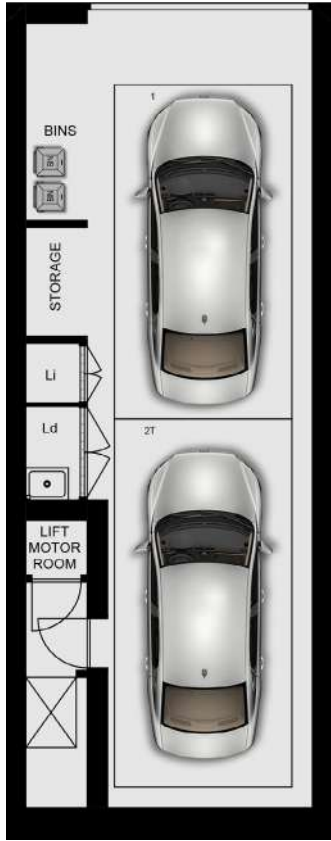
2

INTERNAL  
AREA  
247.0 m<sup>2</sup>  
26.59 SQ

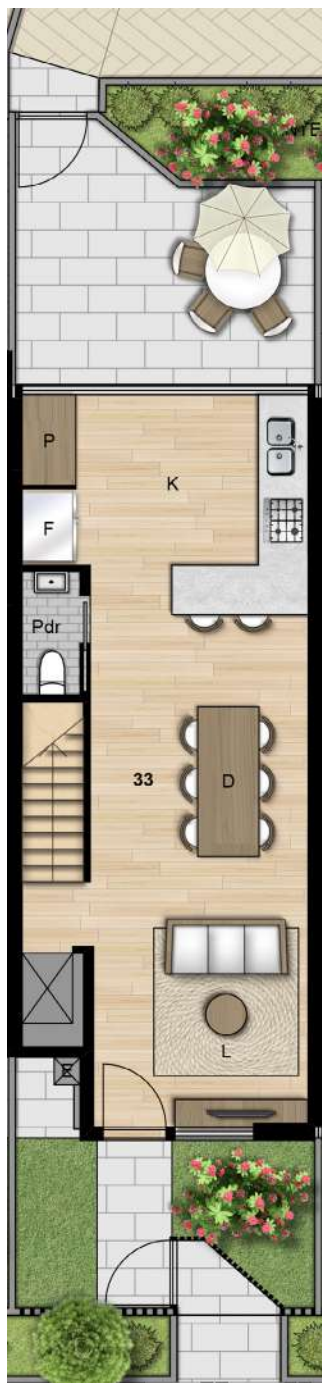
EXTERNAL  
AREA  
41.0 m<sup>2</sup>  
4.41 SQ

TOTAL  
AREA  
288.0 m<sup>2</sup>  
31.00 SQ

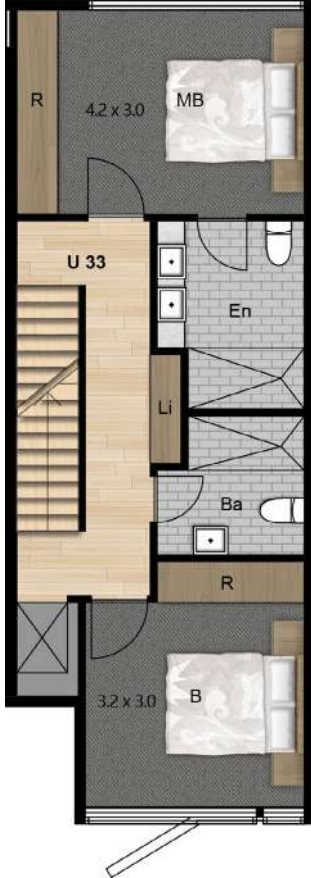
**DISCLAIMER:** These plans are intended as a guide only. Window size and location may vary. Refer to level plans for window locations. Refer to contract for options and chattels inclusions. The dimensions and areas are approximate only and may not accurately represent the actual dimensions and areas of the apartments or the spaces within them and are subject to change without notice. In addition, locations of utilities may vary during construction and fittings and fixtures on these plans are for illustrative purposes only. The areas are generally measured in accordance with the Property Council of Australia method of measurement. Prospective purchasers must rely on their own enquiries and should refer to the Contract of Sale and its schedules for all matters to be included in the purchase price of the apartment, including plans, finishes, fixtures, fittings, appliances and other particulars of sale. Loose furniture and planters are not included. Extent of floor finishes may vary. External space and landscaping indicative only. Refer to level plans for further information.



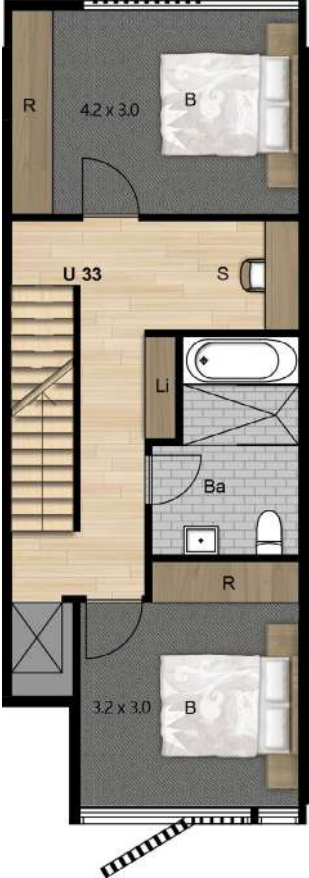
**GARAGE**



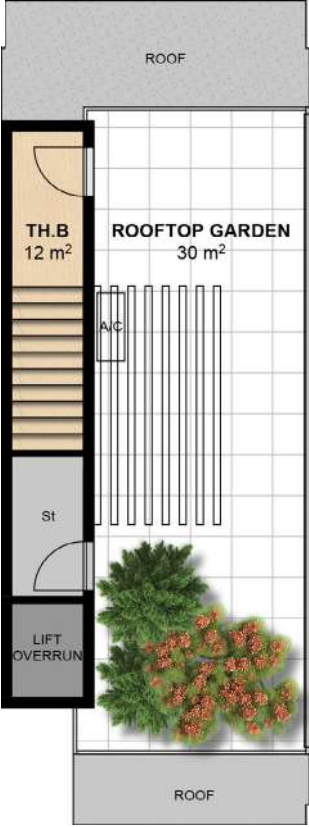
**GROUND FLOOR**



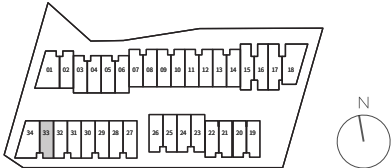
**FIRST FLOOR**



**SECOND FLOOR**



**ROOFTOP GARDEN**



# DONCASTER GARDENS

DWELLING  
**33**



4



3.5



2

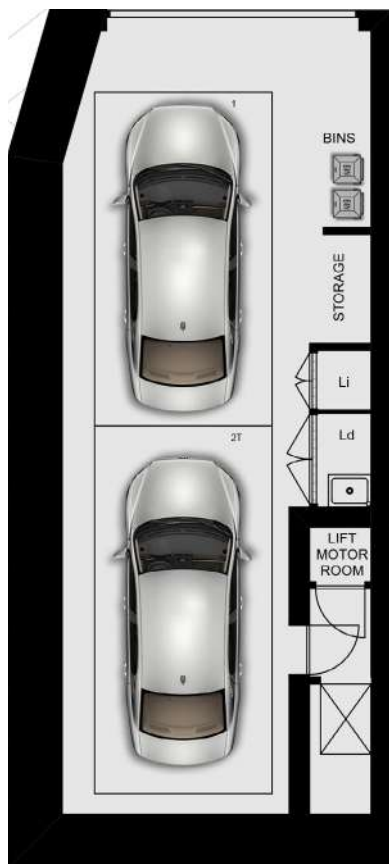
INTERNAL  
AREA  
247.0 m<sup>2</sup>  
26.59 SQ

EXTERNAL  
AREA  
41.0 m<sup>2</sup>  
4.41 SQ

TOTAL  
AREA  
288.0 m<sup>2</sup>  
31.00 SQ

**DISCLAIMER:** These plans are intended as a guide only. Window size and location may vary. Refer to level plans for window locations. Refer to contract for options and chattels inclusions. The dimensions and areas are approximate only and may not accurately represent the actual dimensions and areas of the apartments or the spaces within them and are subject to change without notice. In addition, locations of utilities may vary during construction and fittings and fixtures on these plans are for illustrative purposes only. The areas are generally measured in accordance with the Property Council of Australia method of measurement. Prospective purchasers must rely on their own enquiries and should refer to the Contract of Sale and its schedules for all matters to be included in the purchase price of the apartment, including plans, finishes, fixtures, fittings, appliances and other particulars of sale. Loose furniture and planters are not included. Extent of floor finishes may vary. External space and landscaping indicative only. Refer to level plans for further information.

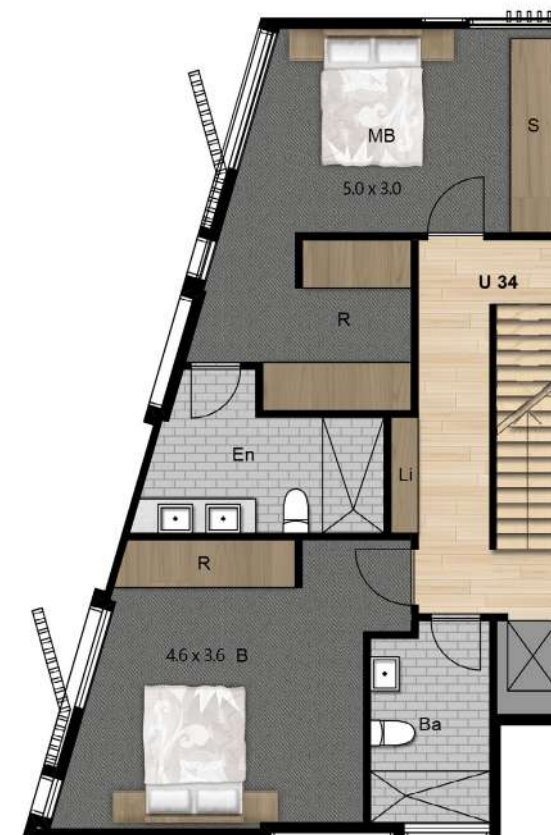




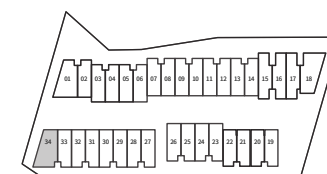
**GARAGE**



**GROUND FLOOR**



**FIRST FLOOR**



# DONCASTER GARDENS

DWELLING  
**34**

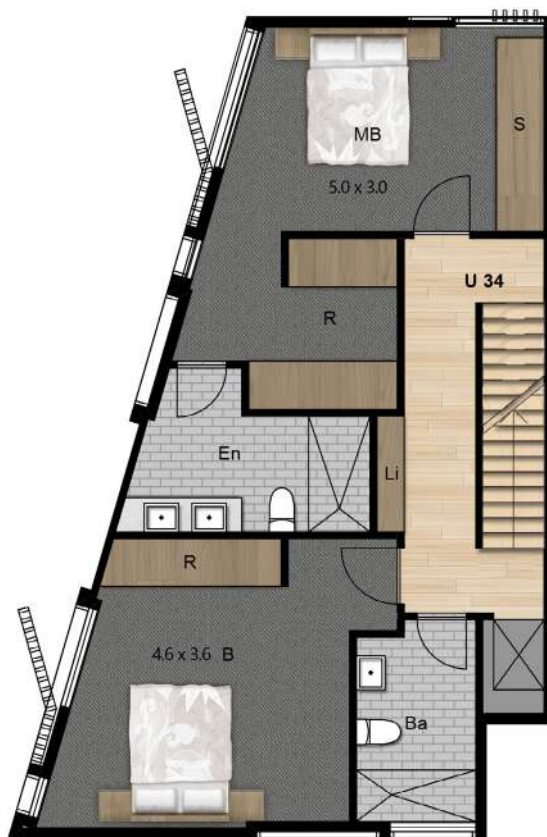


INTERNAL  
AREA  
317.0 m<sup>2</sup>  
34.12 SQ

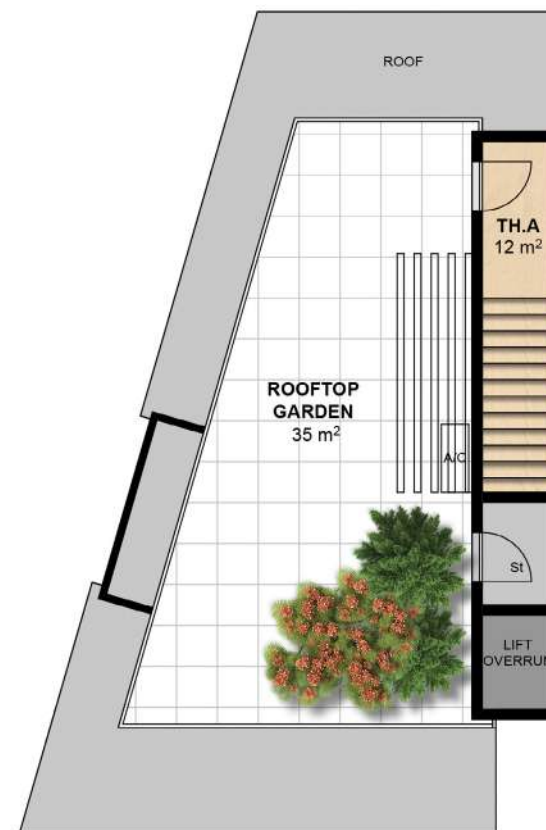
EXTERNAL  
AREA  
60.0 m<sup>2</sup>  
6.46 SQ

TOTAL  
AREA  
377.0 m<sup>2</sup>  
40.58 SQ

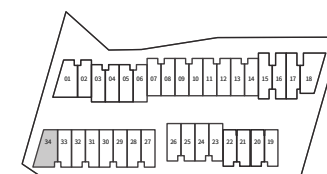
**DISCLAIMER:** These plans are intended as a guide only. Window size and location may vary. Refer to level plans for window locations. Refer to contract for options and chattels inclusions. The dimensions and areas are approximate only and may not accurately represent the actual dimensions and areas of the apartments or the spaces within them and are subject to change without notice. In addition, locations of utilities may vary during construction and fittings and fixtures on these plans are for illustrative purposes only. The areas are generally measured in accordance with the Property Council of Australia method of measurement. Prospective purchasers must rely on their own enquiries and should refer to the Contract of Sale and its schedules for all matters to be included in the purchase price of the apartment, including plans, finishes, fixtures, fittings, appliances and other particulars of sale. Loose furniture and planters are not included. Extent of floor finishes may vary. External space and landscaping indicative only. Refer to level plans for further information.



**SECOND FLOOR**



**ROOFTOP GARDEN**



# **DONCASTER GARDENS**

DWELLING  
**34**



INTERNAL  
AREA  
**317.0 m<sup>2</sup>  
34.12 SQ**

EXTERNAL  
AREA  
**60.0 m<sup>2</sup>  
6.46 SQ**

TOTAL  
AREA  
**377.0 m<sup>2</sup>  
40.58 SQ**

**DISCLAIMER:** These plans are intended as a guide only. Window size and location may vary. Refer to level plans for window locations. Refer to contract for options and chattels inclusions. The dimensions and areas are approximate only and may not accurately represent the actual dimensions and areas of the apartments or the spaces within them and are subject to change without notice. In addition, locations of utilities may vary during construction and fittings and fixtures on these plans are for illustrative purposes only. The areas are generally measured in accordance with the Property Council of Australia method of measurement. Prospective purchasers must rely on their own enquiries and should refer to the Contract of Sale and its schedules for all matters to be included in the purchase price of the apartment, including plans, finishes, fixtures, fittings, appliances and other particulars of sale. Loose furniture and planters are not included. Extent of floor finishes may vary. External space and landscaping indicative only. Refer to level plans for further information.



# **DONCASTER**

---

# **G A R D E N S**

**142-146 Andersons Creek Road  
Doncaster East VIC 3109**