



# FLOOR PLAN

## DONCASTER GARDENS

142-146 Andersons Creek Road  
Doncaster East VIC 3109









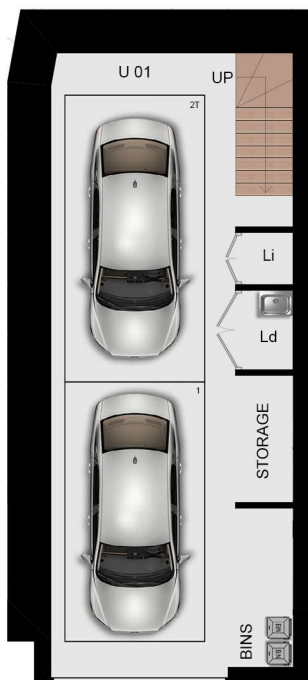
**BASEMENT PLAN**

# DONCASTER GARDENS

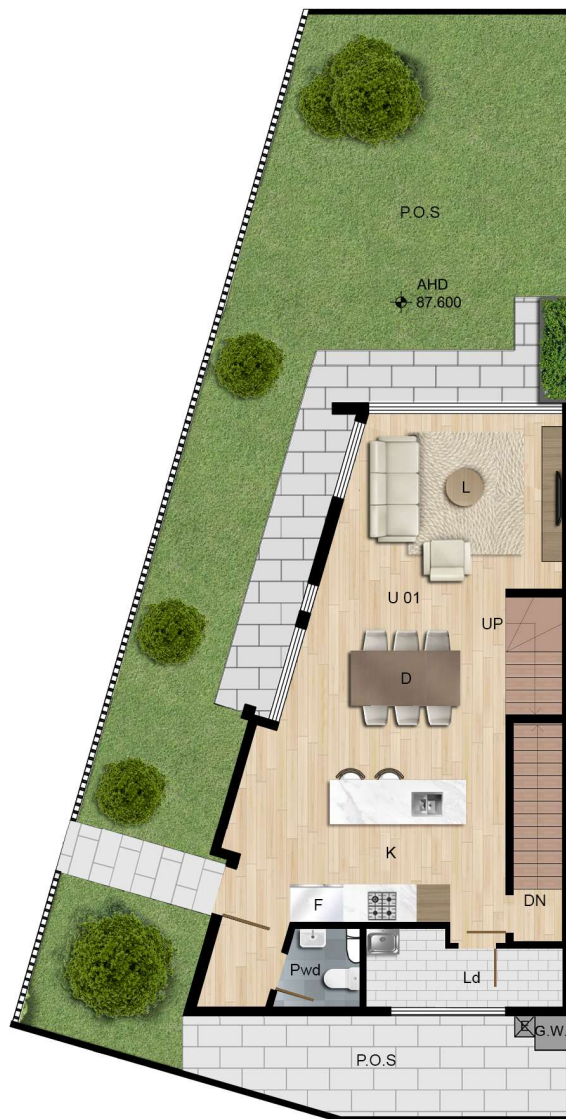
L	Living	F	Fridge	St	Storage
D	Dining	P	Pantry	LI	Linen
K	Kitchen	Pwd	Powder	B	Bed
R	Robe	S	Study	Ba	Bath
En	Ensuite	MB	Master Bed	Ld	Laundry
G.W	GAS & WATER meter	E	Electricity meter	FIP	Fire Indicator Panel

**DISCLAIMER:** These plans are intended as a guide only. Window size and location may vary. Refer to level plans for window locations. Refer to contract for options and chattels inclusions. The dimensions and areas are approximate only and may not accurately represent the actual dimensions and areas of the apartments or the spaces within them and are subject to change without notice. In addition, locations of utilities may vary during construction and fittings and fixtures on these plans are for illustrative purposes only. The areas are generally measured in accordance with the Property Council of Australia method of measurement. Prospective purchasers must rely on their own enquiries and should refer to the contract of sales and its schedules for all matters to be included in the purchase price of the apartment, including plans, finishes, fixtures, fitting, appliances and other particulars of sale. Loose furniture and planters are not included. Extent of the floor finishes may vary. External space and landscaping indicative only. Refer to level plans for further information.

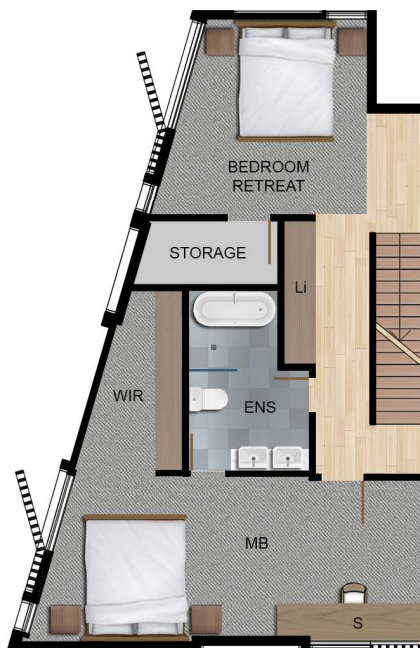




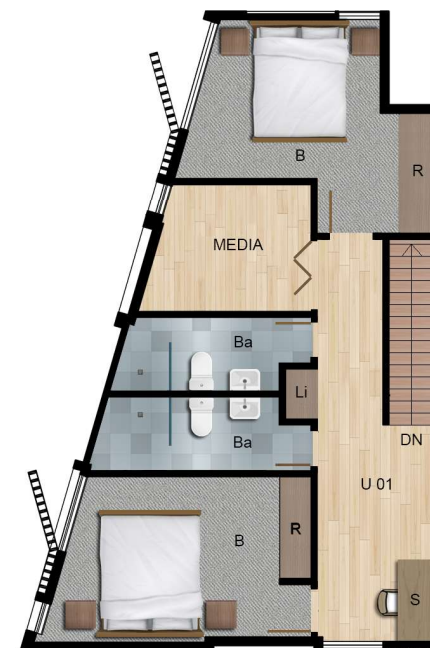
GARAGE



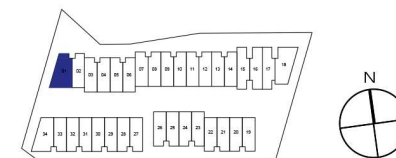
GROUND FLOOR - OPTION



FIRST FLOOR - OPTION



SECOND FLOOR - OPTION



# DONCASTER GARDENS

DWELLING  
**01**



4



3.5



2

INTERNAL  
AREA

281.80 m<sup>2</sup>

EXTERNAL  
AREA

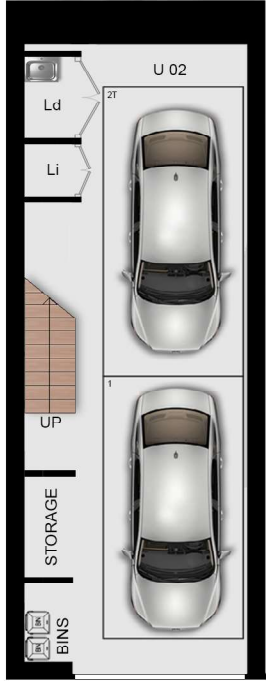
96.85 m<sup>2</sup>

TOTAL  
AREA

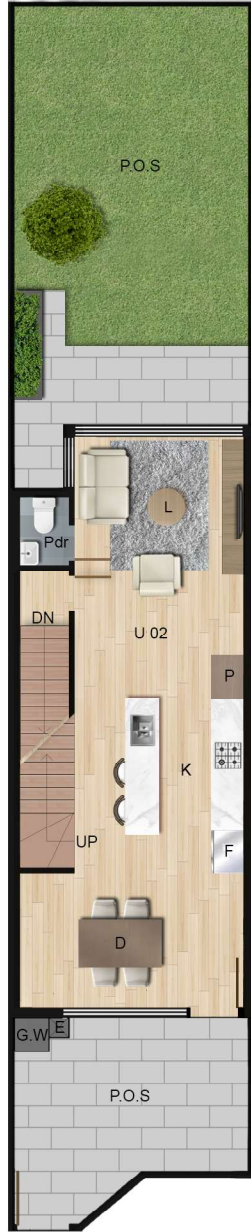
378.65 m<sup>2</sup>

DISCLAIMER: This plans are intended as a guide only. Window size and location may vary. Refer to level plans for window locations. Refer to contract for options and chattels inclusions. The dimensions and areas are approximate only and may not accurately represent the actual dimensions and areas of the apartments or the spaces within them and are subject to change without notice. In addition, locations of utilities may vary during construction and fittings and fixtures on these plan are for illustrative purposes only. The areas are generally measured in accordance with the Property Council of Australia method of measurement. Prospective purchasers must rely on their own enquiries and should refer to the contract of sales and its schedules for all matters to be included in the purchase price of the apartment, including plans, finishes, fixtures, fitting, appliances and other particulars of sale. Loose furniture and planters are not included. Extent of the floor finishes may vary. External space and landscaping indicative only. Refer to level plans for further information.

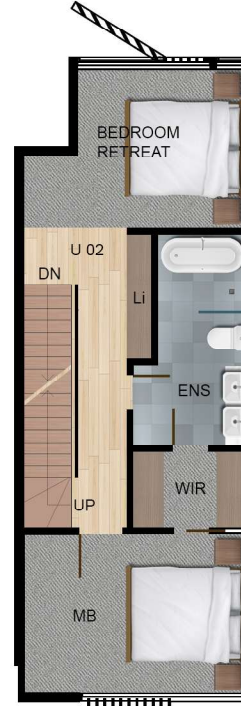




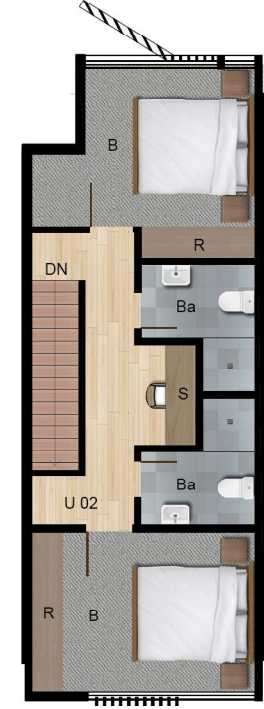
GARAGE



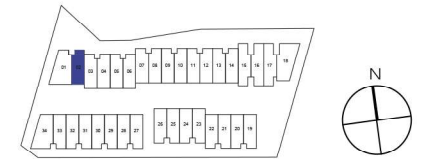
GROUND FLOOR - OPTION



FIRST FLOOR - OPTION



SECOND FLOOR - OPTION



# DONCASTER GARDENS

DWELLING  
**02**



4



3.5



2

INTERNAL  
AREA

210.56 m<sup>2</sup>

EXTERNAL  
AREA

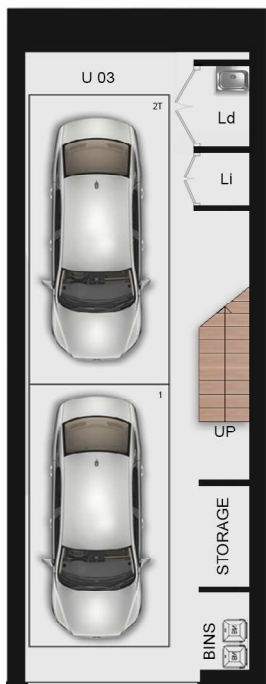
52.38 m<sup>2</sup>

TOTAL  
AREA

262.94 m<sup>2</sup>

DISCLAIMER: This plans are intended as a guide only. Window size and location may vary. Refer to level plans for window locations. Refer to contract for options and chattels inclusions. The dimensions and areas are approximate only and may not accurately represent the actual dimensions and areas of the apartments or the spaces within them and are subject to change without notice. In addition, locations of utilities may vary during construction and fittings and fixtures on these plan are for illustrative purposes only. The areas are generally measured in accordance with the Property Council of Australia method of measurement. Prospective purchasers must rely on their own enquiries and should refer to the contract of sales and its schedules for all matters to be included in the purchase price of the apartment, including plans, finishes, fixtures, fitting, appliances and other particulars of sale. Loose furniture and planters are not included. Extent of the floor finishes may vary. External space and landscaping indicative only. Refer to level plans for further information.

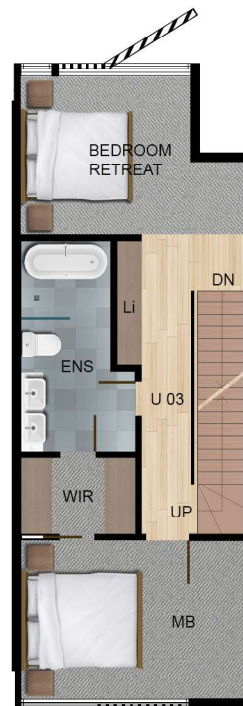




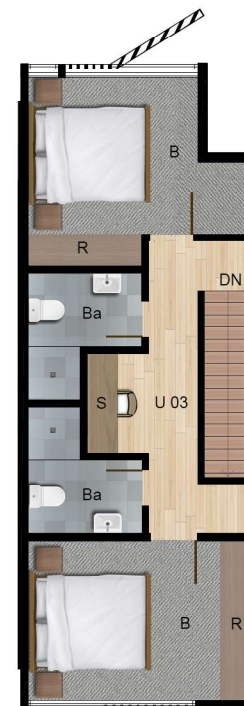
GARAGE



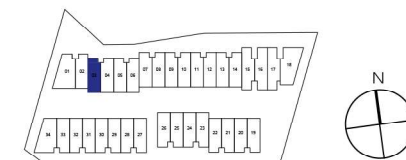
GROUND FLOOR - OPTION



FIRST FLOOR - OPTION



SECOND FLOOR - OPTION



# DONCASTER GARDENS

DWELLING  
**03**



4



3.5



2

INTERNAL  
AREA

210.56 m<sup>2</sup>

EXTERNAL  
AREA

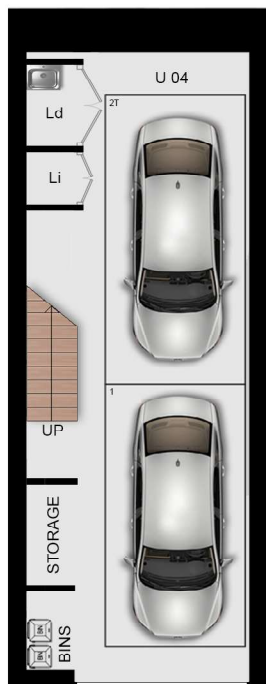
46.45 m<sup>2</sup>

TOTAL  
AREA

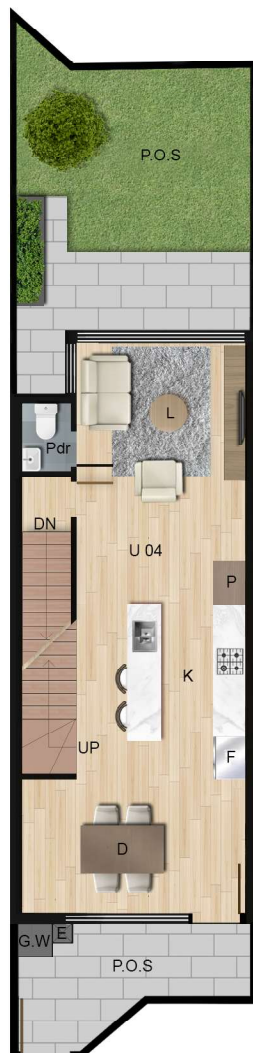
257.01 m<sup>2</sup>

DISCLAIMER: This plans are intended as a guide only. Window size and location may vary. Refer to level plans for window locations. Refer to contract for options and chattels inclusions. The dimensions and areas are approximate only and may not accurately represent the actual dimensions and areas of the apartments or the spaces within them and are subject to change without notice. In addition, locations of utilities may vary during construction and fittings and fixtures on these plan are for illustrative purposes only. The areas are generally measured in accordance with the Property Council of Australia method of measurement. Prospective purchasers must rely on their own enquiries and should refer to the contract of sales and its schedules for all matters to be included in the purchase price of the apartment, including plans, finishes, fixtures, fitting, appliances and other particulars of sale. Loose furniture and planters are not included. Extent of the floor finishes may vary. External space and landscaping indicative only. Refer to level plans for further information.

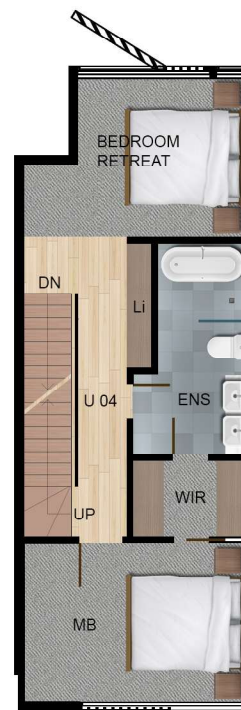




GARAGE



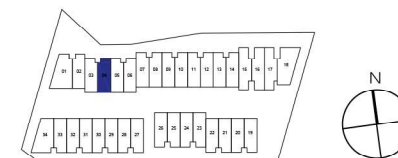
GROUND FLOOR - OPTION



FIRST FLOOR - OPTION



SECOND FLOOR - OPTION



# DONCASTER GARDENS

DWELLING  
**04**



4



3.5



2

INTERNAL  
AREA

210.56 m<sup>2</sup>

EXTERNAL  
AREA

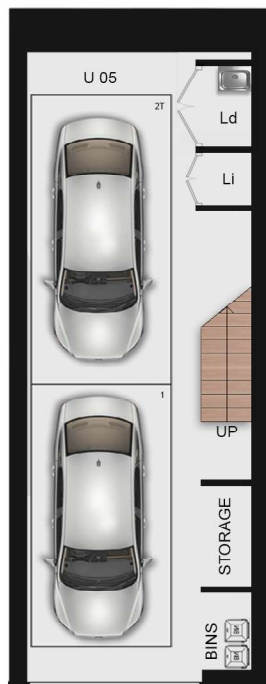
33.9 m<sup>2</sup>

TOTAL  
AREA

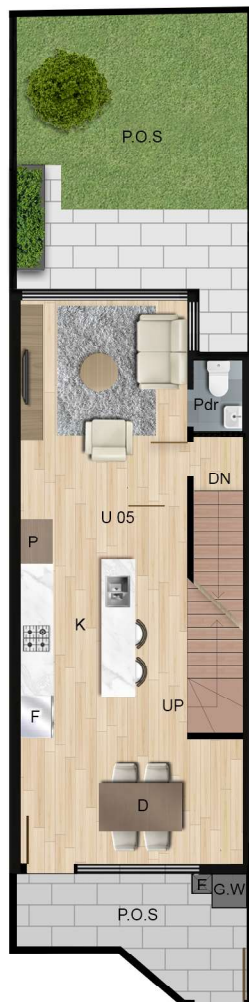
244.46 m<sup>2</sup>

DISCLAIMER: This plans are intended as a guide only. Window size and location may vary. Refer to level plans for window locations. Refer to contract for options and chattels inclusions. The dimensions and areas are approximate only and may not accurately represent the actual dimensions and areas of the apartments or the spaces within them and are subject to change without notice. In addition, locations of utilities may vary during construction and fittings and fixtures on these plan are for illustrative purposes only. The areas are generally measured in accordance with the Property Council of Australia method of measurement. Prospective purchasers must rely on their own enquiries and should refer to the contract of sales and its schedules for all matters to be included in the purchase price of the apartment, including plans, finishes, fixtures, fitting, appliances and other particulars of sale. Loose furniture and planters are not included. Extent of the floor finishes may vary. External space and landscaping indicative only. Refer to level plans for further information.

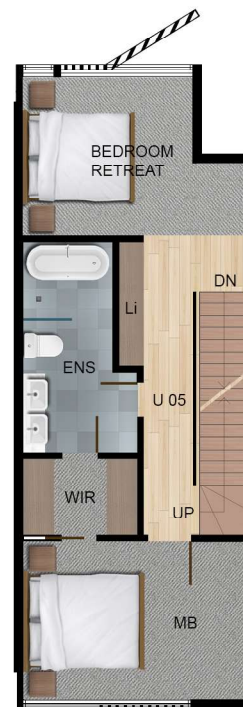




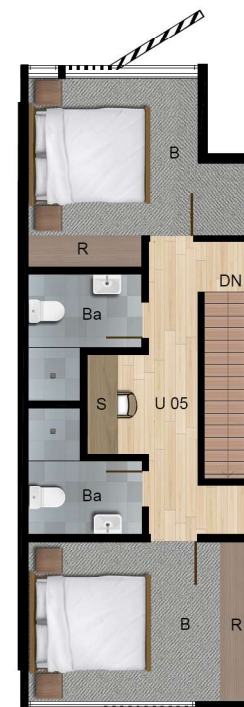
GARAGE



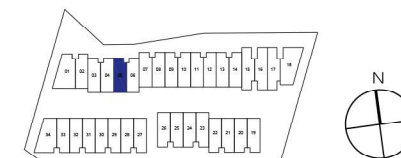
GROUND FLOOR - OPTION



FIRST FLOOR - OPTION



SECOND FLOOR - OPTION



# DONCASTER GARDENS

DWELLING  
**05**



4



3.5



2

INTERNAL  
AREA

210.56 m<sup>2</sup>

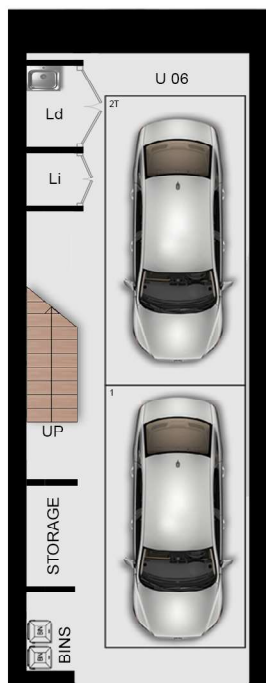
EXTERNAL  
AREA

33.7 m<sup>2</sup>

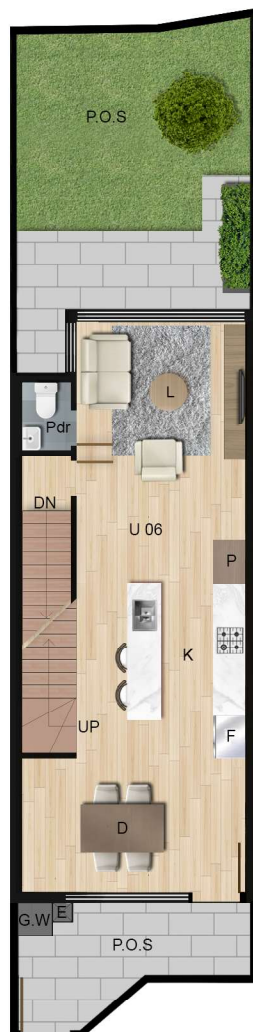
TOTAL  
AREA

244.26 m<sup>2</sup>

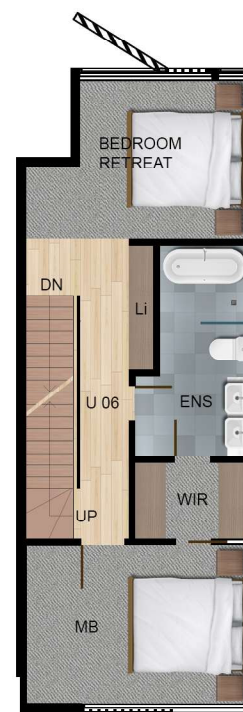
DISCLAIMER: This plans are intended as a guide only. Window size and location may vary. Refer to level plans for window locations. Refer to contract for options and chattels inclusions. The dimensions and areas are approximate only and may not accurately represent the actual dimensions and areas of the apartments or the spaces within them and are subject to change without notice. In addition, locations of utilities may vary during construction and fittings and fixtures on these plan are for illustrative purposes only. The areas are generally measured in accordance with the Property Council of Australia method of measurement. Prospective purchasers must rely on their own enquiries and should refer to the contract of sales and its schedules for all matters to be included in the purchase price of the apartment, including plans, finishes, fixtures, fitting, appliances and other particulars of sale. Loose furniture and planters are not included. Extent of the floor finishes may vary. External space and landscaping indicative only. Refer to level plans for further information.



GARAGE



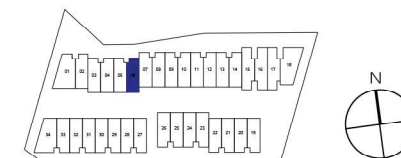
GROUND FLOOR - OPTION



FIRST FLOOR - OPTION



SECOND FLOOR - OPTION



# DONCASTER GARDENS

DWELLING  
**06**



4



3.5



2

INTERNAL  
AREA

210.56 m<sup>2</sup>

EXTERNAL  
AREA

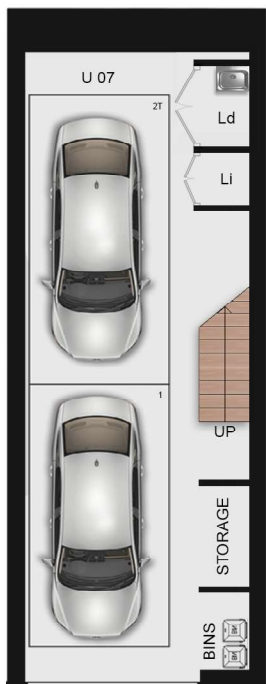
34.26 m<sup>2</sup>

TOTAL  
AREA

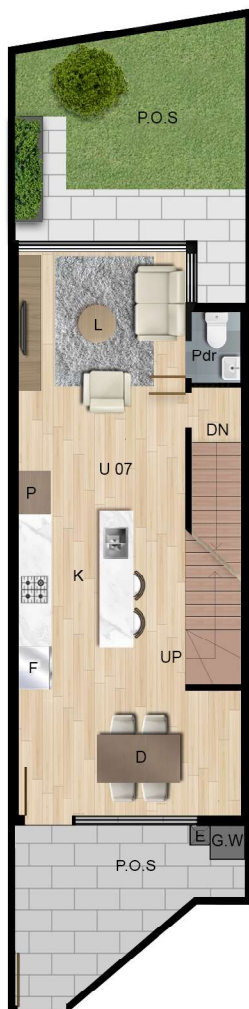
244.82 m<sup>2</sup>

DISCLAIMER: This plans are intended as a guide only. Window size and location may vary. Refer to level plans for window locations. Refer to contract for options and chattels inclusions. The dimensions and areas are approximate only and may not accurately represent the actual dimensions and areas of the apartments or the spaces within them and are subject to change without notice. In addition, locations of utilities may vary during construction and fittings and fixtures on these plan are for illustrative purposes only. The areas are generally measured in accordance with the Property Council of Australia method of measurement. Prospective purchasers must rely on their own enquiries and should refer to the contract of sales and its schedules for all matters to be included in the purchase price of the apartment, including plans, finishes, fixtures, fitting, appliances and other particulars of sale. Loose furniture and planters are not included. Extent of the floor finishes may vary. External space and landscaping indicative only. Refer to level plans for further information.

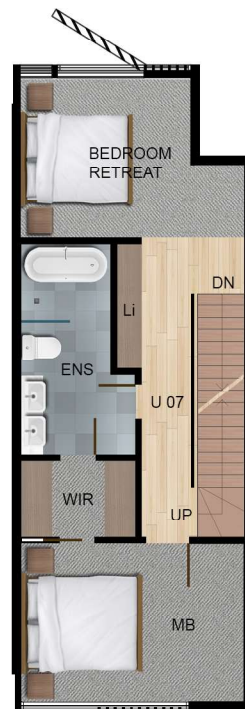




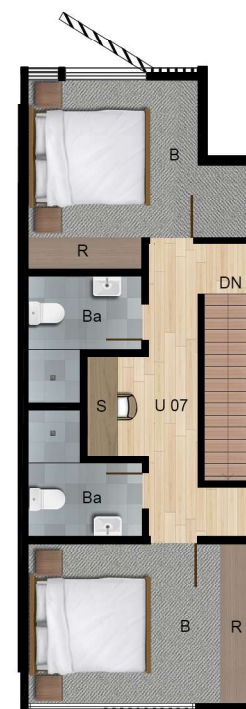
GARAGE



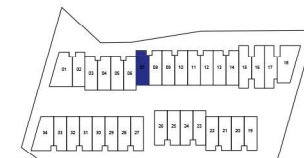
GROUND FLOOR - OPTION



FIRST FLOOR - OPTION



SECOND FLOOR - OPTION



# DONCASTER GARDENS

DWELLING  
**07**



4



3.5



2

INTERNAL  
AREA

210.56 m<sup>2</sup>

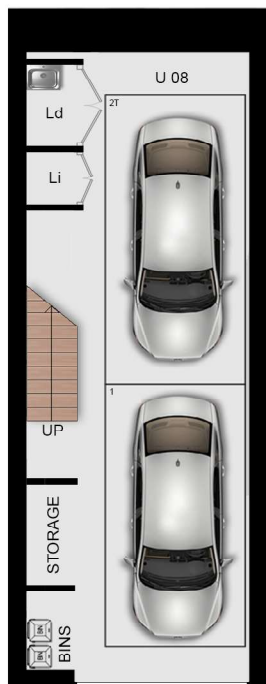
EXTERNAL  
AREA

30.64 m<sup>2</sup>

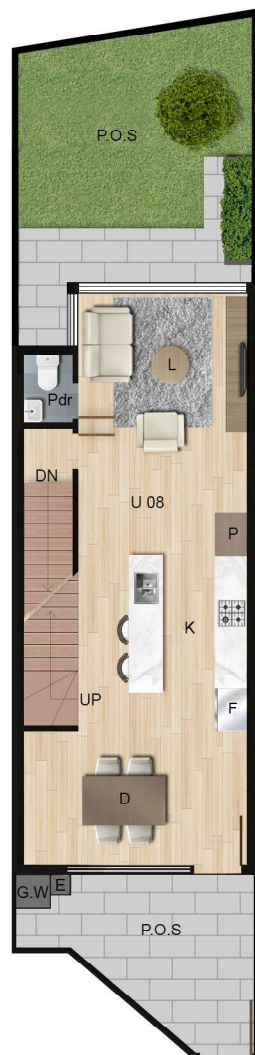
TOTAL  
AREA

241.2 m<sup>2</sup>

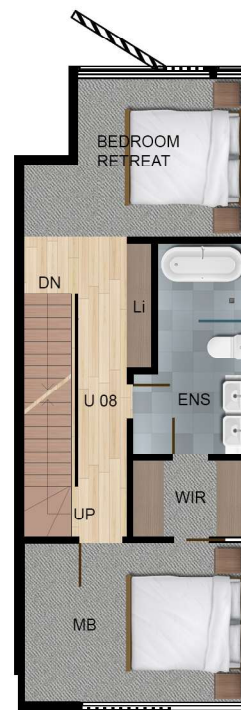
DISCLAIMER: This plans are intended as a guide only. Window size and location may vary. Refer to level plans for window locations. Refer to contract for options and chattels inclusions. The dimensions and areas are approximate only and may not accurately represent the actual dimensions and areas of the apartments or the spaces within them and are subject to change without notice. In addition, locations of utilities may vary during construction and fittings and fixtures on these plan are for illustrative purposes only. The areas are generally measured in accordance with the Property Council of Australia method of measurement. Prospective purchasers must rely on their own enquiries and should refer to the contract of sales and its schedules for all matters to be included in the purchase price of the apartment, including plans, finishes, fixtures, fitting, appliances and other particulars of sale. Loose furniture and planters are not included. Extent of the floor finishes may vary. External space and landscaping indicative only. Refer to level plans for further information.



GARAGE



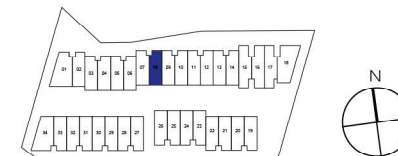
GROUND FLOOR - OPTION



FIRST FLOOR - OPTION



SECOND FLOOR - OPTION



# DONCASTER GARDENS

DWELLING  
**08**



4



3.5



2

INTERNAL  
AREA

210.56 m<sup>2</sup>

EXTERNAL  
AREA

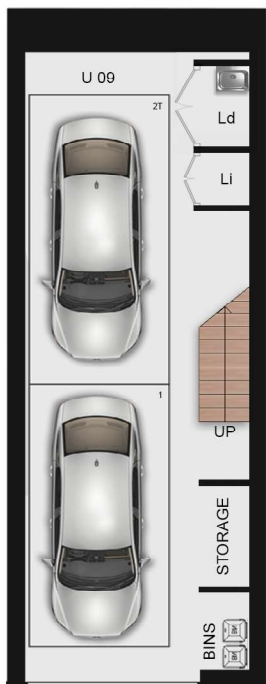
33.96 m<sup>2</sup>

TOTAL  
AREA

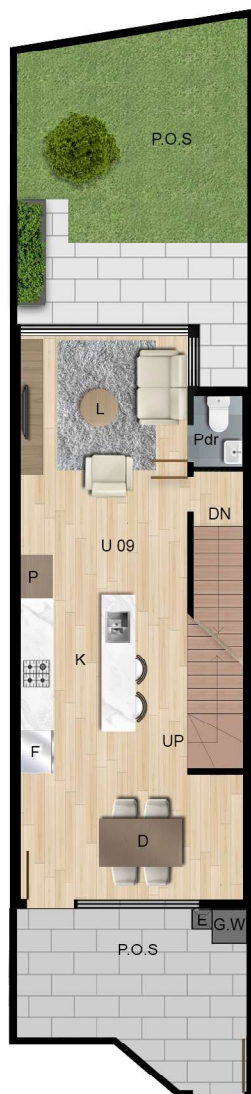
244.52 m<sup>2</sup>

DISCLAIMER: This plans are intended as a guide only. Window size and location may vary. Refer to level plans for window locations. Refer to contract for options and chattels inclusions. The dimensions and areas are approximate only and may not accurately represent the actual dimensions and areas of the apartments or the spaces within them and are subject to change without notice. In addition, locations of utilities may vary during construction and fittings and fixtures on these plan are for illustrative purposes only. The areas are generally measured in accordance with the Property Council of Australia method of measurement. Prospective purchasers must rely on their own enquiries and should refer to the contract of sales and its schedules for all matters to be included in the purchase price of the apartment, including plans, finishes, fixtures, fitting, appliances and other particulars of sale. Loose furniture and planters are not included. Extent of the floor finishes may vary. External space and landscaping indicative only. Refer to level plans for further information.

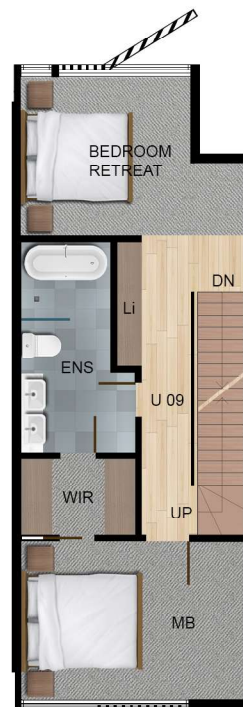




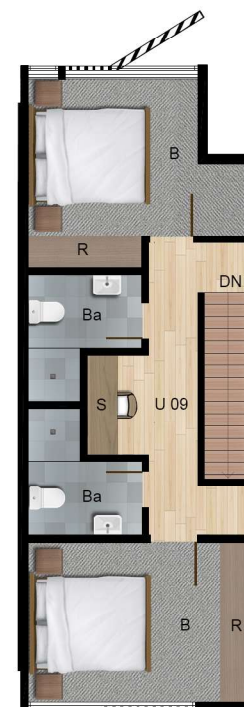
GARAGE



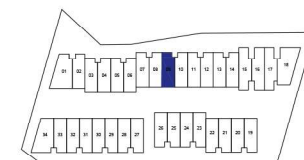
GROUND FLOOR - OPTION



FIRST FLOOR - OPTION



SECOND FLOOR - OPTION



# DONCASTER GARDENS

DWELLING  
**09**



4



3.5



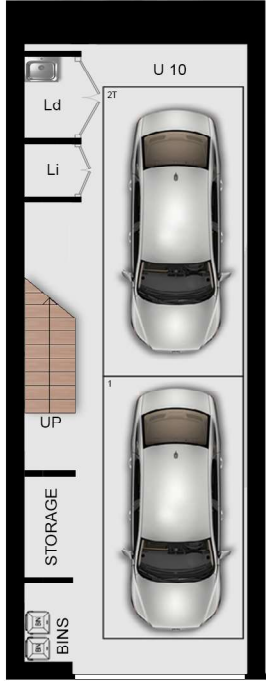
2

INTERNAL  
AREA  
210.56 m<sup>2</sup>

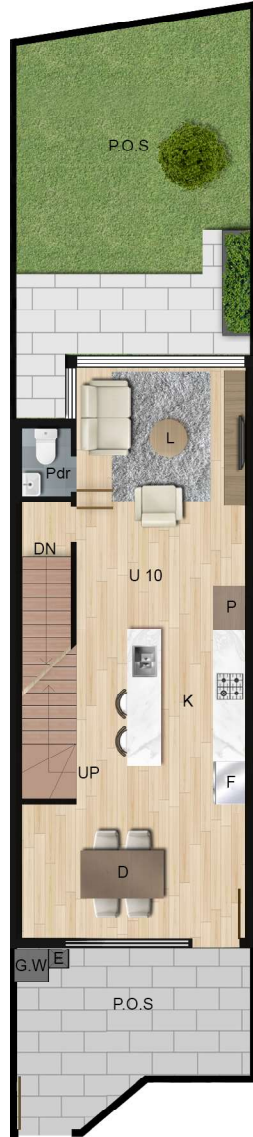
EXTERNAL  
AREA  
38.78 m<sup>2</sup>

TOTAL  
AREA  
249.34 m<sup>2</sup>

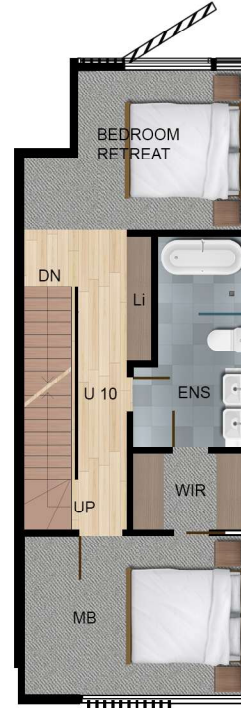
DISCLAIMER: This plans are intended as a guide only. Window size and location may vary. Refer to level plans for window locations. Refer to contract for options and chattels inclusions. The dimensions and areas are approximate only and may not accurately represent the actual dimensions and areas of the apartments or the spaces within them and are subject to change without notice. In addition, locations of utilities may vary during construction and fittings and fixtures on these plan are for illustrative purposes only. The areas are generally measured in accordance with the Property Council of Australia method of measurement. Prospective purchasers must rely on their own enquiries and should refer to the contract of sales and its schedules for all matters to be included in the purchase price of the apartment, including plans, finishes, fixtures, fitting, appliances and other particulars of sale. Loose furniture and planters are not included. Extent of the floor finishes may vary. External space and landscaping indicative only. Refer to level plans for further information.



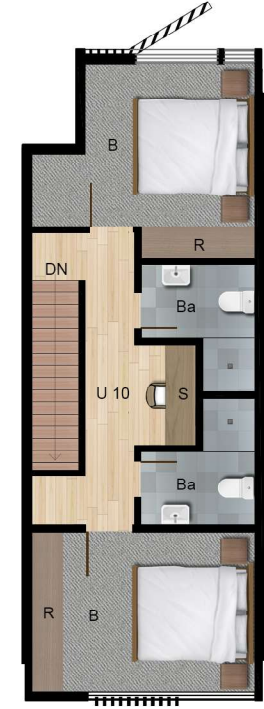
GARAGE



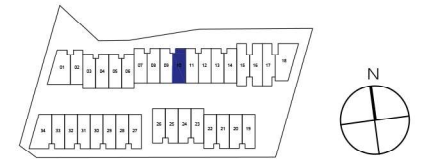
GROUND FLOOR - OPTION



FIRST FLOOR - OPTION



SECOND FLOOR - OPTION



# DONCASTER GARDENS

DWELLING  
**10**



4



3.5



2

INTERNAL  
AREA

210.56 m<sup>2</sup>

EXTERNAL  
AREA

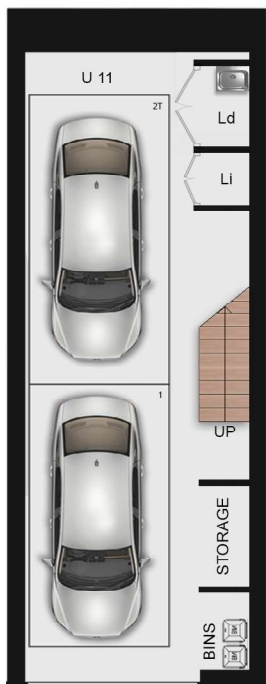
41.96 m<sup>2</sup>

TOTAL  
AREA

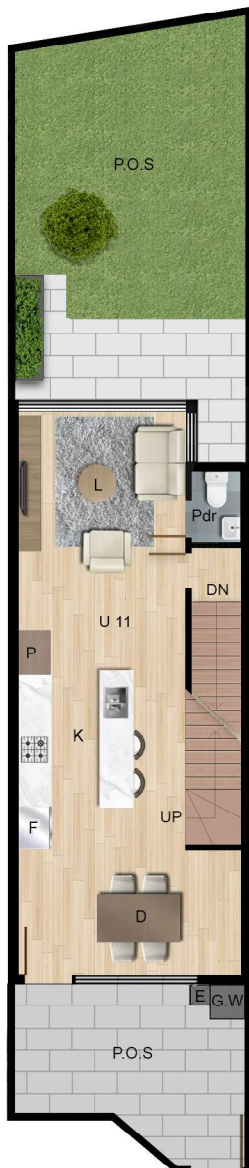
252.52 m<sup>2</sup>

DISCLAIMER: This plans are intended as a guide only. Window size and location may vary. Refer to level plans for window locations. Refer to contract for options and chattels inclusions. The dimensions and areas are approximate only and may not accurately represent the actual dimensions and areas of the apartments or the spaces within them and are subject to change without notice. In addition, locations of utilities may vary during construction and fittings and fixtures on these plan are for illustrative purposes only. The areas are generally measured in accordance with the Property Council of Australia method of measurement. Prospective purchasers must rely on their own enquiries and should refer to the contract of sales and its schedules for all matters to be included in the purchase price of the apartment, including plans, finishes, fixtures, fitting, appliances and other particulars of sale. Loose furniture and planters are not included. Extent of the floor finishes may vary. External space and landscaping indicative only. Refer to level plans for further information.

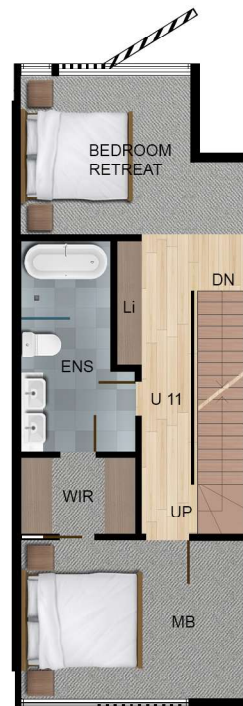




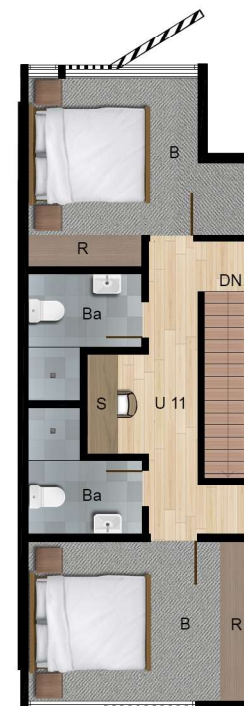
GARAGE



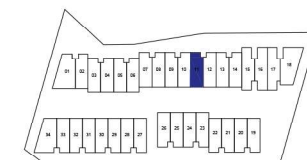
GROUND FLOOR - OPTION



FIRST FLOOR - OPTION



SECOND FLOOR - OPTION



# DONCASTER GARDENS

DWELLING  
**11**



4



3.5



2

INTERNAL  
AREA

210.56 m<sup>2</sup>

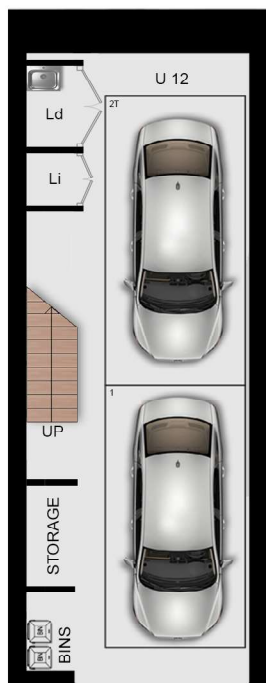
EXTERNAL  
AREA

45.14 m<sup>2</sup>

TOTAL  
AREA

255.70 m<sup>2</sup>

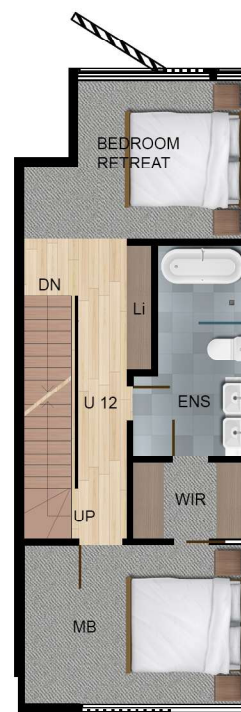
DISCLAIMER: This plans are intended as a guide only. Window size and location may vary. Refer to level plans for window locations. Refer to contract for options and chattels inclusions. The dimensions and areas are approximate only and may not accurately represent the actual dimensions and areas of the apartments or the spaces within them and are subject to change without notice. In addition, locations of utilities may vary during construction and fittings and fixtures on these plan are for illustrative purposes only. The areas are generally measured in accordance with the Property Council of Australia method of measurement. Prospective purchasers must rely on their own enquiries and should refer to the contract of sales and its schedules for all matters to be included in the purchase price of the apartment, including plans, finishes, fixtures, fitting, appliances and other particulars of sale. Loose furniture and planters are not included. Extent of the floor finishes may vary. External space and landscaping indicative only. Refer to level plans for further information.



GARAGE



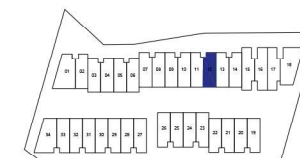
GROUND FLOOR - OPTION



FIRST FLOOR - OPTION



SECOND FLOOR - OPTION



# DONCASTER GARDENS

DWELLING  
**12**



4



3.5



2

INTERNAL  
AREA

210.56 m2

EXTERNAL  
AREA

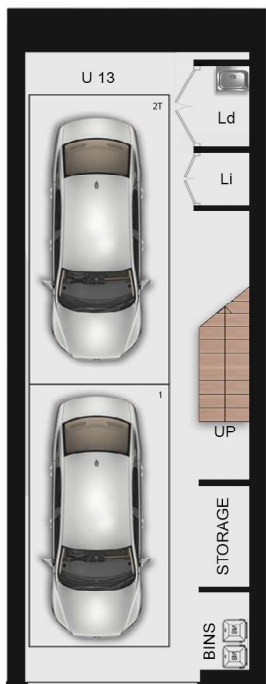
46.94 m2

TOTAL  
AREA

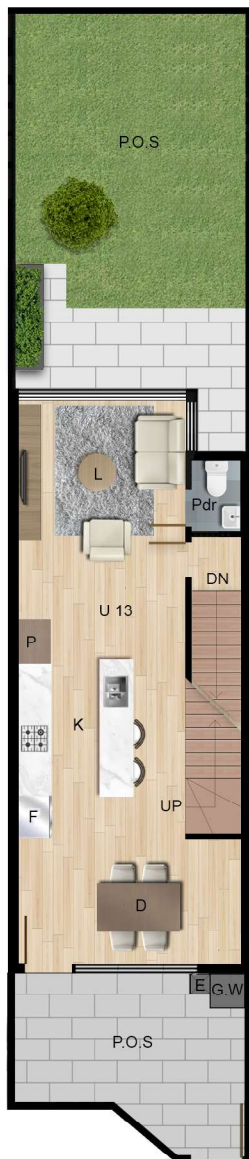
257.50 m2

DISCLAIMER: This plans are intended as a guide only. Window size and location may vary. Refer to level plans for window locations. Refer to contract for options and chattels inclusions. The dimensions and areas are approximate only and may not accurately represent the actual dimensions and areas of the apartments or the spaces within them and are subject to change without notice. In addition, locations of utilities may vary during construction and fittings and fixtures on these plan are for illustrative purposes only. The areas are generally measured in accordance with the Property Council of Australia method of measurement. Prospective purchasers must rely on their own enquiries and should refer to the contract of sales and its schedules for all matters to be included in the purchase price of the apartment, including plans, finishes, fixtures, fitting, appliances and other particulars of sale. Loose furniture and planters are not included. Extent of the floor finishes may vary. External space and landscaping indicative only. Refer to level plans for further information.

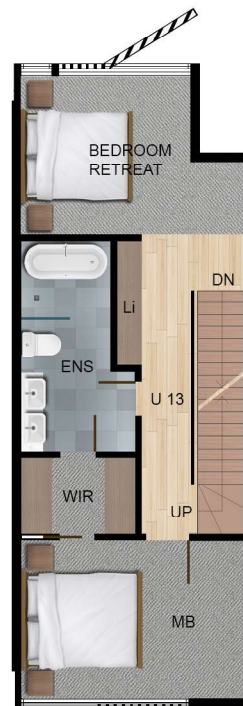




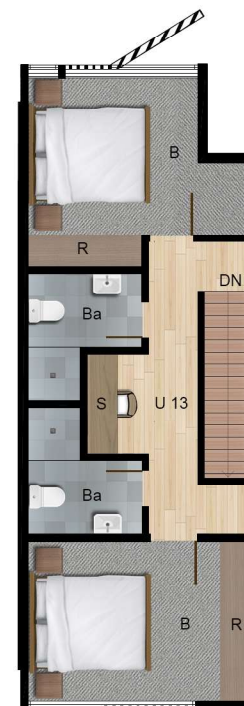
GARAGE



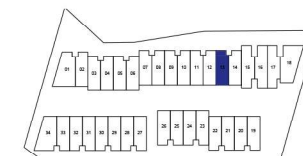
GROUND FLOOR - OPTION



FIRST FLOOR - OPTION



SECOND FLOOR - OPTION



# DONCASTER GARDENS

DWELLING  
**13**



4



3.5



2

INTERNAL  
AREA

210.56 m<sup>2</sup>

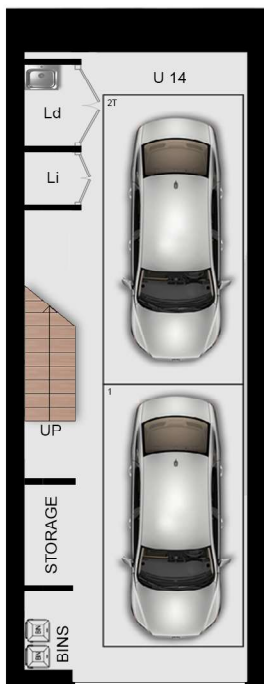
EXTERNAL  
AREA

46.91 m<sup>2</sup>

TOTAL  
AREA

257.47 m<sup>2</sup>

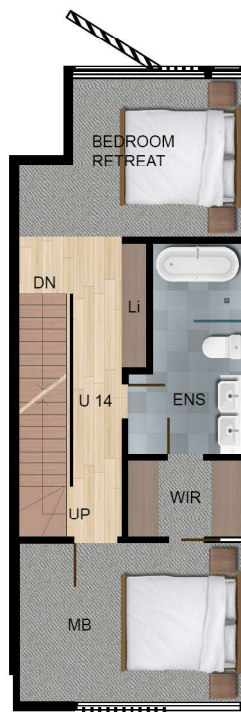
DISCLAIMER: This plans are intended as a guide only. Window size and location may vary. Refer to level plans for window locations. Refer to contract for options and chattels inclusions. The dimensions and areas are approximate only and may not accurately represent the actual dimensions and areas of the apartments or the spaces within them and are subject to change without notice. In addition, locations of utilities may vary during construction and fittings and fixtures on these plan are for illustrative purposes only. The areas are generally measured in accordance with the Property Council of Australia method of measurement. Prospective purchasers must rely on their own enquiries and should refer to the contract of sales and its schedules for all matters to be included in the purchase price of the apartment, including plans, finishes, fixtures, fitting, appliances and other particulars of sale. Loose furniture and planters are not included. Extent of the floor finishes may vary. External space and landscaping indicative only. Refer to level plans for further information.



GARAGE



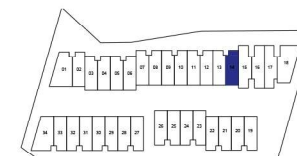
GROUND FLOOR - OPTION



FIRST FLOOR - OPTION



SECOND FLOOR - OPTION



# DONCASTER GARDENS

DWELLING  
14



4



3.5



2

INTERNAL  
AREA

210.56 m<sup>2</sup>

EXTERNAL  
AREA

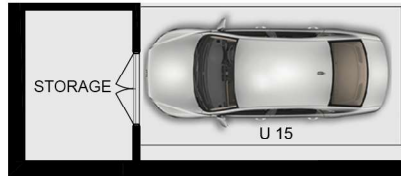
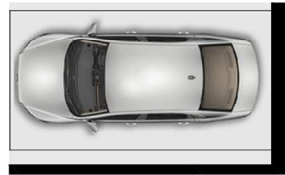
47.57 m<sup>2</sup>

TOTAL  
AREA

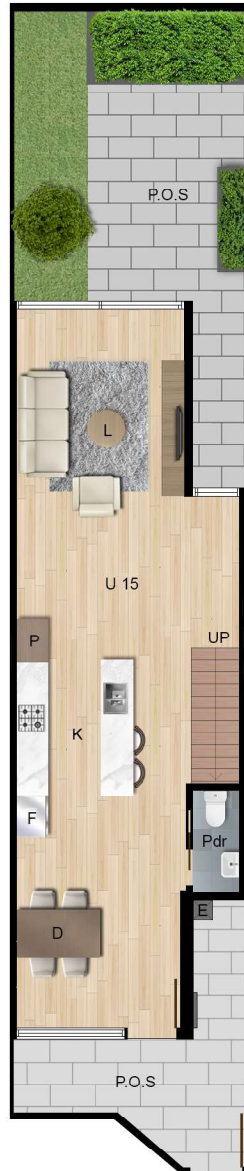
258.13 m<sup>2</sup>

DISCLAIMER: This plans are intended as a guide only. Window size and location may vary. Refer to level plans for window locations. Refer to contract for options and chattels inclusions. The dimensions and areas are approximate only and may not accurately represent the actual dimensions and areas of the apartments or the spaces within them and are subject to change without notice. In addition, locations of utilities may vary during construction and fittings and fixtures on these plan are for illustrative purposes only. The areas are generally measured in accordance with the Property Council of Australia method of measurement. Prospective purchasers must rely on their own enquiries and should refer to the contract of sales and its schedules for all matters to be included in the purchase price of the apartment, including plans, finishes, fixtures, fitting, appliances and other particulars of sale. Loose furniture and planters are not included. Extent of the floor finishes may vary. External space and landscaping indicative only. Refer to level plans for further information.

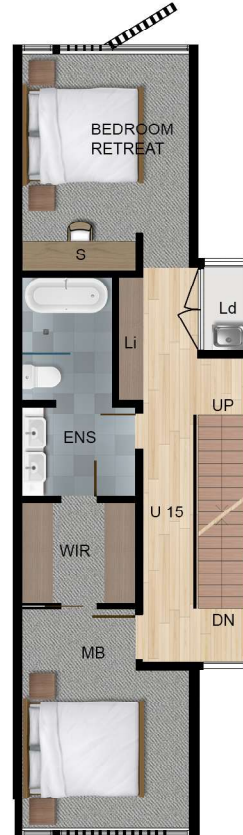




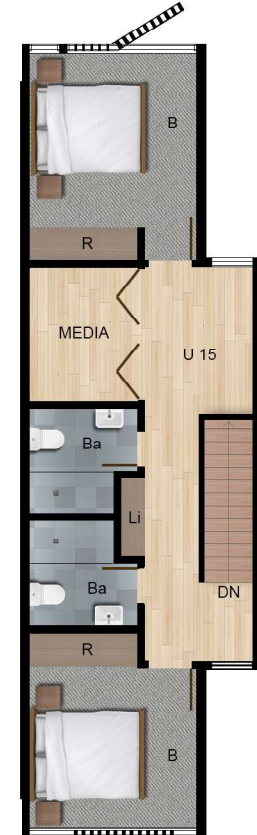
GARAGE



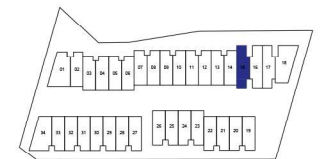
GROUND FLOOR - OPTION



FIRST FLOOR - OPTION



SECOND FLOOR - OPTION



# DONCASTER GARDENS

DWELLING  
**15**



4



3.5



2

INTERNAL  
AREA

211.14 m<sup>2</sup>

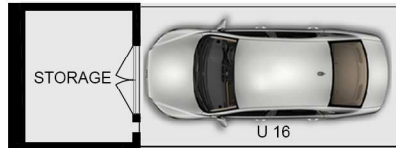
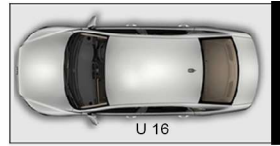
EXTERNAL  
AREA

39.67 m<sup>2</sup>

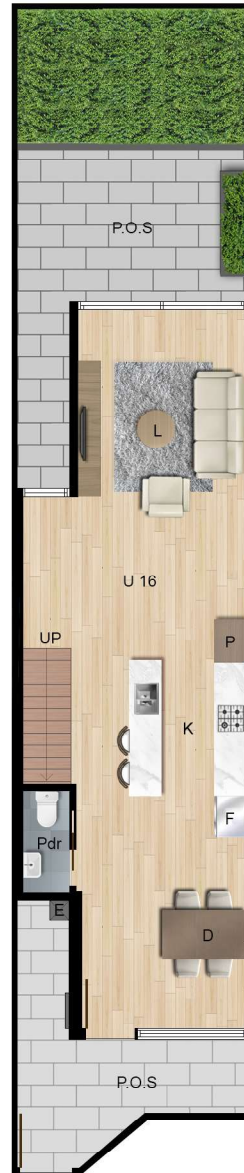
TOTAL  
AREA

250.81 m<sup>2</sup>

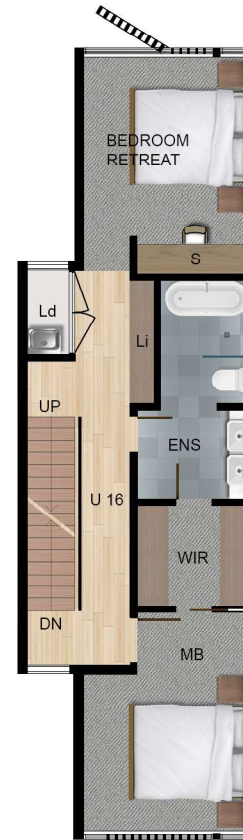
DISCLAIMER: This plans are intended as a guide only. Window size and location may vary. Refer to level plans for window locations. Refer to contract for options and chattels inclusions. The dimensions and areas are approximate only and may not accurately represent the actual dimensions and areas of the apartments or the spaces within them and are subject to change without notice. In addition, locations of utilities may vary during construction and fittings and fixtures on these plan are for illustrative purposes only. The areas are generally measured in accordance with the Property Council of Australia method of measurement. Prospective purchasers must rely on their own enquiries and should refer to the contract of sales and its schedules for all matters to be included in the purchase price of the apartment, including plans, finishes, fixtures, fitting, appliances and other particulars of sale. Loose furniture and planters are not included. Extent of the floor finishes may vary. External space and landscaping indicative only. Refer to level plans for further information.



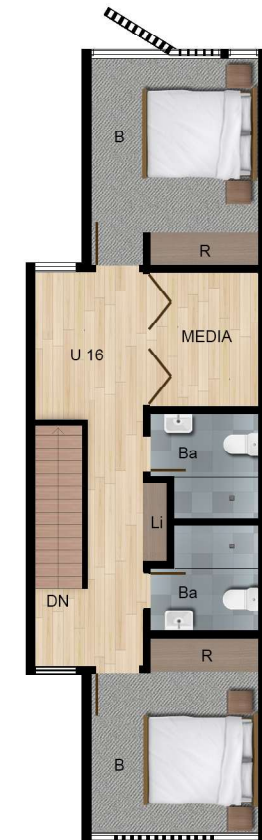
GARAGE



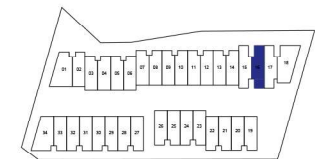
GROUND FLOOR - OPTION



FIRST FLOOR - OPTION



SECOND FLOOR - OPTION



# DONCASTER GARDENS

DWELLING  
**16**



4



3.5



2

INTERNAL  
AREA

207.27 m<sup>2</sup>

EXTERNAL  
AREA

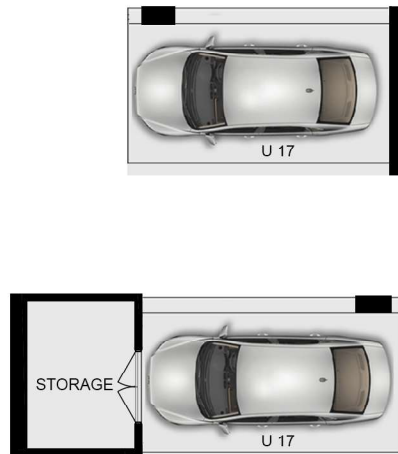
40.12 m<sup>2</sup>

TOTAL  
AREA

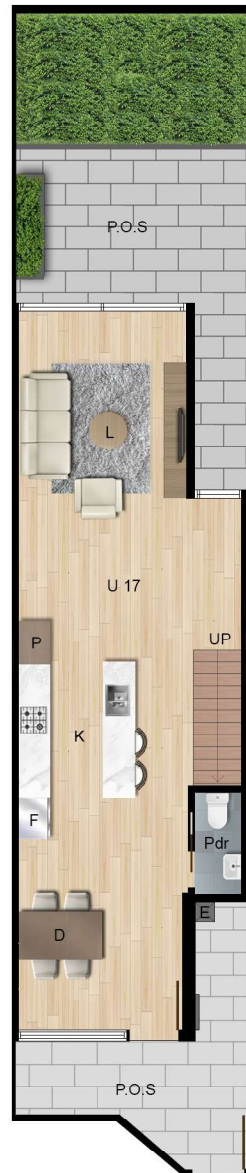
247.39 m<sup>2</sup>

DISCLAIMER: This plans are intended as a guide only. Window size and location may vary. Refer to level plans for window locations. Refer to contract for options and chattels inclusions. The dimensions and areas are approximate only and may not accurately represent the actual dimensions and areas of the apartments or the spaces within them and are subject to change without notice. In addition, locations of utilities may vary during construction and fittings and fixtures on these plan are for illustrative purposes only. The areas are generally measured in accordance with the Property Council of Australia method of measurement. Prospective purchasers must rely on their own enquiries and should refer to the contract of sales and its schedules for all matters to be included in the purchase price of the apartment, including plans, finishes, fixtures, fitting, appliances and other particulars of sale. Loose furniture and planters are not included. Extent of the floor finishes may vary. External space and landscaping indicative only. Refer to level plans for further information.

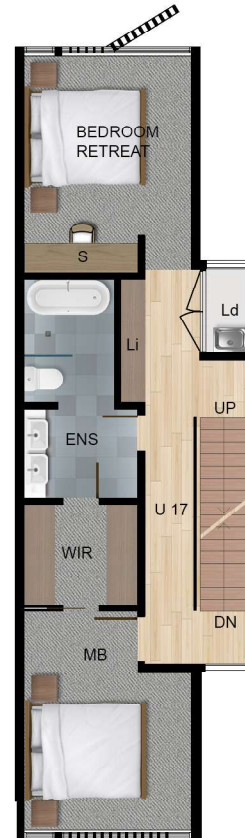




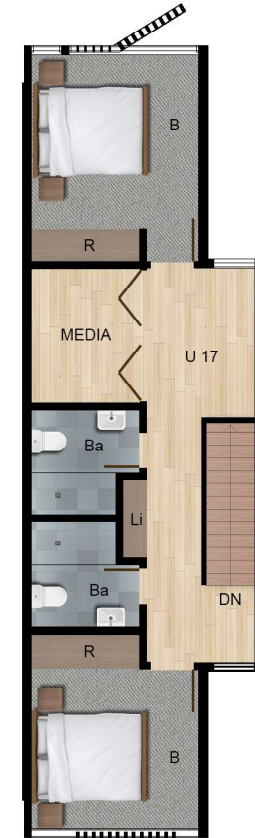
GARAGE



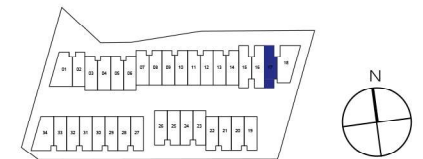
GROUND FLOOR - OPTION



FIRST FLOOR - OPTION



SECOND FLOOR - OPTION



# DONCASTER GARDENS

DWELLING  
**17**



4



3.5



2

INTERNAL  
AREA

207.96 m<sup>2</sup>

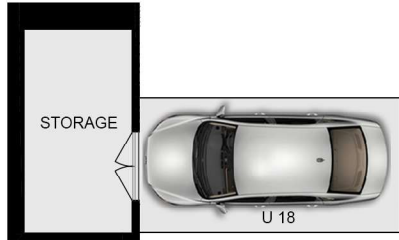
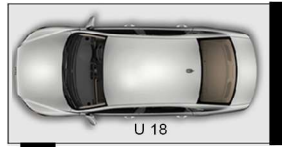
EXTERNAL  
AREA

40.18 m<sup>2</sup>

TOTAL  
AREA

248.14 m<sup>2</sup>

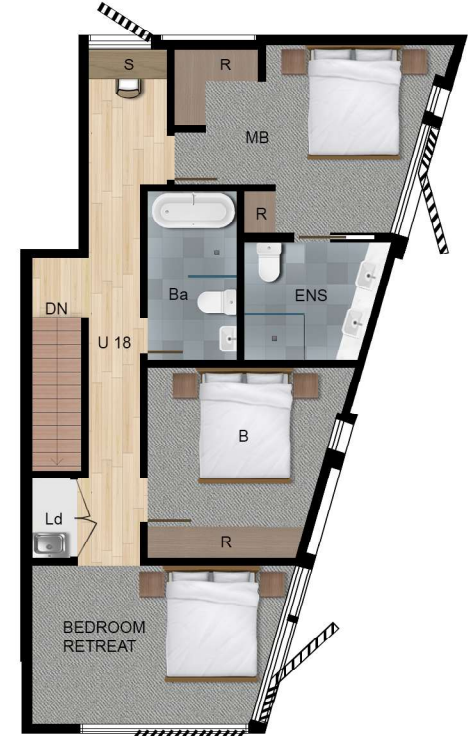
DISCLAIMER: This plans are intended as a guide only. Window size and location may vary. Refer to level plans for window locations. Refer to contract for options and chattels inclusions. The dimensions and areas are approximate only and may not accurately represent the actual dimensions and areas of the apartments or the spaces within them and are subject to change without notice. In addition, locations of utilities may vary during construction and fittings and fixtures on these plan are for illustrative purposes only. The areas are generally measured in accordance with the Property Council of Australia method of measurement. Prospective purchasers must rely on their own enquiries and should refer to the contract of sales and its schedules for all matters to be included in the purchase price of the apartment, including plans, finishes, fixtures, fitting, appliances and other particulars of sale. Loose furniture and planters are not included. Extent of the floor finishes may vary. External space and landscaping indicative only. Refer to level plans for further information.



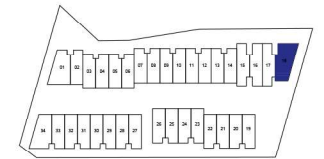
GARAGE



GROUND FLOOR - OPTION



FIRST FLOOR - OPTION



# DONCASTER GARDENS

DWELLING  
**18**



3



2.5



2

INTERNAL  
AREA

187.22 m<sup>2</sup>

EXTERNAL  
AREA

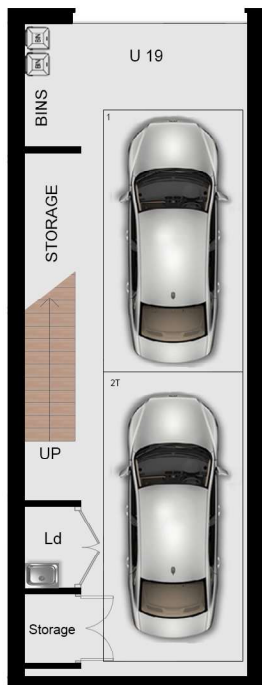
110.0 m<sup>2</sup>

TOTAL  
AREA

297.22 m<sup>2</sup>

DISCLAIMER: This plans are intended as a guide only. Window size and location may vary. Refer to level plans for window locations. Refer to contract for options and chattels inclusions. The dimensions and areas are approximate only and may not accurately represent the actual dimensions and areas of the apartments or the spaces within them and are subject to change without notice. In addition, locations of utilities may vary during construction and fittings and fixtures on these plan are for illustrative purposes only. The areas are generally measured in accordance with the Property Council of Australia method of measurement. Prospective purchasers must rely on their own enquiries and should refer to the contract of sales and its schedules for all matters to be included in the purchase price of the apartment, including plans, finishes, fixtures, fitting, appliances and other particulars of sale. Loose furniture and planters are not included. Extent of the floor finishes may vary. External space and landscaping indicative only. Refer to level plans for further information.

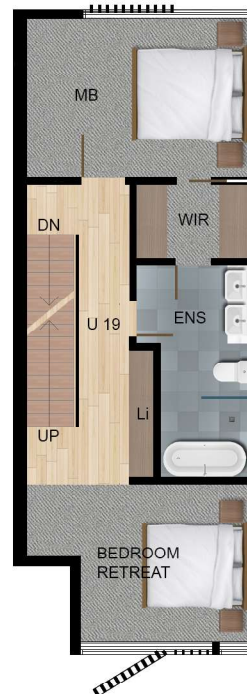




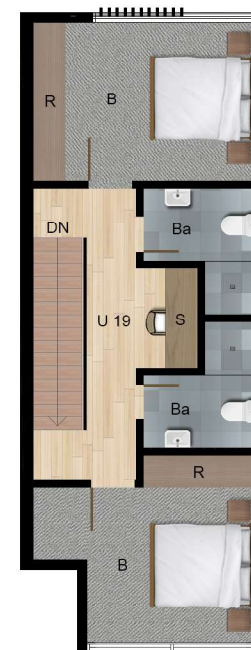
GARAGE



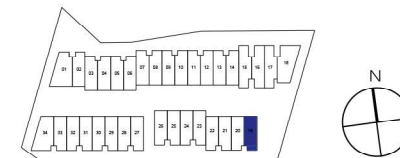
GROUND FLOOR - OPTION



FIRST FLOOR - OPTION



SECOND FLOOR - OPTION



# DONCASTER GARDENS

DWELLING  
**19**



4



3.5



2

INTERNAL  
AREA

214.76 m2

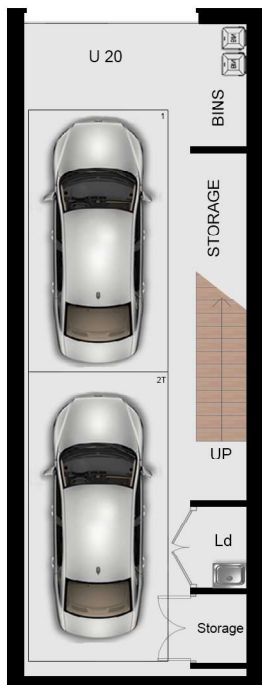
EXTERNAL  
AREA

36.98 m2

TOTAL  
AREA

251.74 m2

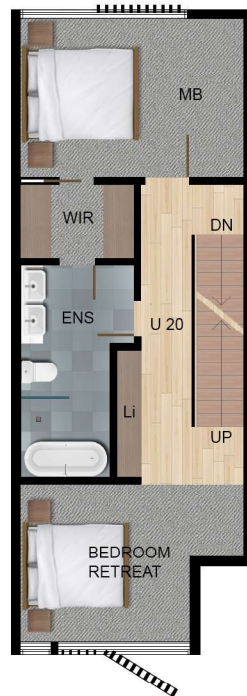
DISCLAIMER: This plans are intended as a guide only. Window size and location may vary. Refer to level plans for window locations. Refer to contract for options and chattels inclusions. The dimensions and areas are approximate only and may not accurately represent the actual dimensions and areas of the apartments or the spaces within them and are subject to change without notice. In addition, locations of utilities may vary during construction and fittings and fixtures on these plan are for illustrative purposes only. The areas are generally measured in accordance with the Property Council of Australia method of measurement. Prospective purchasers must rely on their own enquiries and should refer to the contract of sales and its schedules for all matters to be included in the purchase price of the apartment, including plans, finishes, fixtures, fitting, appliances and other particulars of sale. Loose furniture and planters are not included. Extent of the floor finishes may vary. External space and landscaping indicative only. Refer to level plans for further information.



GARAGE



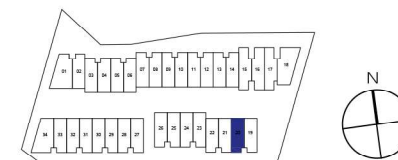
GROUND FLOOR - OPTION



FIRST FLOOR - OPTION



SECOND FLOOR - OPTION



# DONCASTER GARDENS

DWELLING  
**20**



4



3.5



2

INTERNAL  
AREA

212.73 m<sup>2</sup>

EXTERNAL  
AREA

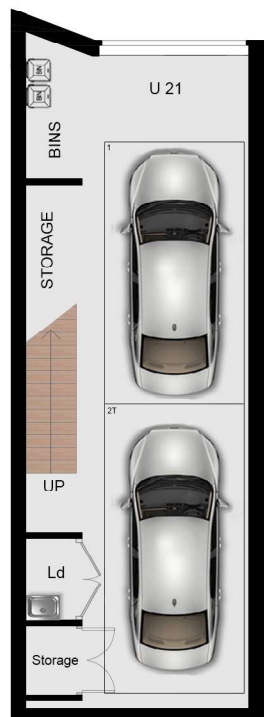
36.67 m<sup>2</sup>

TOTAL  
AREA

249.40 m<sup>2</sup>

DISCLAIMER: This plans are intended as a guide only. Window size and location may vary. Refer to level plans for window locations. Refer to contract for options and chattels inclusions. The dimensions and areas are approximate only and may not accurately represent the actual dimensions and areas of the apartments or the spaces within them and are subject to change without notice. In addition, locations of utilities may vary during construction and fittings and fixtures on these plan are for illustrative purposes only. The areas are generally measured in accordance with the Property Council of Australia method of measurement. Prospective purchasers must rely on their own enquiries and should refer to the contract of sales and its schedules for all matters to be included in the purchase price of the apartment, including plans, finishes, fixtures, fitting, appliances and other particulars of sale. Loose furniture and planters are not included. Extent of the floor finishes may vary. External space and landscaping indicative only. Refer to level plans for further information.

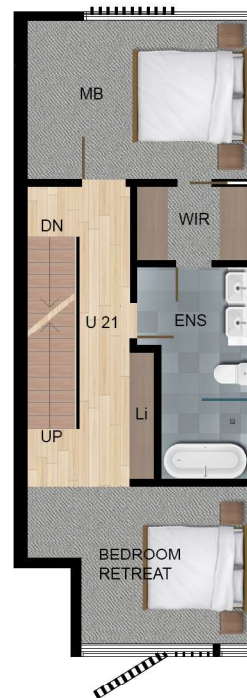




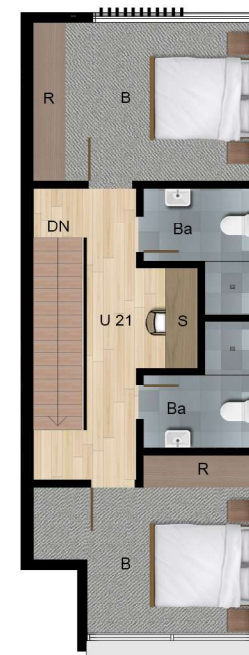
GARAGE



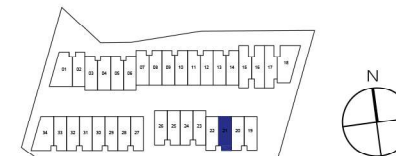
GROUND FLOOR - OPTION



FIRST FLOOR - OPTION



SECOND FLOOR - OPTION



# DONCASTER GARDENS

DWELLING  
**21**



4



3.5



2

INTERNAL  
AREA

213.19 m2

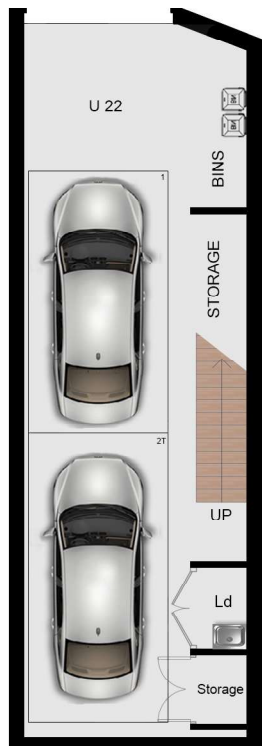
EXTERNAL  
AREA

36.67 m2

TOTAL  
AREA

249.86 m2

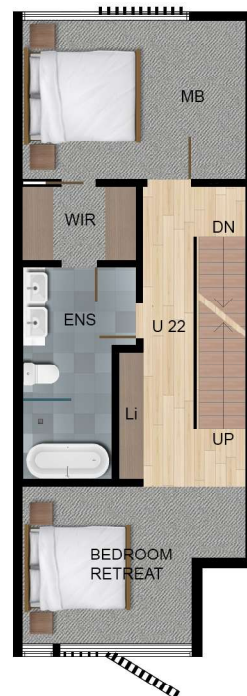
DISCLAIMER: This plans are intended as a guide only. Window size and location may vary. Refer to level plans for window locations. Refer to contract for options and chattels inclusions. The dimensions and areas are approximate only and may not accurately represent the actual dimensions and areas of the apartments or the spaces within them and are subject to change without notice. In addition, locations of utilities may vary during construction and fittings and fixtures on these plan are for illustrative purposes only. The areas are generally measured in accordance with the Property Council of Australia method of measurement. Prospective purchasers must rely on their own enquiries and should refer to the contract of sales and its schedules for all matters to be included in the purchase price of the apartment, including plans, finishes, fixtures, fitting, appliances and other particulars of sale. Loose furniture and planters are not included. Extent of the floor finishes may vary. External space and landscaping indicative only. Refer to level plans for further information.



GARAGE



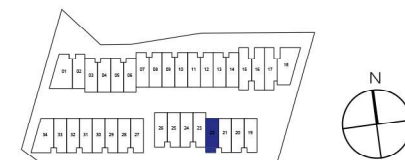
GROUND FLOOR - OPTION



FIRST FLOOR - OPTION



SECOND FLOOR - OPTION



# DONCASTER GARDENS

DWELLING  
**22**



4



3.5



2

INTERNAL  
AREA

217.27 m2

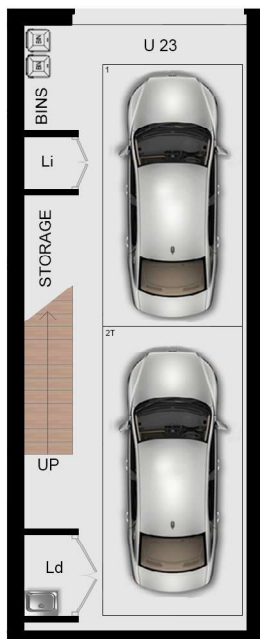
EXTERNAL  
AREA

36.67 m2

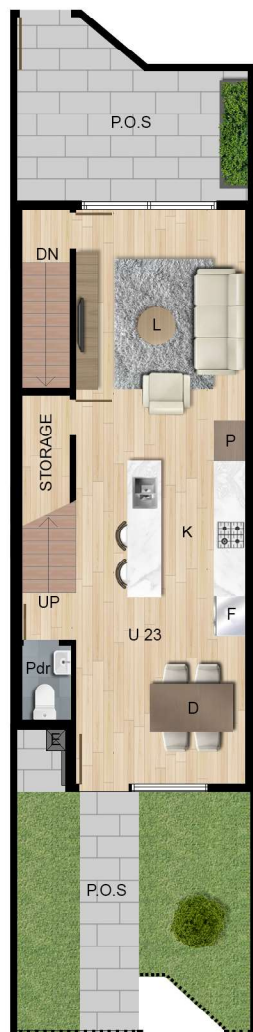
TOTAL  
AREA

253.94 m2

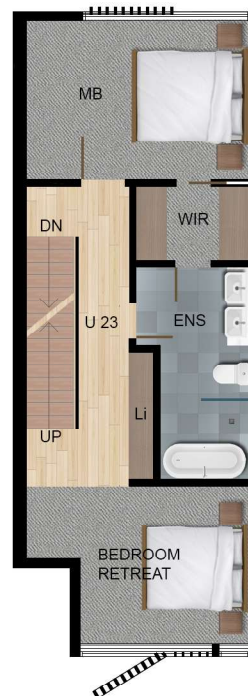
DISCLAIMER: This plans are intended as a guide only. Window size and location may vary. Refer to level plans for window locations. Refer to contract for options and chattels inclusions. The dimensions and areas are approximate only and may not accurately represent the actual dimensions and areas of the apartments or the spaces within them and are subject to change without notice. In addition, locations of utilities may vary during construction and fittings and fixtures on these plan are for illustrative purposes only. The areas are generally measured in accordance with the Property Council of Australia method of measurement. Prospective purchasers must rely on their own enquiries and should refer to the contract of sales and its schedules for all matters to be included in the purchase price of the apartment, including plans, finishes, fixtures, fitting, appliances and other particulars of sale. Loose furniture and planters are not included. Extent of the floor finishes may vary. External space and landscaping indicative only. Refer to level plans for further information.



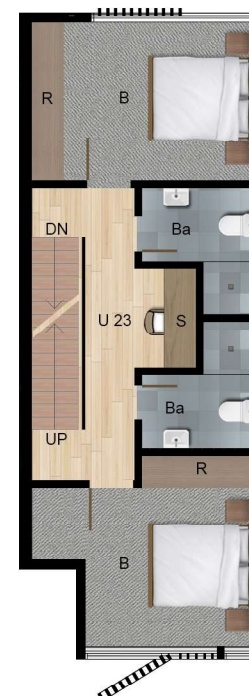
GARAGE



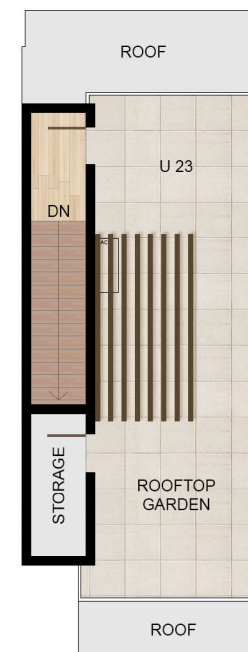
GROUND FLOOR - OPTION



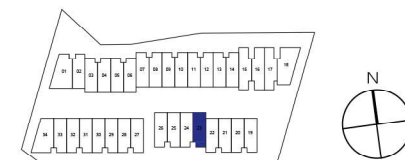
FIRST FLOOR - OPTION



SECOND FLOOR - OPTION



ROOFTOP GARDEN



# DONCASTER GARDENS

DWELLING  
**23**



4



3.5



2

INTERNAL  
AREA

221.23 m<sup>2</sup>

EXTERNAL  
AREA

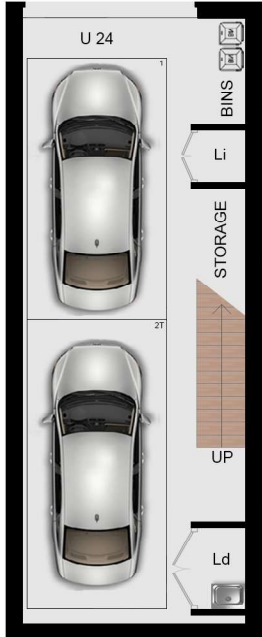
66.83 m<sup>2</sup>

TOTAL  
AREA

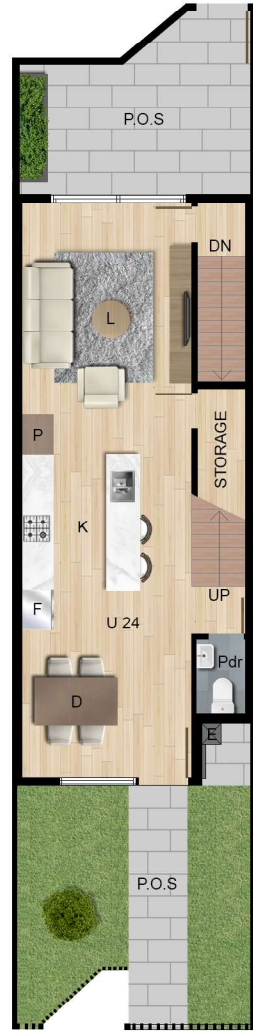
288.06 m<sup>2</sup>

DISCLAIMER: This plans are intended as a guide only. Window size and location may vary. Refer to level plans for window locations. Refer to contract for options and chattels inclusions. The dimensions and areas are approximate only and may not accurately represent the actual dimensions and areas of the apartments or the spaces within them and are subject to change without notice. In addition, locations of utilities may vary during construction and fittings and fixtures on these plan are for illustrative purposes only. The areas are generally measured in accordance with the Property Council of Australia method of measurement. Prospective purchasers must rely on their own enquiries and should refer to the contract of sales and its schedules for all matters to be included in the purchase price of the apartment, including plans, finishes, fixtures, fitting, appliances and other particulars of sale. Loose furniture and planters are not included. Extent of the floor finishes may vary. External space and landscaping indicative only. Refer to level plans for further information.

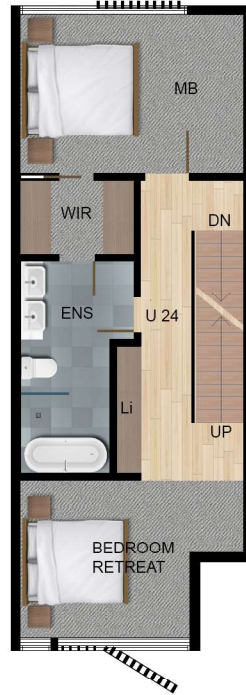




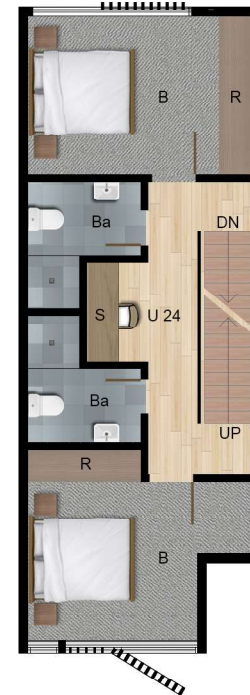
GARAGE



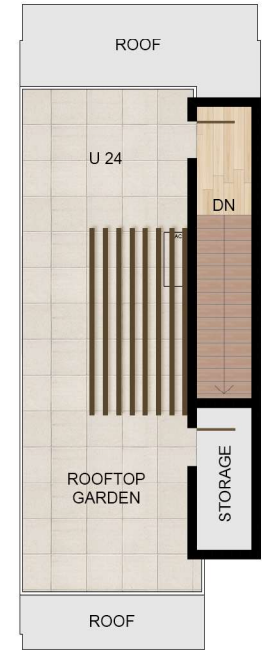
GROUND FLOOR - OPTION



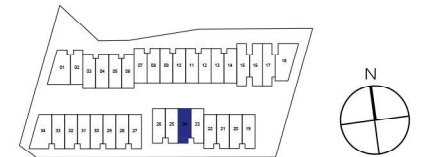
FIRST FLOOR - OPTION



SECOND FLOOR - OPTION



ROOFTOP GARDEN



# DONCASTER GARDENS

DWELLING  
**24**



4



3.5



2

INTERNAL  
AREA

221.23 m2

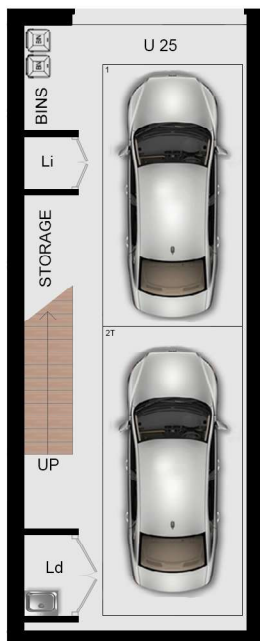
EXTERNAL  
AREA

66.83 m2

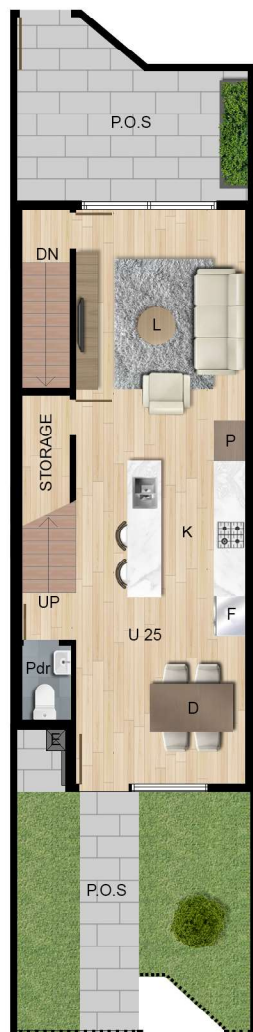
TOTAL  
AREA

288.06 m2

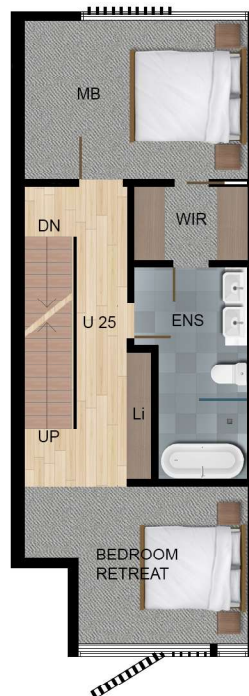
DISCLAIMER: This plans are intended as a guide only. Window size and location may vary. Refer to level plans for window locations. Refer to contract for options and chattels inclusions. The dimensions and areas are approximate only and may not accurately represent the actual dimensions and areas of the apartments or the spaces within them and are subject to change without notice. In addition, locations of utilities may vary during construction and fittings and fixtures on these plan are for illustrative purposes only. The areas are generally measured in accordance with the Property Council of Australia method of measurement. Prospective purchasers must rely on their own enquiries and should refer to the contract of sales and its schedules for all matters to be included in the purchase price of the apartment, including plans, finishes, fixtures, fitting, appliances and other particulars of sale. Loose furniture and planters are not included. Extent of the floor finishes may vary. External space and landscaping indicative only. Refer to level plans for further information.



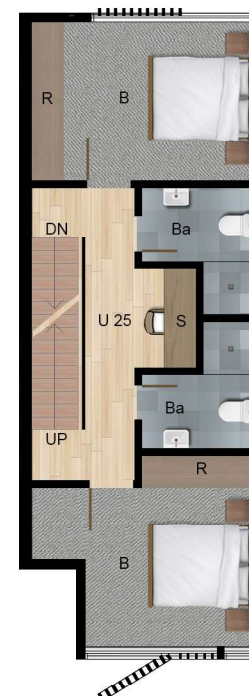
GARAGE



GROUND FLOOR - OPTION



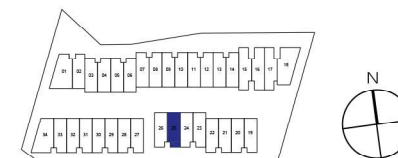
FIRST FLOOR - OPTION



SECOND FLOOR - OPTION



ROOFTOP GARDEN



# DONCASTER GARDENS

DWELLING  
**25**



4



3.5



2

INTERNAL  
AREA

221.23 m2

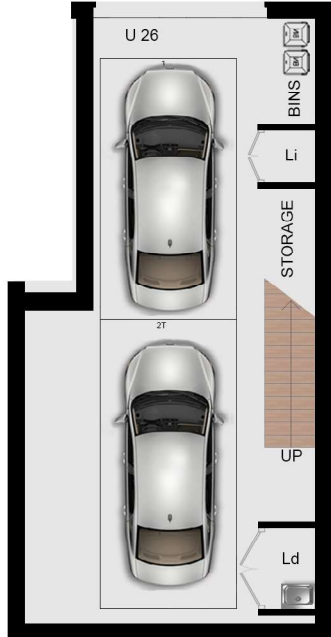
EXTERNAL  
AREA

66.83 m2

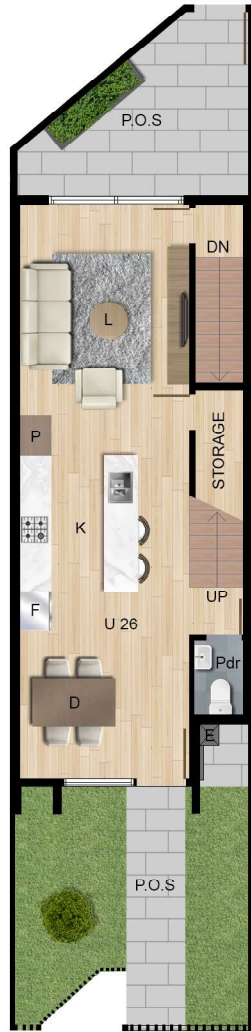
TOTAL  
AREA

288.06 m2

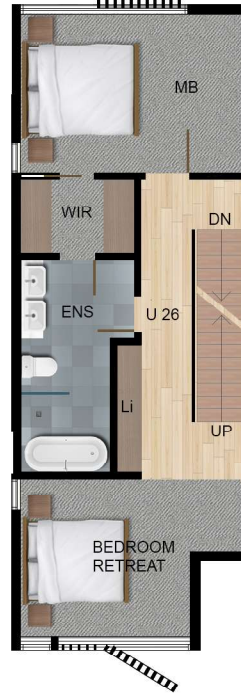
DISCLAIMER: This plans are intended as a guide only. Window size and location may vary. Refer to level plans for window locations. Refer to contract for options and chattels inclusions. The dimensions and areas are approximate only and may not accurately represent the actual dimensions and areas of the apartments or the spaces within them and are subject to change without notice. In addition, locations of utilities may vary during construction and fittings and fixtures on these plan are for illustrative purposes only. The areas are generally measured in accordance with the Property Council of Australia method of measurement. Prospective purchasers must rely on their own enquiries and should refer to the contract of sales and its schedules for all matters to be included in the purchase price of the apartment, including plans, finishes, fixtures, fitting, appliances and other particulars of sale. Loose furniture and planters are not included. Extent of the floor finishes may vary. External space and landscaping indicative only. Refer to level plans for further information.



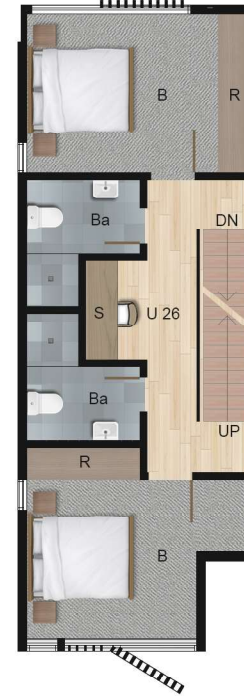
GARAGE



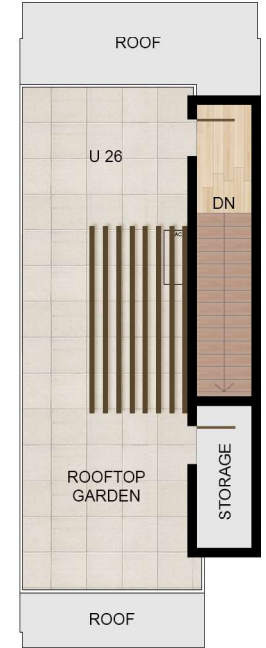
GROUND FLOOR - OPTION



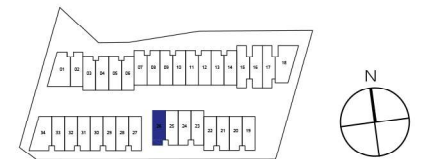
FIRST FLOOR - OPTION



SECOND FLOOR - OPTION



ROOFTOP GARDEN



# DONCASTER GARDENS

DWELLING  
**26**



4



3.5



2

INTERNAL  
AREA

236.18 m<sup>2</sup>

EXTERNAL  
AREA

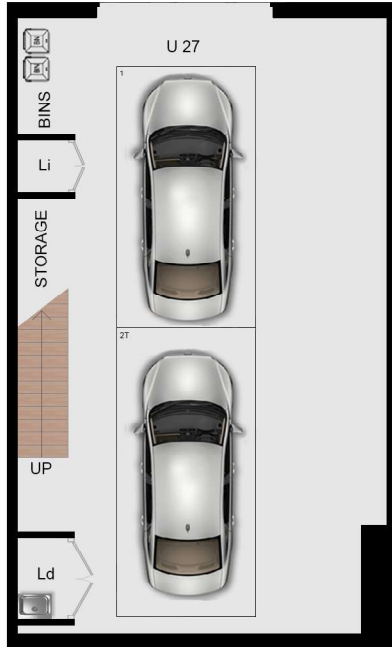
65.26 m<sup>2</sup>

TOTAL  
AREA

301.44 m<sup>2</sup>

DISCLAIMER: This plans are intended as a guide only. Window size and location may vary. Refer to level plans for window locations. Refer to contract for options and chattels inclusions. The dimensions and areas are approximate only and may not accurately represent the actual dimensions and areas of the apartments or the spaces within them and are subject to change without notice. In addition, locations of utilities may vary during construction and fittings and fixtures on these plan are for illustrative purposes only. The areas are generally measured in accordance with the Property Council of Australia method of measurement. Prospective purchasers must rely on their own enquiries and should refer to the contract of sales and its schedules for all matters to be included in the purchase price of the apartment, including plans, finishes, fixtures, fitting, appliances and other particulars of sale. Loose furniture and planters are not included. Extent of the floor finishes may vary. External space and landscaping indicative only. Refer to level plans for further information.

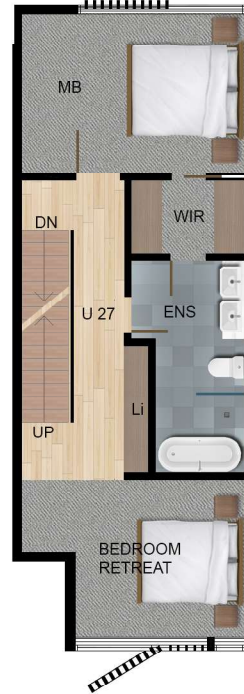




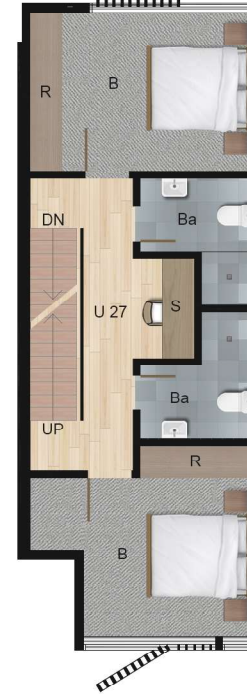
GARAGE



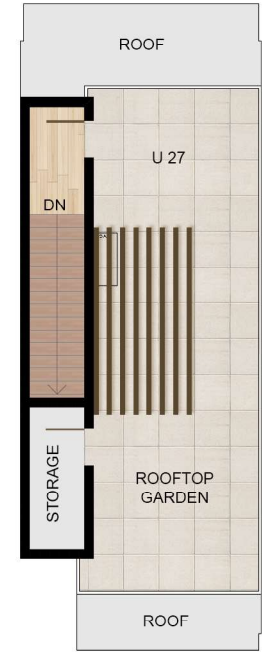
GROUND FLOOR - OPTION



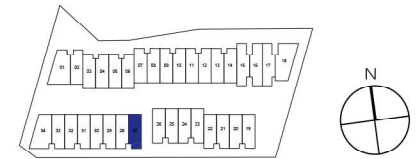
FIRST FLOOR - OPTION



SECOND FLOOR - OPTION



ROOFTOP GARDEN



# DONCASTER GARDENS

DWELLING  
**27**



4



3.5



2

INTERNAL  
AREA

256.05 m<sup>2</sup>

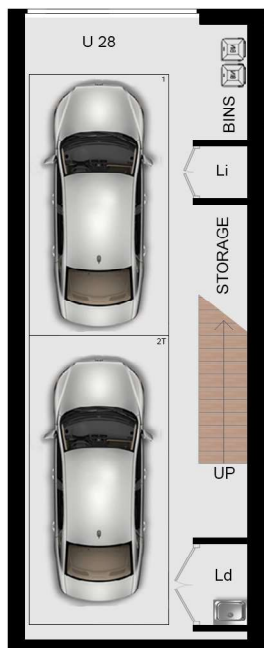
EXTERNAL  
AREA

60.16 m<sup>2</sup>

TOTAL  
AREA

316.21 m<sup>2</sup>

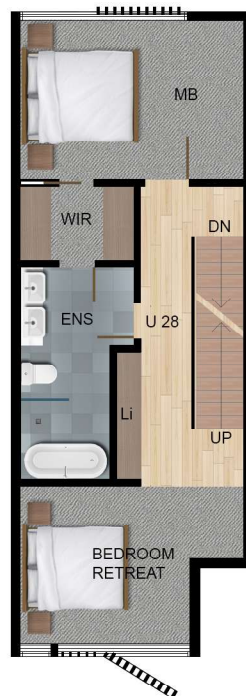
DISCLAIMER: This plans are intended as a guide only. Window size and location may vary. Refer to level plans for window locations. Refer to contract for options and chattels inclusions. The dimensions and areas are approximate only and may not accurately represent the actual dimensions and areas of the apartments or the spaces within them and are subject to change without notice. In addition, locations of utilities may vary during construction and fittings and fixtures on these plan are for illustrative purposes only. The areas are generally measured in accordance with the Property Council of Australia method of measurement. Prospective purchasers must rely on their own enquiries and should refer to the contract of sales and its schedules for all matters to be included in the purchase price of the apartment, including plans, finishes, fixtures, fitting, appliances and other particulars of sale. Loose furniture and planters are not included. Extent of the floor finishes may vary. External space and landscaping indicative only. Refer to level plans for further information.



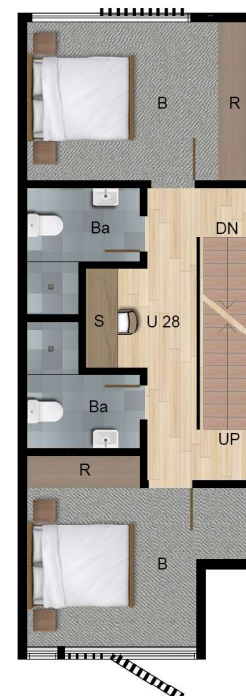
GARAGE



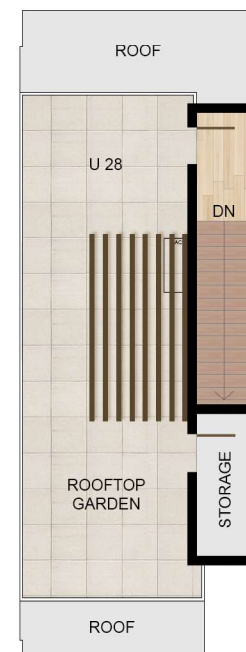
GROUND FLOOR - OPTION



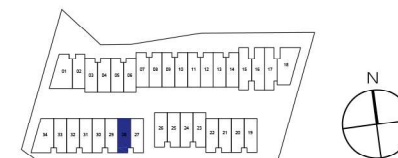
FIRST FLOOR - OPTION



SECOND FLOOR - OPTION



ROOFTOP GARDEN



# DONCASTER GARDENS

DWELLING  
**28**



4



3.5



2

INTERNAL  
AREA

222.37 m<sup>2</sup>

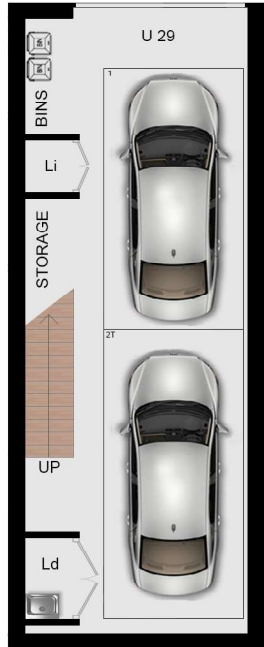
EXTERNAL  
AREA

60.22 m<sup>2</sup>

TOTAL  
AREA

282.59 m<sup>2</sup>

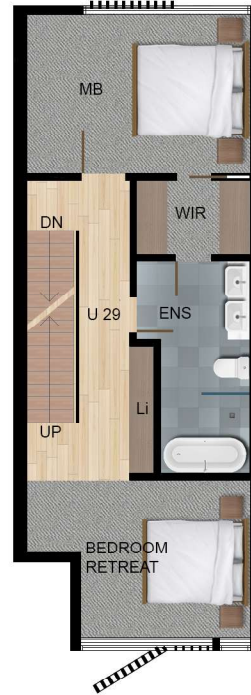
DISCLAIMER: This plans are intended as a guide only. Window size and location may vary. Refer to level plans for window locations. Refer to contract for options and chattels inclusions. The dimensions and areas are approximate only and may not accurately represent the actual dimensions and areas of the apartments or the spaces within them and are subject to change without notice. In addition, locations of utilities may vary during construction and fittings and fixtures on these plan are for illustrative purposes only. The areas are generally measured in accordance with the Property Council of Australia method of measurement. Prospective purchasers must rely on their own enquiries and should refer to the contract of sales and its schedules for all matters to be included in the purchase price of the apartment, including plans, finishes, fixtures, fitting, appliances and other particulars of sale. Loose furniture and planters are not included. Extent of the floor finishes may vary. External space and landscaping indicative only. Refer to level plans for further information.



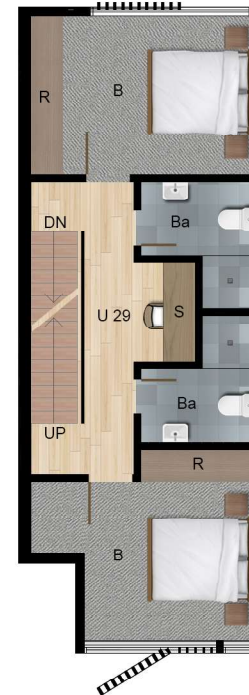
GARAGE



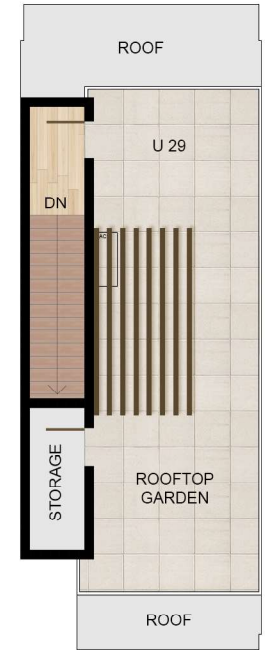
GROUND FLOOR - OPTION



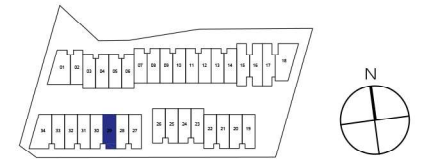
FIRST FLOOR - OPTION



SECOND FLOOR - OPTION



ROOFTOP GARDEN



# DONCASTER GARDENS

DWELLING  
29



4



3.5



2

INTERNAL  
AREA

222.37 m2

EXTERNAL  
AREA

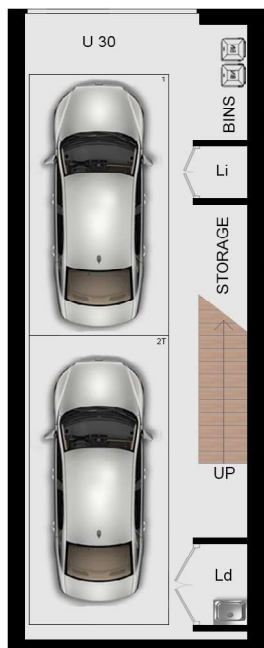
60.22 m2

TOTAL  
AREA

282.59 m2

DISCLAIMER: This plans are intended as a guide only. Window size and location may vary. Refer to level plans for window locations. Refer to contract for options and chattels inclusions. The dimensions and areas are approximate only and may not accurately represent the actual dimensions and areas of the apartments or the spaces within them and are subject to change without notice. In addition, locations of utilities may vary during construction and fittings and fixtures on these plan are for illustrative purposes only. The areas are generally measured in accordance with the Property Council of Australia method of measurement. Prospective purchasers must rely on their own enquiries and should refer to the contract of sales and its schedules for all matters to be included in the purchase price of the apartment, including plans, finishes, fixtures, fitting, appliances and other particulars of sale. Loose furniture and planters are not included. Extent of the floor finishes may vary. External space and landscaping indicative only. Refer to level plans for further information.

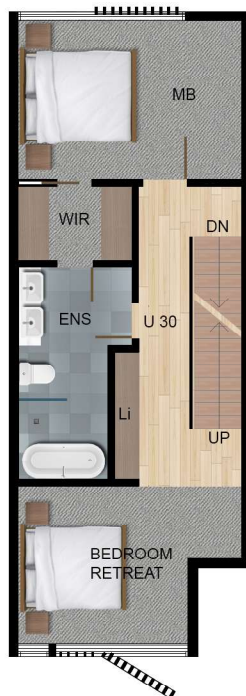




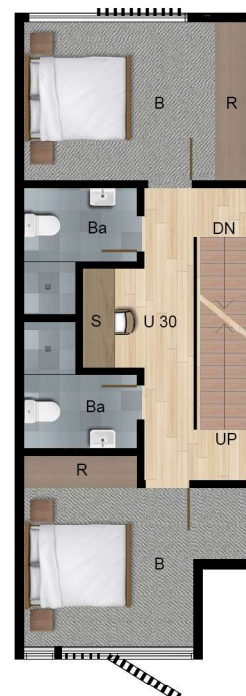
GARAGE



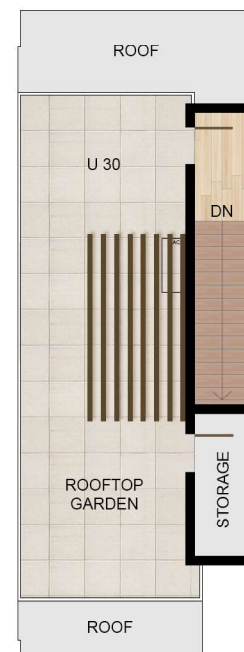
GROUND FLOOR - OPTION



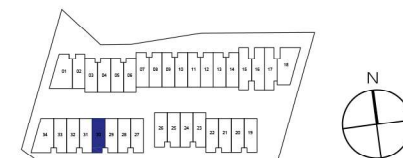
FIRST FLOOR - OPTION



SECOND FLOOR - OPTION



ROOFTOP GARDEN



# DONCASTER GARDENS

DWELLING  
**30**



4



3.5



2

INTERNAL  
AREA

222.37 m2

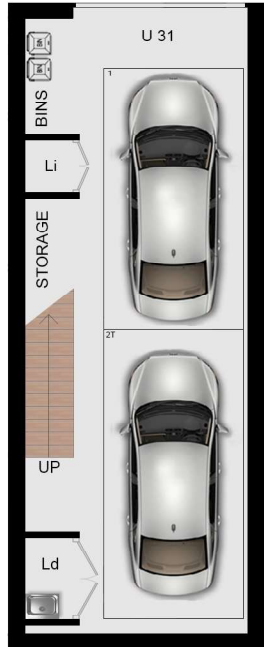
EXTERNAL  
AREA

60.22 m2

TOTAL  
AREA

282.59 m2

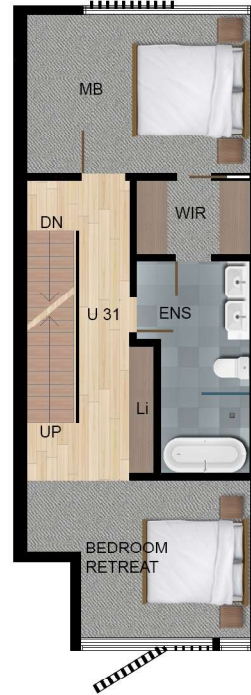
DISCLAIMER: This plans are intended as a guide only. Window size and location may vary. Refer to level plans for window locations. Refer to contract for options and chattels inclusions. The dimensions and areas are approximate only and may not accurately represent the actual dimensions and areas of the apartments or the spaces within them and are subject to change without notice. In addition, locations of utilities may vary during construction and fittings and fixtures on these plan are for illustrative purposes only. The areas are generally measured in accordance with the Property Council of Australia method of measurement. Prospective purchasers must rely on their own enquiries and should refer to the contract of sales and its schedules for all matters to be included in the purchase price of the apartment, including plans, finishes, fixtures, fitting, appliances and other particulars of sale. Loose furniture and planters are not included. Extent of the floor finishes may vary. External space and landscaping indicative only. Refer to level plans for further information.



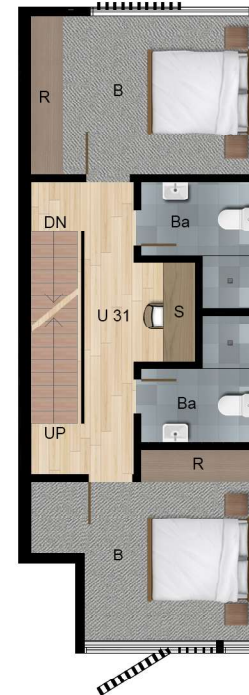
GARAGE



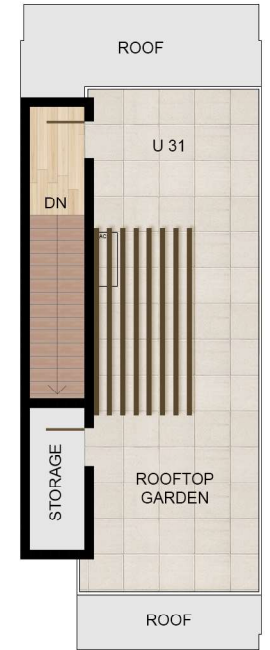
GROUND FLOOR - OPTION



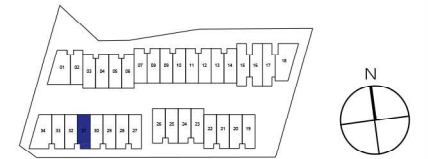
FIRST FLOOR - OPTION



SECOND FLOOR - OPTION



ROOFTOP GARDEN



# DONCASTER GARDENS

DWELLING  
**31**



4



3.5



2

INTERNAL  
AREA

222.37 m2

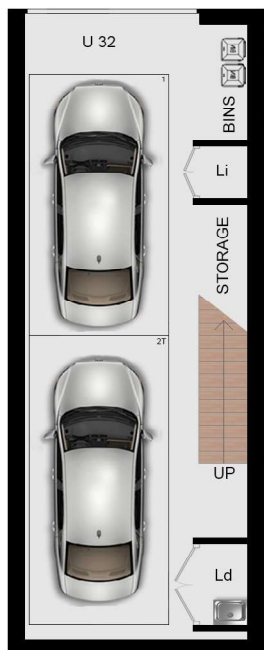
EXTERNAL  
AREA

60.22 m2

TOTAL  
AREA

282.59 m2

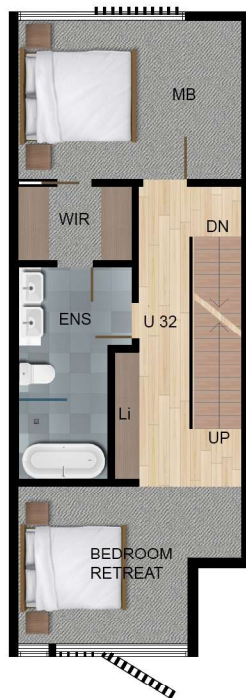
DISCLAIMER: This plans are intended as a guide only. Window size and location may vary. Refer to level plans for window locations. Refer to contract for options and chattels inclusions. The dimensions and areas are approximate only and may not accurately represent the actual dimensions and areas of the apartments or the spaces within them and are subject to change without notice. In addition, locations of utilities may vary during construction and fittings and fixtures on these plan are for illustrative purposes only. The areas are generally measured in accordance with the Property Council of Australia method of measurement. Prospective purchasers must rely on their own enquiries and should refer to the contract of sales and its schedules for all matters to be included in the purchase price of the apartment, including plans, finishes, fixtures, fitting, appliances and other particulars of sale. Loose furniture and planters are not included. Extent of the floor finishes may vary. External space and landscaping indicative only. Refer to level plans for further information.



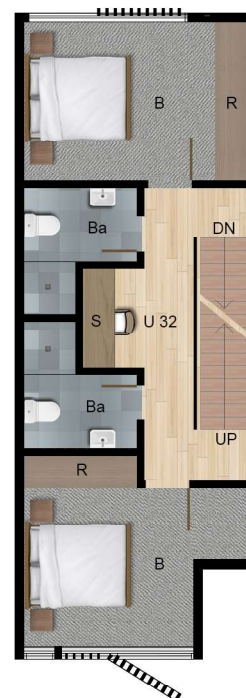
GARAGE



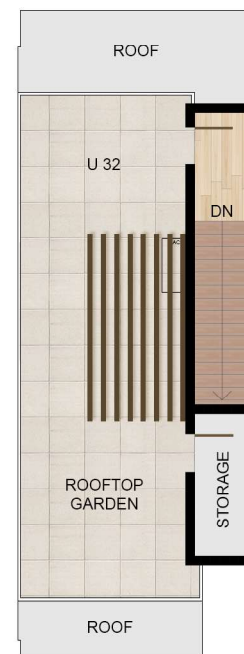
GROUND FLOOR - OPTION



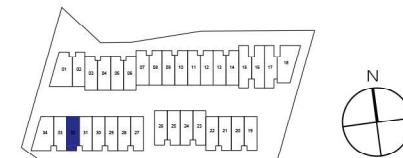
FIRST FLOOR - OPTION



SECOND FLOOR - OPTION



ROOFTOP GARDEN



# DONCASTER GARDENS

DWELLING  
**32**



4



3.5



2

INTERNAL  
AREA

222.37 m2

EXTERNAL  
AREA

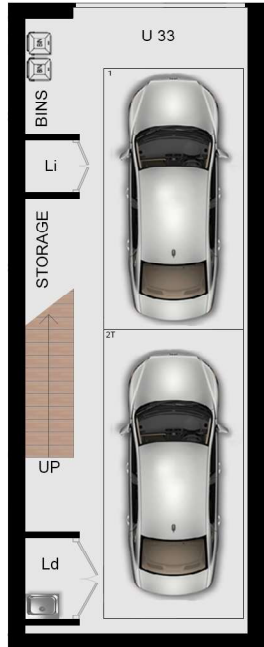
60.22 m2

TOTAL  
AREA

282.59 m2

DISCLAIMER: This plans are intended as a guide only. Window size and location may vary. Refer to level plans for window locations. Refer to contract for options and chattels inclusions. The dimensions and areas are approximate only and may not accurately represent the actual dimensions and areas of the apartments or the spaces within them and are subject to change without notice. In addition, locations of utilities may vary during construction and fittings and fixtures on these plan are for illustrative purposes only. The areas are generally measured in accordance with the Property Council of Australia method of measurement. Prospective purchasers must rely on their own enquiries and should refer to the contract of sales and its schedules for all matters to be included in the purchase price of the apartment, including plans, finishes, fixtures, fitting, appliances and other particulars of sale. Loose furniture and planters are not included. Extent of the floor finishes may vary. External space and landscaping indicative only. Refer to level plans for further information.

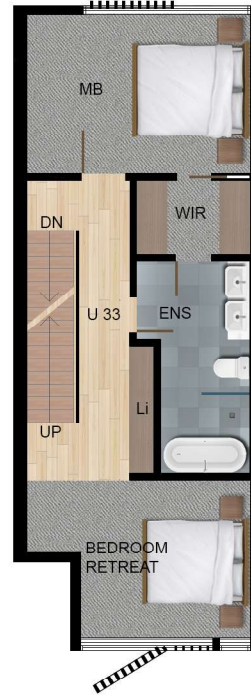




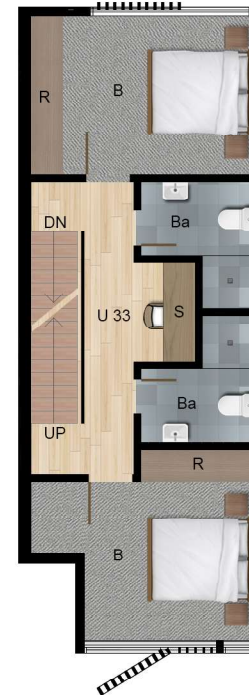
GARAGE



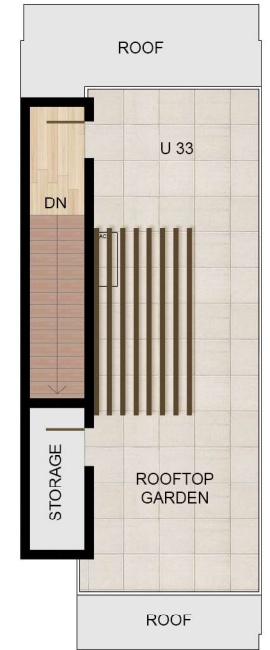
GROUND FLOOR - OPTION



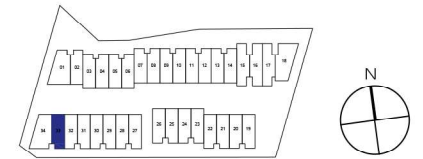
FIRST FLOOR - OPTION



SECOND FLOOR - OPTION



ROOFTOP GARDEN



# DONCASTER GARDENS

DWELLING  
**33**



4



3.5



2

INTERNAL  
AREA

222.37 m2

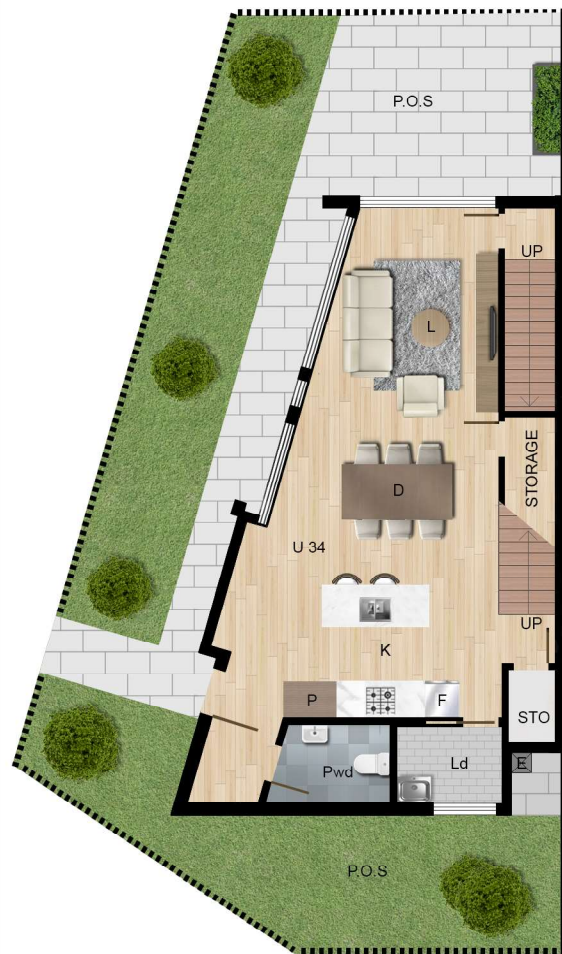
EXTERNAL  
AREA

60.22 m2

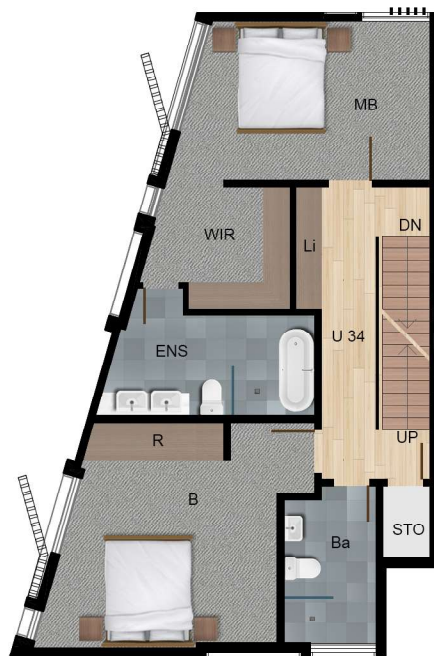
TOTAL  
AREA

282.59 m2

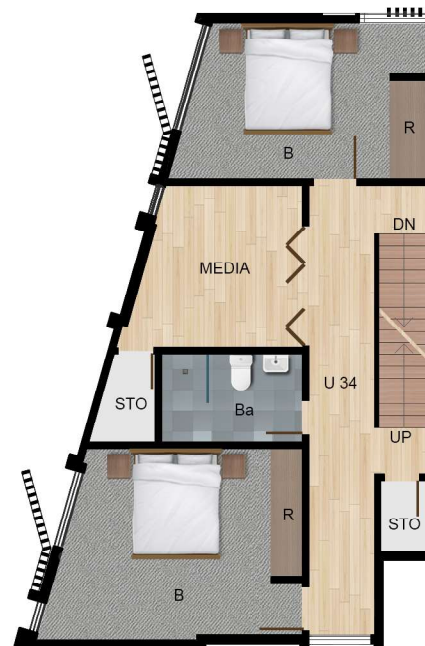
DISCLAIMER: This plans are intended as a guide only. Window size and location may vary. Refer to level plans for window locations. Refer to contract for options and chattels inclusions. The dimensions and areas are approximate only and may not accurately represent the actual dimensions and areas of the apartments or the spaces within them and are subject to change without notice. In addition, locations of utilities may vary during construction and fittings and fixtures on these plan are for illustrative purposes only. The areas are generally measured in accordance with the Property Council of Australia method of measurement. Prospective purchasers must rely on their own enquiries and should refer to the contract of sales and its schedules for all matters to be included in the purchase price of the apartment, including plans, finishes, fixtures, fitting, appliances and other particulars of sale. Loose furniture and planters are not included. Extent of the floor finishes may vary. External space and landscaping indicative only. Refer to level plans for further information.



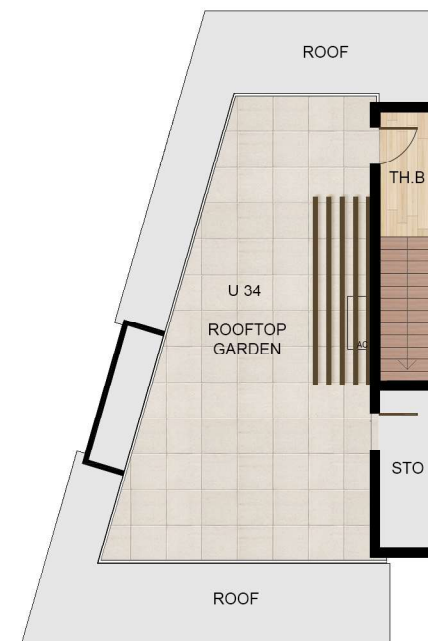
GROUND FLOOR - OPTION



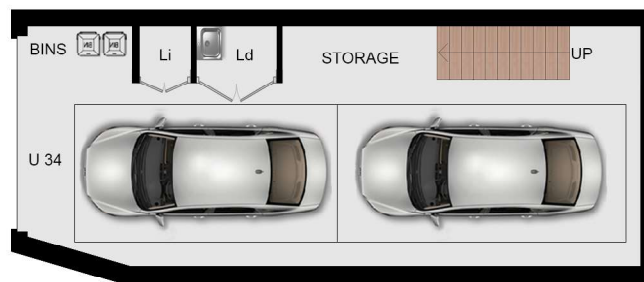
FIRST FLOOR - OPTION



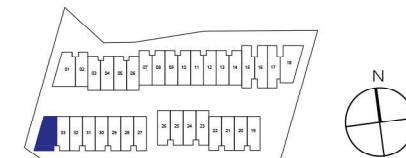
SECOND FLOOR - OPTION



ROOFTOP GARDEN - OPTION



GARAGE



# DONCASTER GARDENS

DWELLING  
**34**



4



3.5



2

INTERNAL  
AREA

292.55 m<sup>2</sup>

EXTERNAL  
AREA

114.74 m<sup>2</sup>

TOTAL  
AREA

407.29 m<sup>2</sup>

DISCLAIMER: This plans are intended as a guide only. Window size and location may vary. Refer to level plans for window locations. Refer to contract for options and chattels inclusions. The dimensions and areas are approximate only and may not accurately represent the actual dimensions and areas of the apartments or the spaces within them and are subject to change without notice. In addition, locations of utilities may vary during construction and fittings and fixtures on these plan are for illustrative purposes only. The areas are generally measured in accordance with the Property Council of Australia method of measurement. Prospective purchasers must rely on their own enquiries and should refer to the contract of sales and its schedules for all matters to be included in the purchase price of the apartment, including plans, finishes, fixtures, fitting, appliances and other particulars of sale. Loose furniture and planters are not included. Extent of the floor finishes may vary. External space and landscaping indicative only. Refer to level plans for further information.

# **DONCASTER**

---

# **G A R D E N S**

**142-146 Andersons Creek Road  
Doncaster East VIC 3109**